



Wildfire Insights and Support for Electric (WISE) Utilities

A Technical Assistance Program

Informational Webinar

August 5, 2025



PNNL is operated by Battelle for the U.S. Department of Energy

PNNL-SA-214869



**WILDFIRE RISK
& RESILIENCE**
@PNNL

Housekeeping

1. **This webinar is being recorded.** All participants are in listen-only mode until the Q&A.
2. The recording of the webinar will be made available on the [project webpage](#).
3. **Type your questions in the chat** and the project team will address them directly in the chat or during Q&A at the end of the presentation. You are also welcome to **ask your question during the Q&A**.
4. Tell us your organization and location (City, State) in the chat.

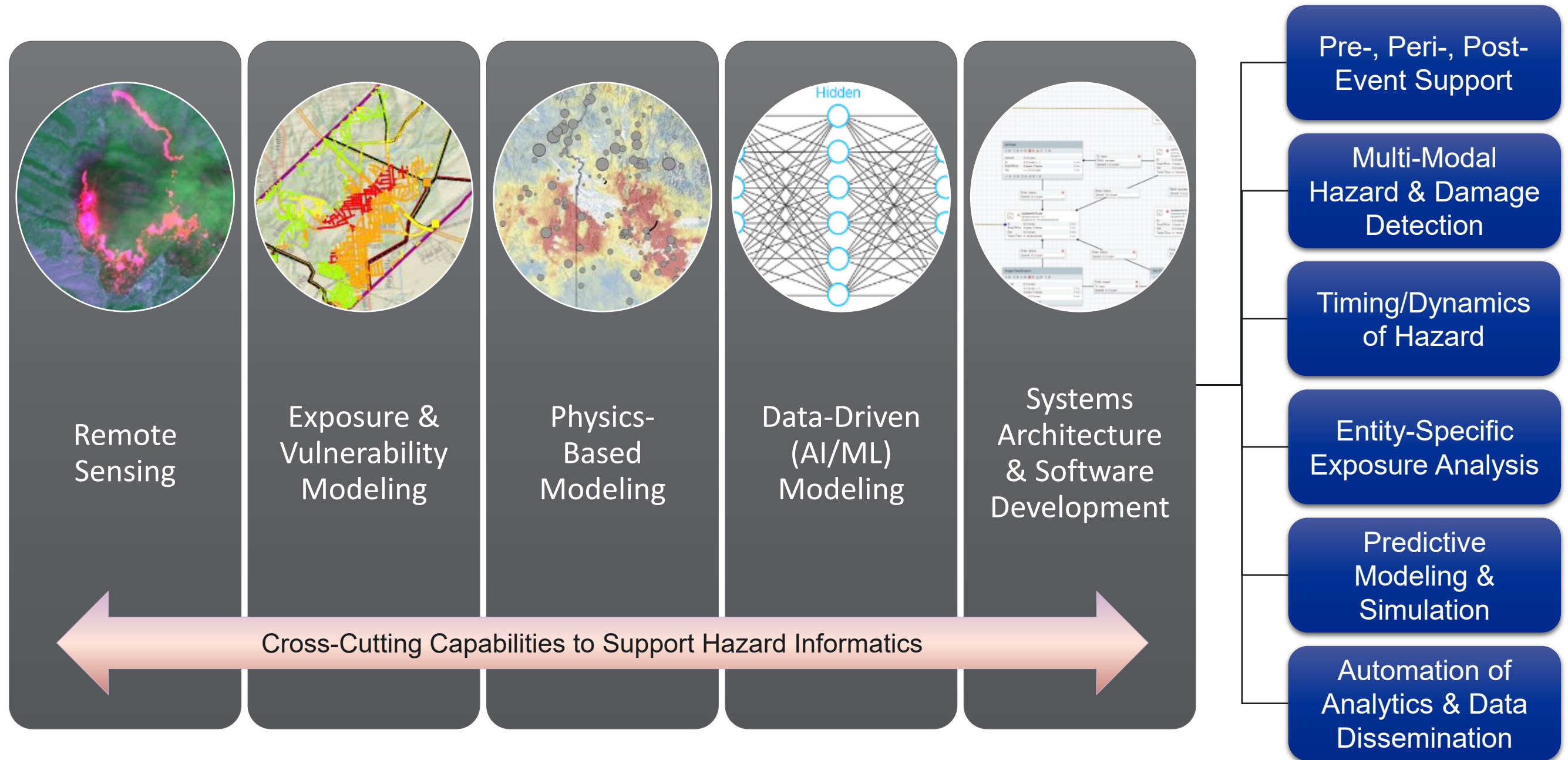
Webinar Agenda

Agenda Item	Time
Welcome and Housekeeping	5 minutes
PNNL's Expertise and Role	10 minutes
Technical Assistance Overview and Application Process	15 minutes
Questions and Answers	25 minutes
Closeout	5 minutes

PNNL's Energy and Environment Mission Delivers Innovations for our Energy Future



Multi-Disciplinary Approach to Hazard Informatics



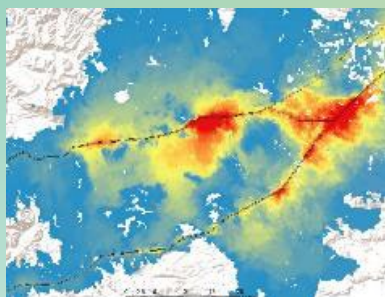
Triple-Line Defense for Wildfire Resiliency

PREVENTION & MITIGATION

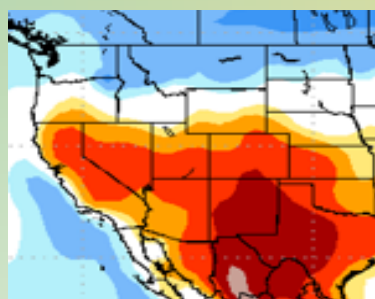
RESPONSE

RECOVERY & PREPAREDNESS

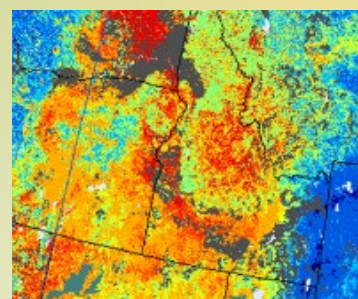
Pre-Season Fire Risk



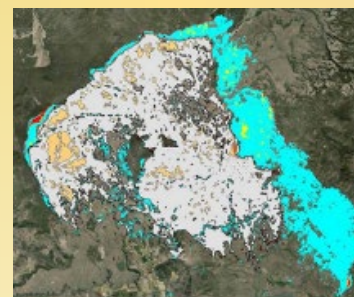
Forecasted Fire Risk



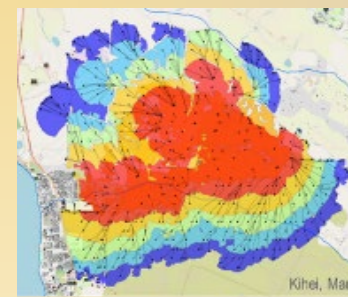
Current Fire Risk



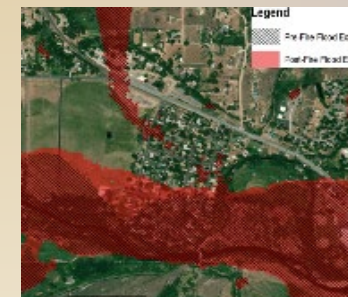
Active Event Monitoring



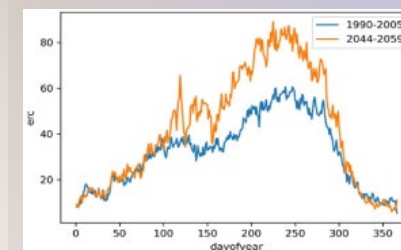
Forecasted Fire Spread



Post-Event



Long-Term Future Risk





Vegetation Management



Infrastructure Hardening



Community Resiliency



Consequence Analysis



Planning, Preparedness, Monitoring, & Policy Actions



Planning, Preparedness, Monitoring, & Policy Actions



Consequence Analysis



Vegetation Management



Community Resiliency



Infrastructure Hardening



Monitoring, & Policy Actions




EPSS PPS




Infrastructure & Site Operations




Consequence Analysis




Situational Awareness



Resourcing & Response



Infrastructure & Site Operations



EPSS/PPS



Resourcing & Response



Community Protection



Evacuation



Infrastructure & Site Operations



Scenario Analysis



Community Protection



Infrastructure Protection



Flood Risk



Landslide Risk



Recovery



Monitoring



Long-Term Planning & Mitigation



Policy Development



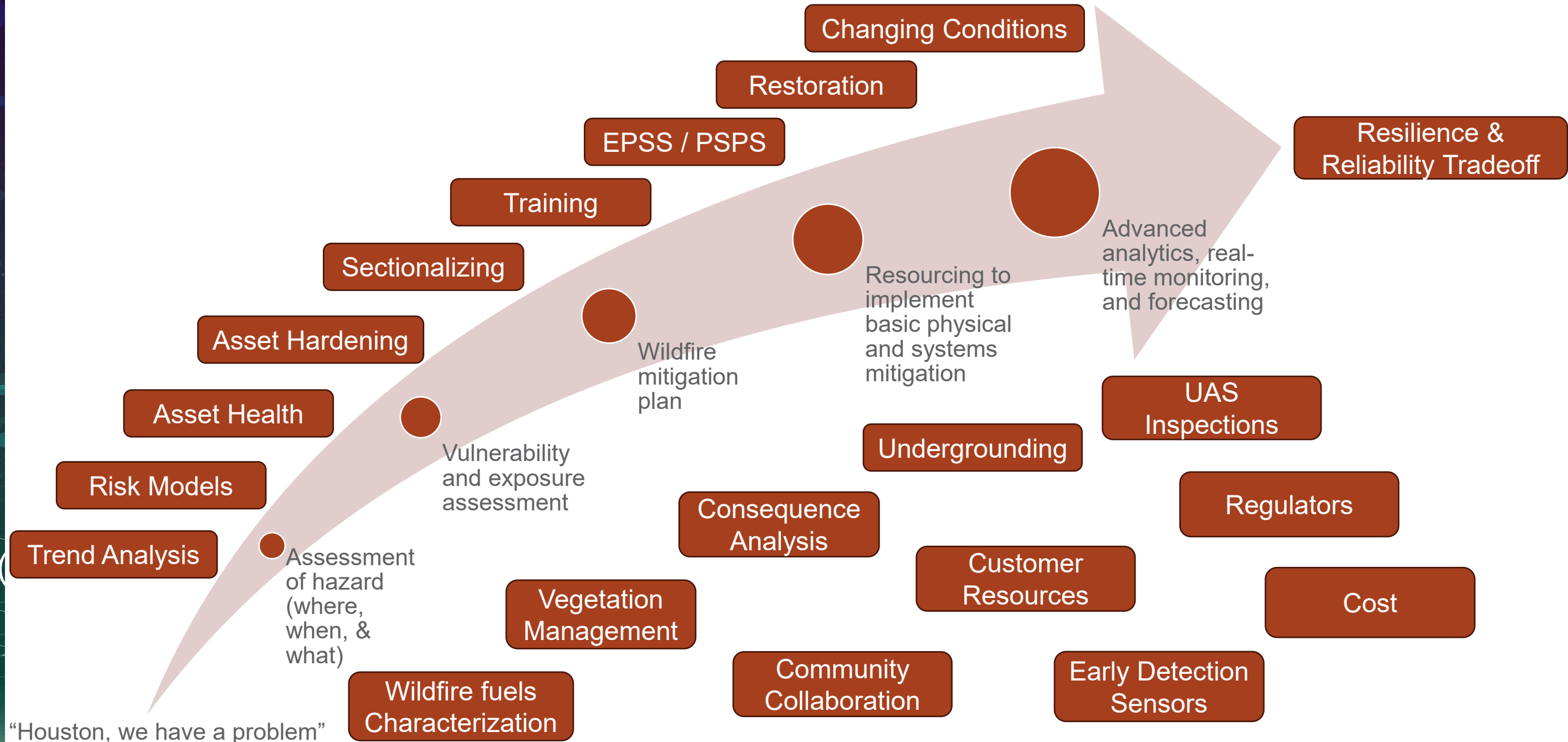
Strategic Investments

Wildfire Risk and Resilience Activities

- Legislative & industry trends
- Risk metrics & case studies
- Wildfire resiliency framework development towards industry standards
- Technical advisory committee
- Grid resilience assessments
- Wildfire hazard prevention through technologies
- Detection of emerging risk
- Situational awareness tools
- Strategic fuel treatment for risk reduction
- Transmission asset outage probabilities
- Dynamic contingency analysis
- Wildfire mitigation plan database



Wildfire Risk Mitigation Journey



Technical Assistance Overview

- Department of Energy's Grid Deployment Office is funding a **multi-year technical assistance** effort for electric utilities to strengthen their wildfire risk management, preparedness and resilience.
- The program may run **through 2028** subject to funding availability.
- The program is **administered by PNNL** and targets electric cooperatives, public utility districts, and Tribal, municipal and investor-owned utilities.
- Technical assistance will be **delivered by consultants** matched through the application-selection process across multiple phases.



Phase 1 Pilot Technical Assistance

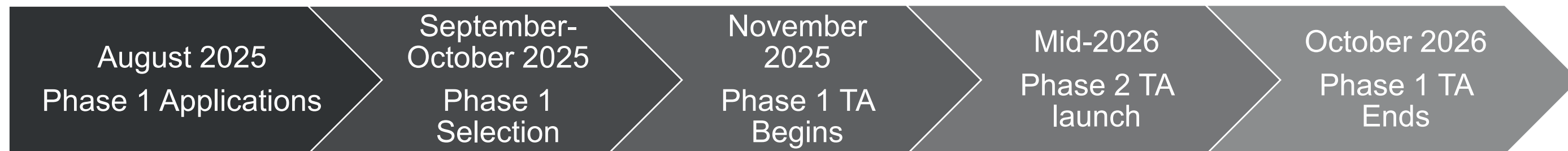
Overview

- Provides technical support to electric utilities who are exposed to existing or emerging wildfire risk
- Targets 6-10 utilities
- Delivered with a set budget for expedited technical assistance delivery over 12 months
- Aligns consultants' capabilities with utilities' technical needs
- Oversight and quality assurance provided by PNNL

Expected Outcome

- Expand understanding of utilities' wildfire risk focus areas and opportunities with greatest need.
- Inform future technical assistance structure (cohorts, geographical groupings, other.) by lessons from Phase 1 Pilot.

Timeline



Formats and Example Topics

Assistance Formats

- ☒ Capacity Building
- ☒ Workshops
- ☒ Webinars, presentations

- ☒ Development of resources, plans
- ☒ Data Analysis
- ☒ Modeling

Example Technical Areas

- Developing technical material to support effective wildfire mitigation plans.
- Supporting EPSS and PSPS planning and operational risk assessments.
- Providing wildfire mapping and fuelscape analyses.
- Analyzing load or customers for risk factors in disrupted energy supply.
- Risk evaluation to susceptible high-consequence infrastructure, communities, or natural resources.
- Developing regional/sub-regional landscape analysis.
- Assisting with post-wildfire recovery planning activities.
- Assisting in developing resilient rebuilding strategies for wildfire-affected areas.



Interest Form

1. Organization Requesting Assistance

Name & Location, Utility Type
Primary Point of Contact: Name, Title, Phone Number, Email

2. Challenge

Provide 1-2 paragraphs that discuss and respond to each of the following questions:

1. What is the wildfire risk related challenge or issue for which you are seeking support?
2. How does your organization currently address this challenge?
3. What is your role in addressing the wildfire risk issue/challenge?
4. Are there timing considerations for your request?

3. Desired Outcome

Explain what you want to accomplish through the requested technical assistance.

4. Wildfire Mitigation Plans

Does your utility currently have a Wildfire Mitigation Plan? Is there a requirement to have a plan?

[Submit your Interest Form Here](#)

Interest Form closes:
August 29, 2025



Interest Form Review and Selection

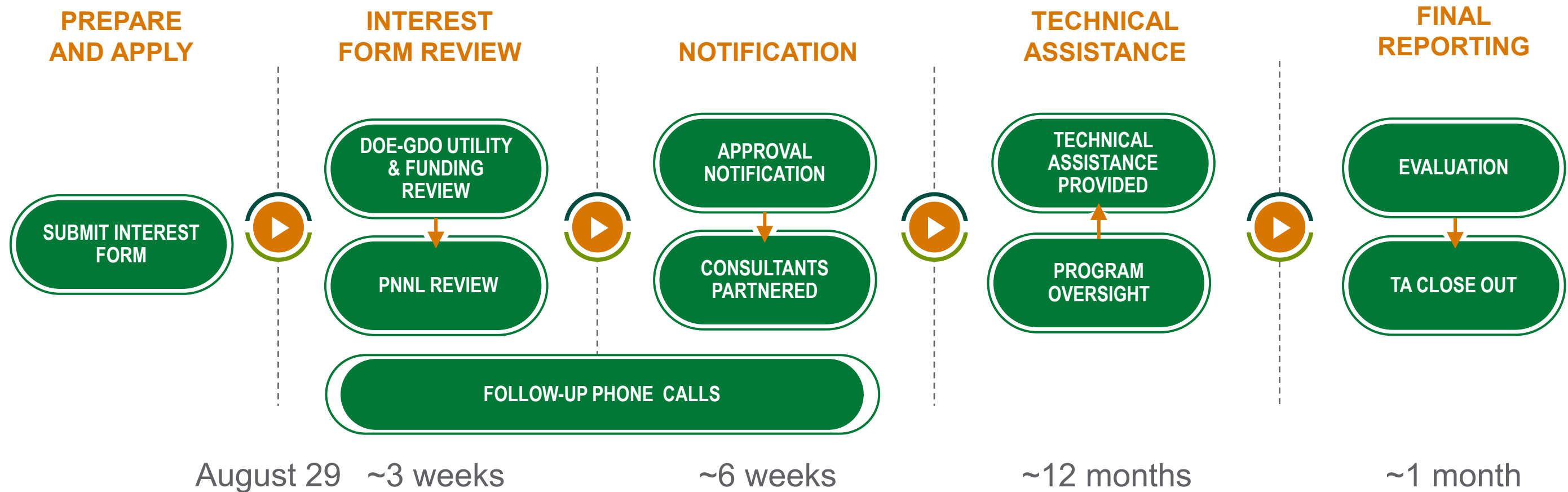
Program Policy Factors

1. All utilities are eligible, but we will recruit to represent a variety of utility types in varying geographies.
2. Projects may be selected to create a cohort of neighboring utilities that enable opportunities for larger geographic risk mitigation.
3. Preference may be given to utilities that haven't received DOE-GDO grants.
4. Ensure no one utility overwhelms the available funding.

- Utilities may receive technical assistance for up to 12 months depending on the scope of their request.
- All technical assistance should be matched in-kind and will vary in consultant costs (estimated range is \$50k-200k).

PNNL staff may reach out to applicants during the review process for any clarification or additional details.

Process



Interest Form closes:
August 29, 2025



Questions?

Ask your questions
or type them in the
chat.



**WILDFIRE RISK
& RESILIENCE**
@PNNL

WILDFIRE.PNNL.GOV

Contact Us

Find the webinar recording and project details on our website:
<https://www.pnnl.gov/projects/wildfire-risk-resilience/technical-assistance-and-support-utilities>

Email us with your questions and comments: wildfire@pnnl.gov

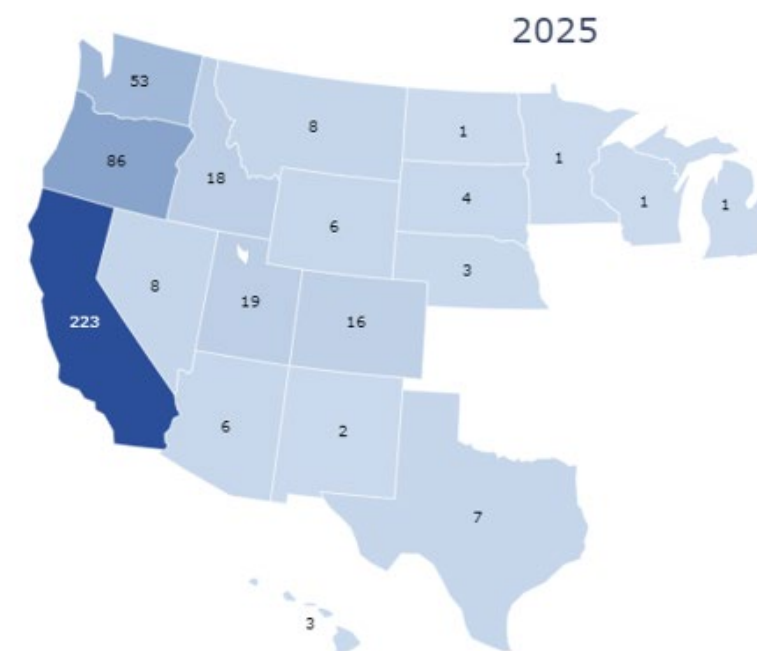
[Click here to apply for Technical Assistance](#)

Interest Form closes:
August 29, 2025



Utility Wildfire Mitigation Plan Database

- PNNL created a database of all known and discrete utility Wildfire Mitigation Plans (WMPs) from across the United States and Canada.
- The purpose of the database is to provide a single consolidated location for access to all WMPs, organized by utility, year, location, and other metadata.
- The database features short citable analyses, map filters, and search functions.



wildfire.pnnl.gov/mitigationplans

409

Number of Wildfire
Mitigation Plans

170

Number of Utilities
Represented

9

Years Represented
(2019-2028)

18

Number of States
Represented

Wildfire Risk: Changing Utility Business Models

- Providing credible, data-driven insights into the evolving financial and regulatory landscape facing utilities and highlight key trends such as the rise of self-insurance, expanded liability exposure, increasing insurance premiums and limitations, impacts on cost of capital, asset valuation changes and the redistribution of wildfire-related risk.

Webinar on Wildfire and Consequences for the Utility Business Model August 19 at 10 am PT

[Register >>](#)
[Landscape analysis >>](#)
[Project overview and Technical Advisory Committee >>](#)

Sponsor: DOE-GDO



WILDFIRE AND CONSEQUENCES FOR THE UTILITY BUSINESS MODEL

The risks and costs associated with wildfire mitigation, liability, and cost recovery have the potential to pose an existential threat to the utility business model. In addition to direct damages to utility equipment and property, wildfire also poses a significant financial concern in the form of third-party liability and damages from ignition, with cascading effects to business practices.

This webinar will summarize research by Pacific Northwest National Laboratory (PNNL) on key trends for wildfire-related risks to the utility business model, such as insurance cost and availability, credit ratings, and cost of capital for all types of electric utilities. The webinar will also survey and offer statistics on the range of methods and mechanisms that utilities are taking to mitigate potential wildfire risks, as well as legislation that state policymakers are increasingly adopting to clarify utility responsibilities.

We look forward to having you attend the event!

This work is part of Pacific Northwest National Laboratory's Wildfire Risk and Changing Utility Business Model's analysis. Wildfire risk is reshaping the utility business model in profound and increasingly visible ways. To better understand these shifts, the U.S. Department of Energy's Grid Deployment Office is supporting Pacific Northwest National Laboratory (PNNL) in providing credible, data-driven insights into the evolving financial and regulatory landscape facing utilities. This effort will highlight key trends such as the rise of self-insurance, expanded liability exposure, increasing insurance premiums and limitations, impacts on cost of capital, asset valuation changes (e.g., accelerated depreciation), and the redistribution of wildfire-related risk—whether through service suspensions, ratepayer impacts, or shifts to taxpayers and governments. The project is focused on documenting the business realities utilities face in a wildfire-prone environment—not on introducing or elevating new risks. More information is available at [Wildfire Risk and Changing Utility Business Models | PNNL](#).

Speakers:



DEVYN POWELL



JESS KINCAID



KERRY ABERNETHY-CANNELLA



DAN BOFF

TUESDAY, AUGUST 19, 2025
10:00–11:00 AM
(UTC-08:00) Pacific Time (US & Canada)



MICROSOFT TEAMS Need help?

- ▶ [Get started—register here](#)
- ▶ [Download the Analysis](#)
- ▶ Meeting ID: 273 595 918 857 7
- ▶ Passcode: DP234o4V



DIAL IN BY PHONE

- ▶ +1 509-408-1681, 35133215#
United States, Liberty Lake
- ▶ [Find a local number](#)
- ▶ Phone conference ID: 351 332 15#
- ▶ For organizers: [Meeting options](#)
[Reset dial-in PIN](#)