

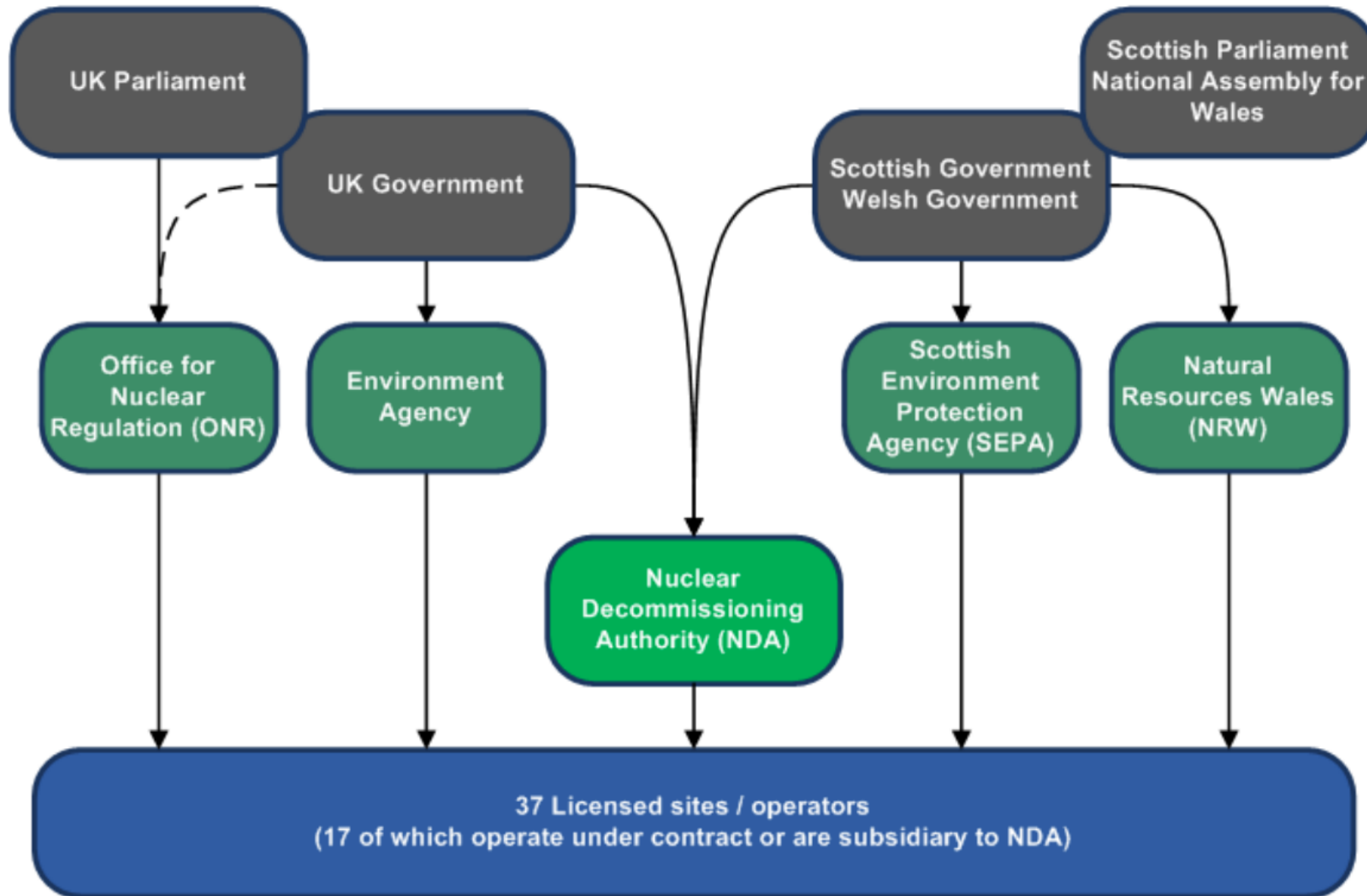
Environmental regulation of nuclear site clean-up

Malcolm Peters

Senior Nuclear Regulator and Nuclear Site
Remediation Project Lead

Environment Agency

Regulatory landscape for nuclear site clean-up



Context



EA 2025

CREATING A
BETTER PLACE



A NATION RESILIENT
TO CLIMATE CHANGE



HEALTHY AIR,
LAND AND WATER



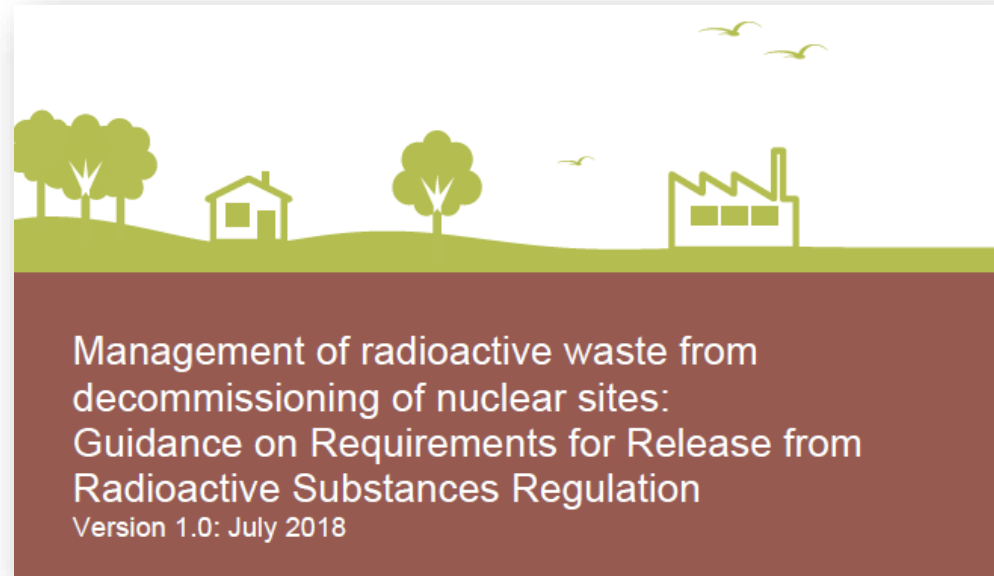
GREEN GROWTH AND
A SUSTAINABLE FUTURE

SUSTAINABLE
DEVELOPMENT GOALS



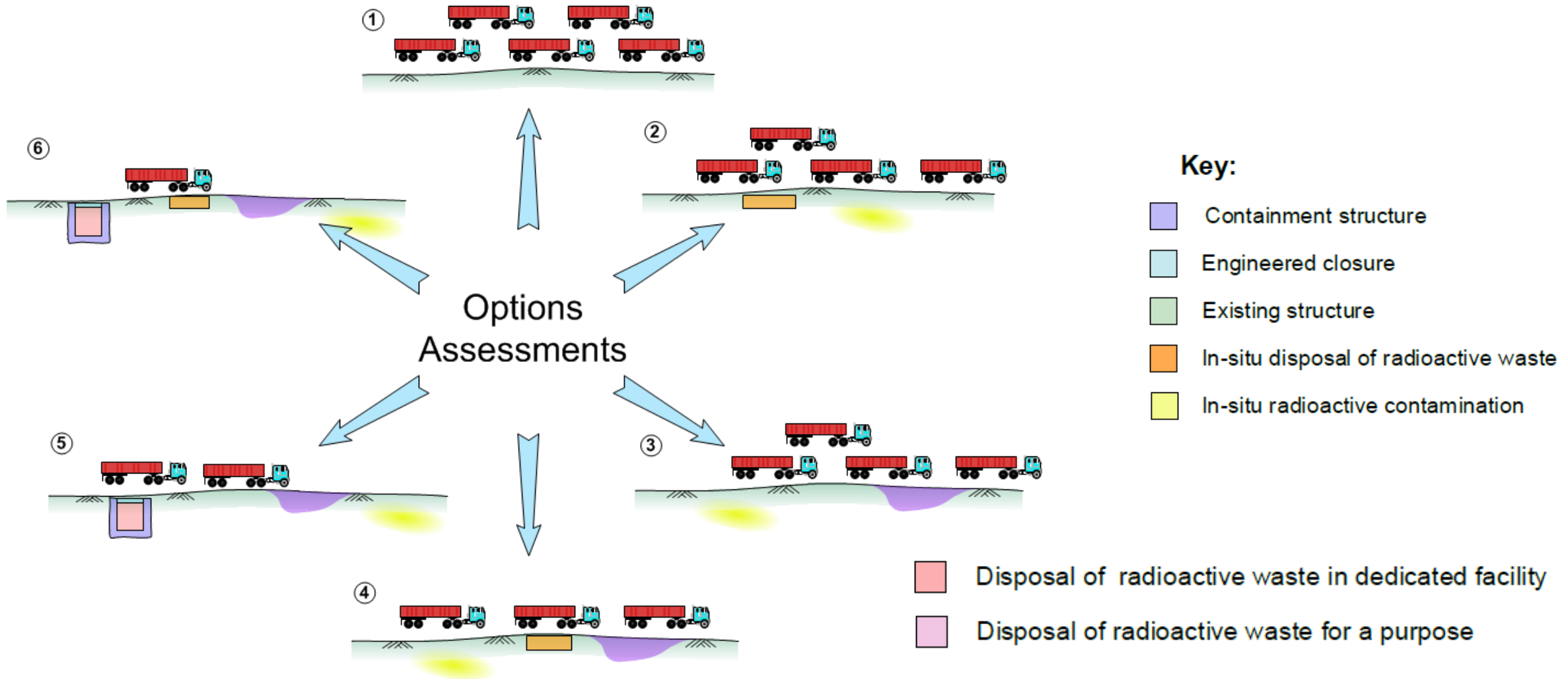
Setting expectations for achieving release from regulation

- Published joint environment agencies guidance ([GRR](#)) clarifying our expectation that operators should optimise decisions on how best to manage radioactive wastes



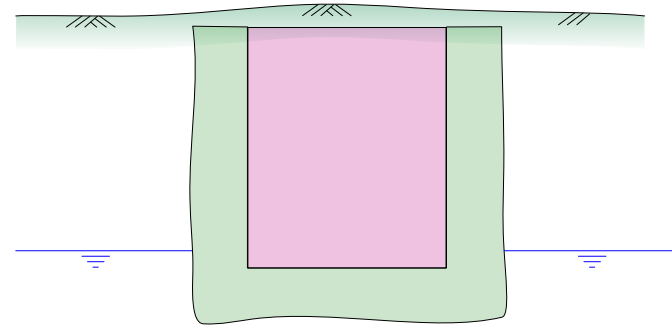
- Informed by industry trial – lead & learn approach
- Modified all nuclear permits in England & Wales

Optimisation of radioactive waste management

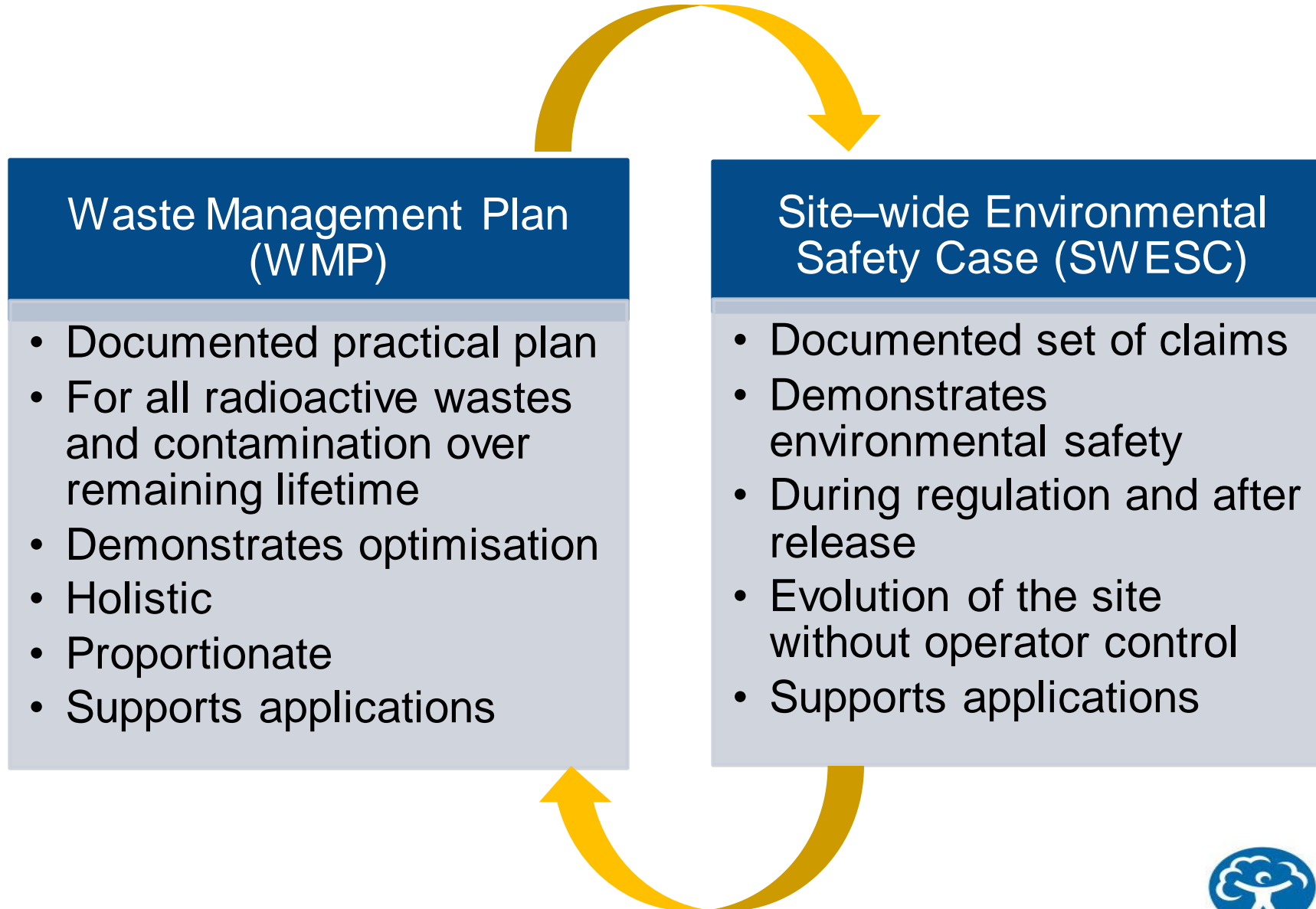


Integrated management of decommissioning arisings

- ➔ GRR encourages integrated approach to waste management
- ➔ It sets criteria for:
 - ➔ In situ disposal
 - ➔ Disposal for a purpose – similar to concept of ‘recovery’ in conventional waste legislation
- ➔ Recognise volumes of non-radioactive demolition material are significant
- ➔ Retention and re-use of materials on sites may offer a more sustainable route to ‘End States’



Two key deliverables for GRR



Implementation progress

- ➔ Working with stakeholders and industry:
 - ➔ Industry trial – worked in feedback from lead & learn
 - ➔ Public consultation on the draft guidance
 - ➔ Dedicated strategic and technical-level interactions on GRR – sharing learning and resolving issues
 - ➔ Developed industry-wide compliance timeline
 - ➔ Wider regular ‘touch points’ e.g. Site Decommissioning and Remediation – NDA Theme Overview Group, Nuclear Industry Liaison Group, Safety Directors Forum etc.

Implementation progress

➔ Successes and progress made:

- ➔ EA issued 'Proportionality note' – clear expectations across different sector areas
- ➔ GRR Training modules
- ➔ Developed Groundwater and Directive Waste guidance

➔ Ongoing work

- ➔ Climate change impacts and adaptation work
- ➔ Developing *Integrated Environment Assessments Working Group for Nuclear On-site Disposal*
- ➔ Building more specialist support e.g. groundwater specialist
- ➔ Working with industry group for sustainable reuse of materials

Challenges & changes

- ➔ Evolving legislation & policy
- ➔ Moving from an operational to a 'End State' focus – broad range of new issues
- ➔ Need multi-disciplinary teams of specialists
- ➔ We are looking to optimise across legal and regulatory regimes with different standards and approaches
- ➔ Maintain consistency of environmental outcomes across Industry (level playfield)
- ➔ Promoting sustainable outcomes with good stakeholder engagement

