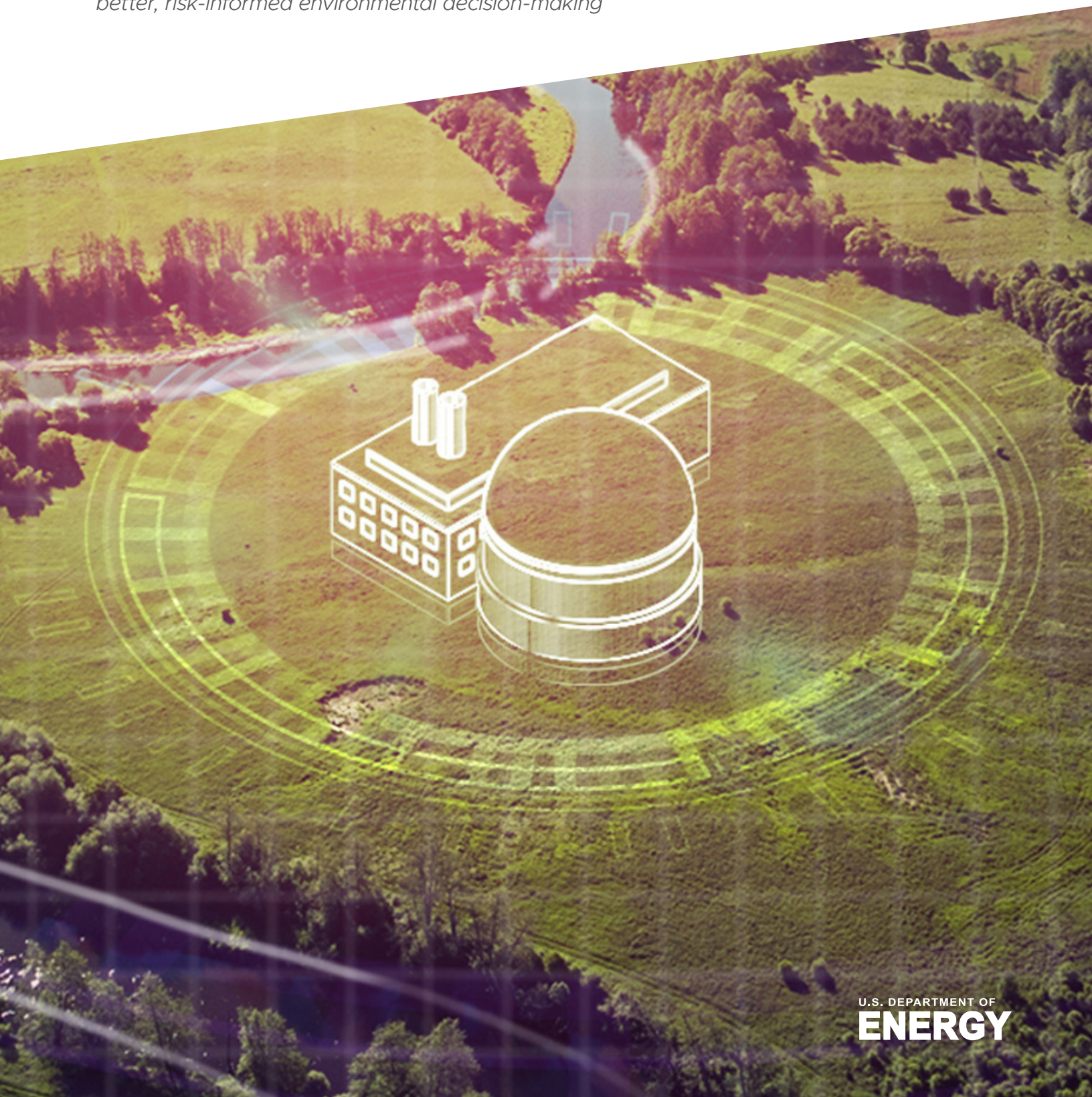


Integrated Approach to Environmental Assessments



*45 years of proven, data-backed analyses and tools for
better, risk-informed environmental decision-making*



U.S. DEPARTMENT OF
ENERGY



For over 45 years, Pacific Northwest National Laboratory (PNNL) has produced scientifically credible, trusted, and legally defensible analyses to meet federal, state, and local environmental regulations and guidelines. With over 60 environmental reviews to our credit, we have a long history supporting agencies, such as the Nuclear Regulatory Commission, the Department of Energy, Department of Defense, Bonneville Power Administration, and the National Nuclear Security Administration.

From climate change and changing baselines, to social science and environmental justice along with energy infrastructure siting, flooding potential, atmospheric dispersion, and contaminant fate and transport, our expertise crosscuts complex challenges. With a team of over 40 staff, our in-house expertise spans every technical specialty necessary to complete the most scientifically challenging or legally demanding assessment.

What We Do

We work interactively with clients and stakeholders to support complex environmental decision making, as well as the National Environmental Policy Act (NEPA) process using tools and techniques that rigorously analyze the trade-offs between costs, public risks, and stakeholder values. Our NEPA expertise includes the following areas:

- Environmental Impact Statements and Environmental Assessments
- Environmental justice assessments
- Technical resource assessments
- Categorical exclusions
- Project management and coordination
- Cumulative effects
- Endangered Species Act and Magnuson-Stevens Act consultation support
- Policy compliance/coordination (National Historical Preservation Act, Endangered Species, Clean Water, and Clean Air Acts)
- Maintaining administrative record
- Strategic stakeholder engagement and facilitation
- Fact witness testimony
- Contaminant-specific fate and transport modeling
- Comment response database
- Advanced ecosystem modeling
- Support for tribal consultations
- Valuation for fair, balanced, and equitable solutions to complex environmental and socioeconomic issues
- Effects of climate change, extreme weather and changing baselines



Efficient Solutions, Proven Experience

PNNL's expert team utilizes its proven expertise to deliver efficient solutions. We use the following approaches to:

Integrate Complex Assessments – We offer a multi-resource, interdisciplinary approach to assess complex environmental, economic, and social issues, with an experienced staff of subject matter experts to develop comprehensive assessments.

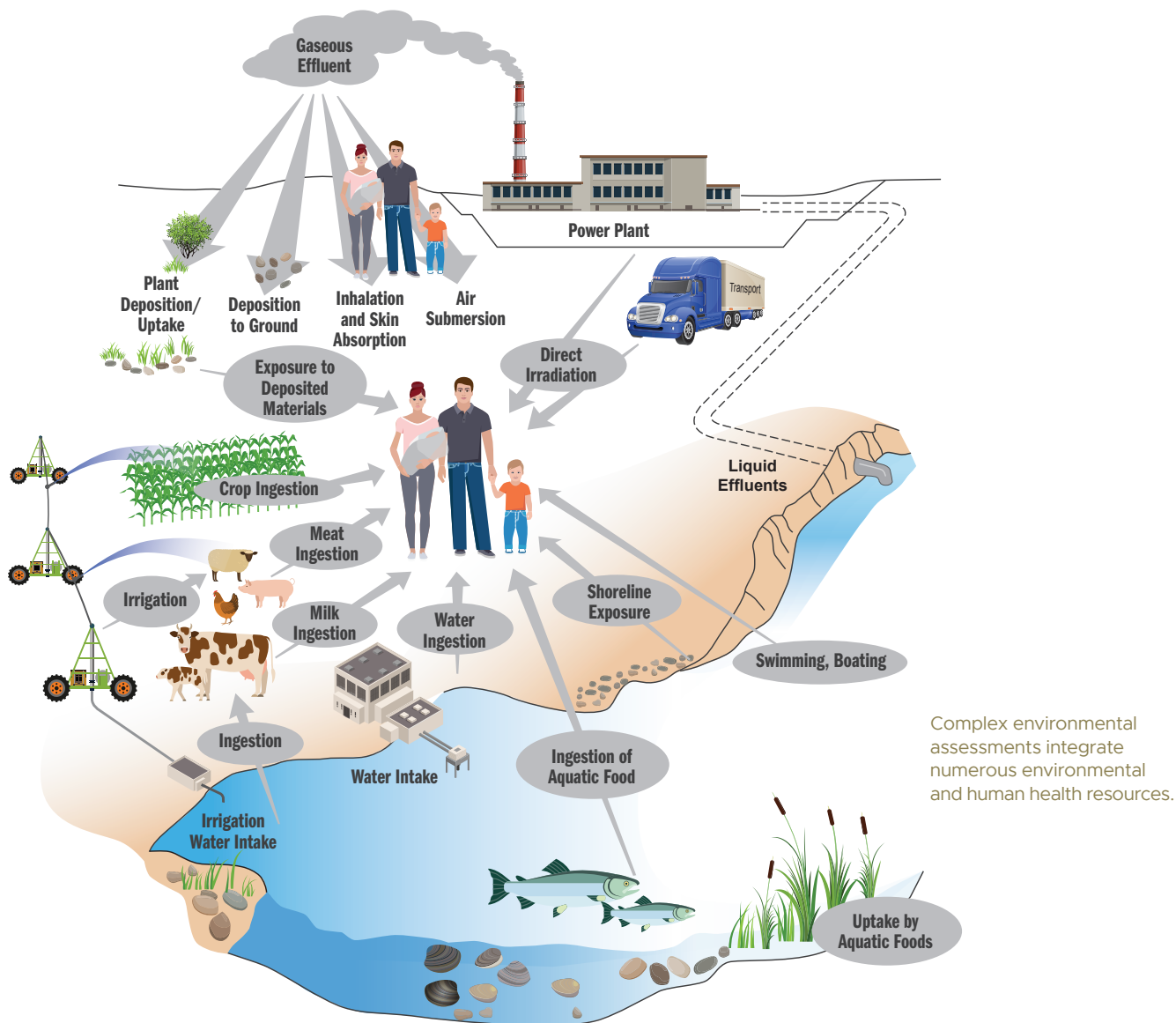
Address Climate Change – PNNL has been developing and applying innovative methods to inform environmental reviews, critical infrastructure protection assessments, and adaptive management of resources to encompass shifting baselines and aid in tradeoff analysis for complex decision-making.

Inform Environmental Policy – PNNL has partnered with agencies to develop risk-informed, performance-based approaches to better inform policy analysis. PNNL has experience in preparing guidance for federal

regulations and policies to help streamline review and analysis processes and to develop guidance for emerging issues and new technologies.

Facilitate Effective Stakeholder Engagement – PNNL supports state and federal agencies during regulatory decision-making processes with strategic engagement techniques, such as stakeholder analysis, interviews, soliciting input and values, engagement plans and event coordination, facilitation, and incorporating value into programs.

Enable Efficient Responses to Public Concerns – PNNL has developed web-based software solutions for analyzing, sorting, tracking, summarizing, and responding to public comments. This tool streamlines the labor-intensive process of accepting and resolving public feedback and integrates comments into projects and programs. The tool is scalable, accommodating large volumes of public feedback.



For More Information, Contact:

Tara O'Neil

Nuclear Regulatory Manager
Earth Systems Science Advisor
(541) 738-0362 | tara.oneil@pnnl.gov

Ann Miracle, PhD

Risk and Environmental Assessment
Group Leader
(509) 372-4327 | ann.miracle@pnnl.gov

Bruce McDowell

Senior Advisor
(509) 375-6668 | bruce.mcdowell@pnnl.gov

About PNNL

Pacific Northwest National Laboratory

draws on signature capabilities in chemistry, Earth sciences, and data analytics to advance scientific discovery and create solutions to the nation's toughest challenges in energy resiliency and national security. Founded in 1965, PNNL is operated by Battelle for the U.S. Department of Energy's Office of Science. DOE's Office of Science is the single largest supporter of basic research in the physical sciences in the United States and is working to address some of the most pressing challenges of our time.