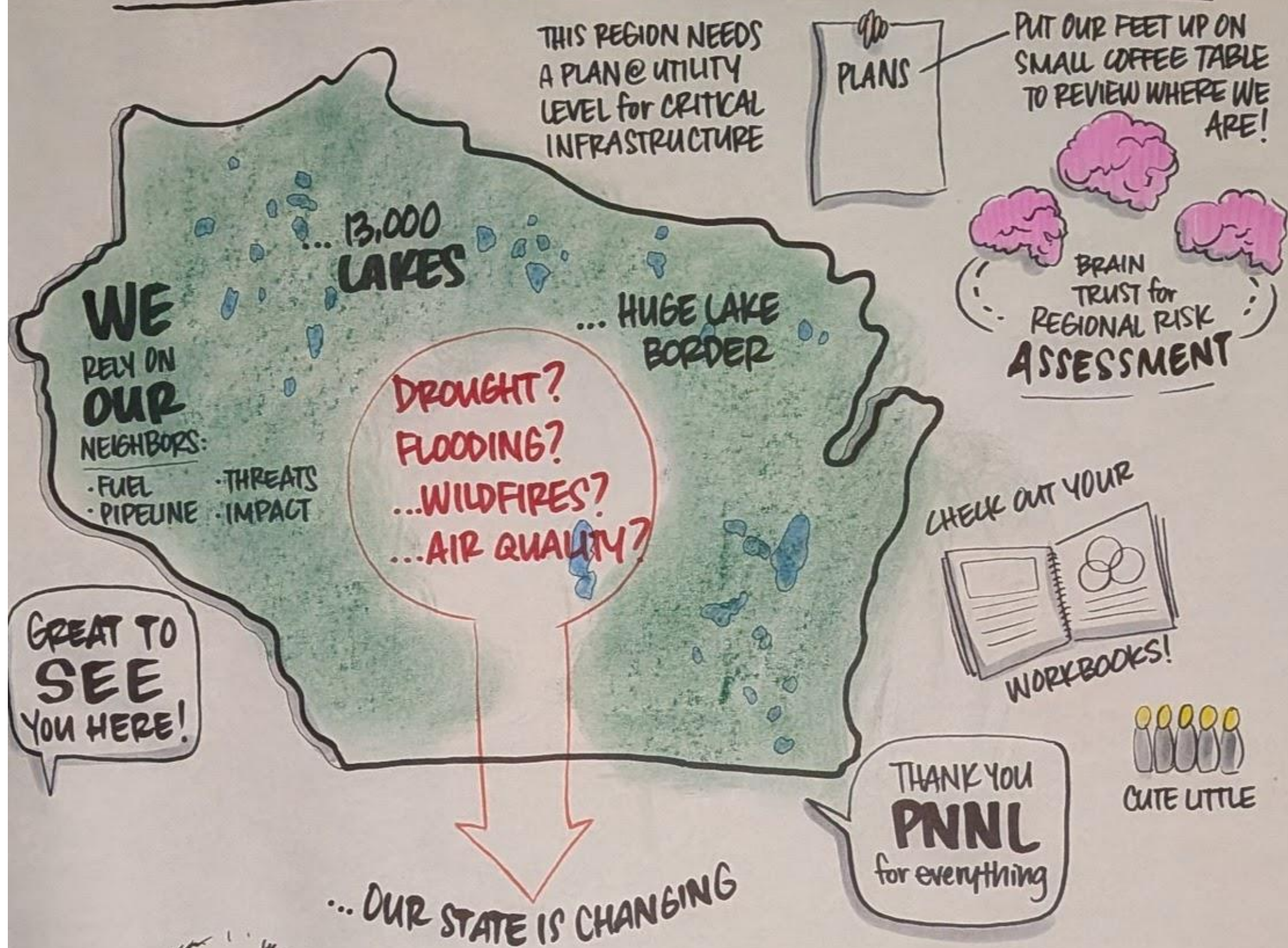
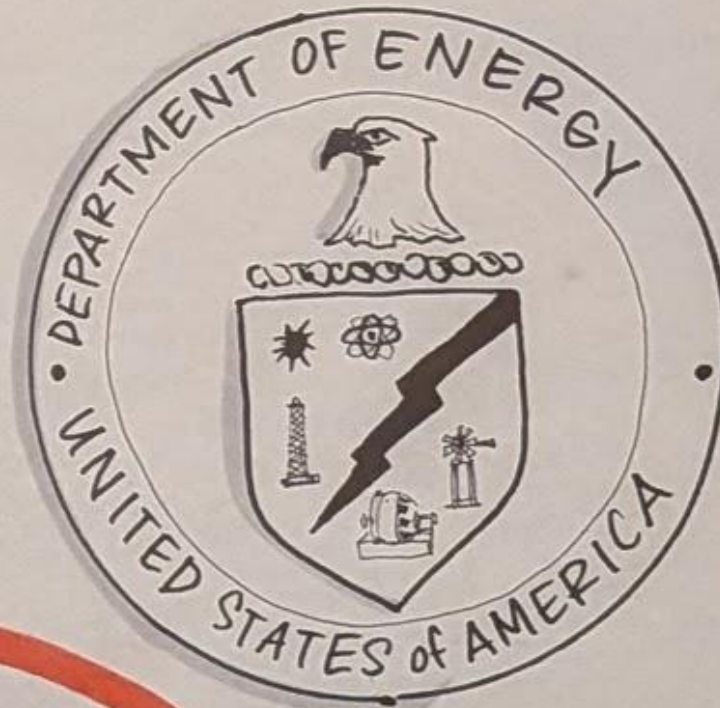


# Welcome & STATE HOST KEYNOTES



ADJUST  
HOW WE VIEW  
OUR STATE &  
NEIGHBORS

1 BLOCK from CAPITAL  
& FOSSILS IN THE FLOOR



PLANS XCEL HAS A LOT  
TO REVIEW TO  
HELP WITH OUR  
RESPONSE

PACIFIC  
NORTHWEST  
NATIONAL LABORATORY



SLIDES WORKBOOK EXPERTS  
TO DEVELOP YOUR  
UNIQUE PLAN

YOUR  
DOORSTEP  
TODAY  
OUR  
DOORSTEP  
TOMORROW

MONDAY  
AUGUST  
25  
2025

DAY 1  
12:30-1:00PM



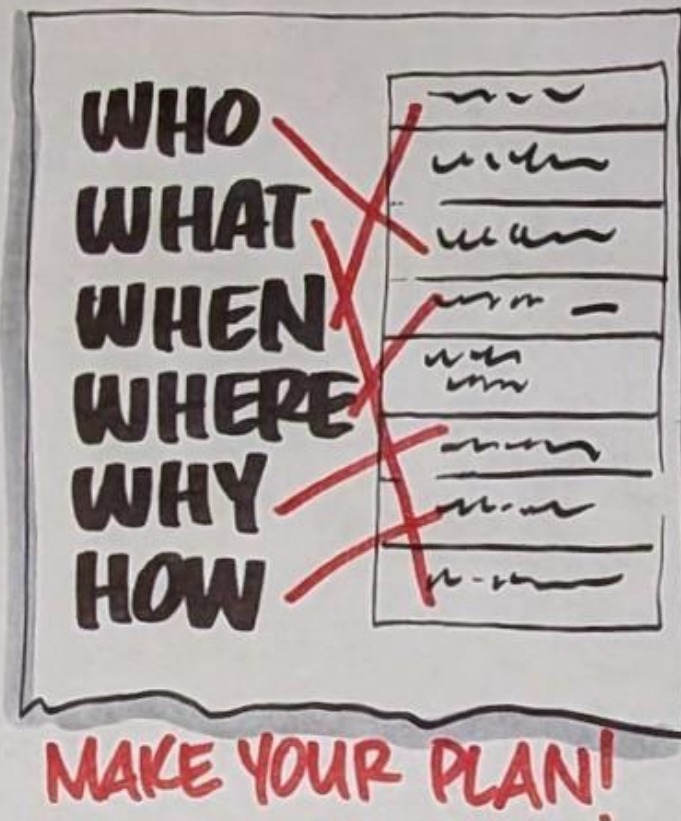
DAY



## REVIEW KEY INSIGHTS & WRAP UP

### INTERDEPENDENCIES TO DIVE-IN ON:

- COWS (MAD COW BY WATER)
- DEAD CHICKENS (500,000)
- ELDERLY
- DISEASE (BODY-FARM)
- DISPOSAL



MORE EXPERTS  
ON THE WAY!

Thank  
you!

- LOVE YOUR  
GRAND PARENTS

MORE REFLECTIONS  
FROM MORE NETWORKING



CHEESE IS REALLY  
GOOD FOR DEEP  
THINKING!  
(GO GET SOME)



MONDAY  
AUGUST  
25  
2025

DAY 1  
4:30-5:00PM



NEW CONNECTIONS  
IN NORTH CENTRAL!

ARTIST: WADE FORBES




SCAN ME



REDDALE  
COMMUNICATIONS  
www.reddale.com



DAY 

# WELCOME & OBJECTIVES

## "DAY 1 REFLECTIONS"

WELCOME  
BACK

YOUR ENGAGEMENT  
WAS FANTASTIC!

IF IT WERE EASY,  
IT WOULD BE DONE



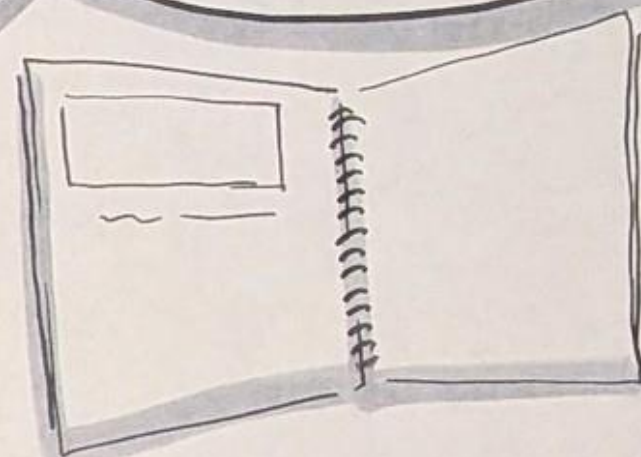
DETERMINE NEW WATER  
LAWS DURING A UNIQUE  
WEATHER SCENARIO

THREAT  
DOESN'T  
HAVE TO BE  
SPECIFIC

COORDINATION  
DOES THOUGH!

UNDERSTAND  
WHERE  
TO START  
TOGETHER

I LEARNED  
ABOUT  
PYROMES!



USE YOUR  
WORKBOOK/  
MATERIALS  
MORE!

LEVERAGE WORK DONE  
BY NATIONAL GUARD...

- BROAD STROKES
- PLAN PRIORITY
- WHO TO CALL



... LEARN FROM DEADLIEST FIRE IN U.S. HISTORY

WHEN  
DID THAT  
HAPPEN?

WHICH  
EVENTS IN  
THIS REGION?

WHO  
SHOULD BE  
HERE TOO?

TUESDAY  
AUGUST  
26  
2025

8:30-9:00AM



REDTAL  
COMMUNICATIO  
www.redtale.com



SCAN ME

ARTIST:  
WADE FORBES

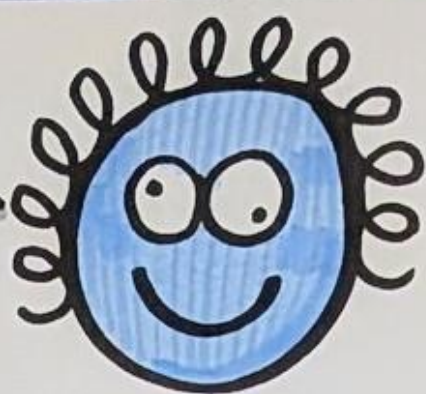


# ANALYTICAL

# APPROACH & FEEDBACK



SIT WITH NEW FRIENDS from the first day together



LET'S HELP EACH OTHER!

...LEARN HOW TO PRIORITIZE W/ SCENARIOS

DAY ONE SCENARIO TO BEGIN

- VULNERABILITY** = SUSCEPTIBILITY TO A HAZARD, ANYTHING PREVENTING SYSTEM PERFORMANCE
- HAZARD** = SOMETHING THAT CAUSES RISK / CAUSES A VULNERABILITY, NATURAL OR MAN-MADE
- CONSEQUENCE** = IMPACTS TO **LIFE, HEALTH, SAFETY** OF LIVING THINGS, POSITIVE OR NEGATIVE INTENDED OUTCOMES

... PURPOSEFULLY LEFT SCENARIO VAGUE TO ACCOUNT FOR QUESTIONS

WHAT POLICIES ALREADY EXIST?

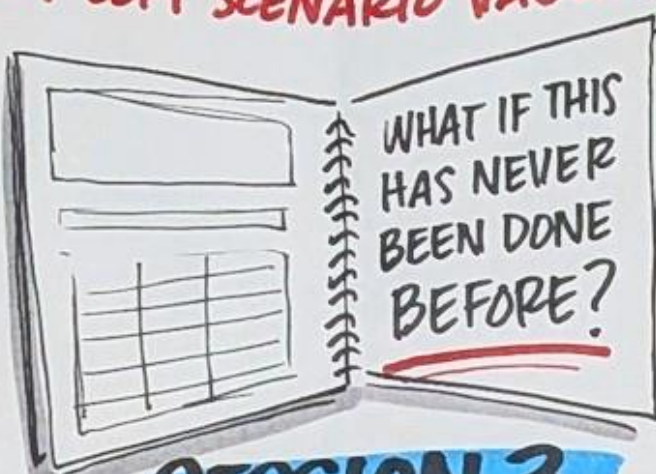
PAGE 57

DO THE MATH

VULNERABILITY  
HAZARD  
× CONSEQUENCE

**RISK SCORE**

PAGE 58



SESSION 3

SOME OF US WORK BETTER BACKWARD

- SOME RECENT EVENTS
- KNOWING WHAT YOU MIGHT NEED
- IDENTIFYING WHO TO CALL



UNLEASH YOUR MIND TO REALLY GET started

DO WE KNOW WHICH TREES BURN THE FASTEST?



THEN PRIORITIZE

**YOUR METRIC**

MAKE A DECISION ABOUT WHERE TO BEGIN!



DON'T FORGET ABOUT US!

**WHO DECIDES**  
IF WE KNOW HOW TO PROTECT ANIMALS?

- ESTIMATES?
- RULES?
- FARMER INPUT?
- OTHER MODEL?

What do we know already & then move to the unknown

... WHAT REMAINS CONSTANT ACROSS EVERY WILDFIRE?

DROUGHT CONDITIONS · LUMBER SCHEDULES · WEATHER PATTERNS · NEW CONSTRUCTION · OLD FOREST  
CIVIL UNREST · LACK OF INSURANCE · COMMUNICATION ISSUES · BLACKOUTS · HUMAN BIAS

SHARE YOUR WORK



ELEMENTS ARE SIMILAR TO A PRESS RELEASE!

... EDUCATING STAKEHOLDERS!

IDENTIFY IMPORTANT THRESHOLDS FOR NEW NOTIFICATIONS

SESSION THREE



- WRITE PROBLEM STATEMENT
- 1 **IDENTIFY** RISK EVENT
  - 2 **EXPLAIN** THE CAUSES
  - 3 **DETAIL** THE IMPACT
  - 4 **PROVIDE** CONTEXT
  - 5 **SPECIFY** CONSEQUENCES
  - 6 **CLEAR** EXAMPLES

PAGE 60

WHOA! WE MADE THIS OURSELVES!

DAY 2

9:00-10:15AM

TUESDAY  
AUGUST  
26  
2025

GOOD NEWS!  
WE THOUGHT ABOUT THIS...  
HERE'S THE RATIONALE

- PEOPLE MOVE ON
- DUPLICATE FOR OTHERS
- ADDRESS FUTURE ADMINISTRATION'S
- DOCUMENT YOUR BRILLIANCE



I'M TELLING MY CRUSTY GRANDMA!

- INTERNET OUT
- TEMPS DROPPED
- NO HEAT
- THEN PROTESTING

... WHO WILL TACKLE THE COLD FOR CIVIL UNREST ON 4 INCHES OF ICE?



PAPUA NEW GUINEA  
example with tribal conflict & witchcraft during rolling mudslides

ARTIST:  
WADE FORBES



SCAN ME







# EMERGING TRENDS

## IN CONDITIONS IN THE REGION

DECIDING HOW WE TRACK CHANGES

LOOK @ FUTURE, NOT JUST PAST

LEVERAGE UNIVERSITY DATA, 30-50 YRS

FREQUENCY OF YOUR PLAN BEING UPDATED & WITH WHAT

SHARING THE LOAD WITH CONSULTANTS

RISK HORIZON VARIES STATE-TO-STATE IN OUR REGION

95°

HOW HUMANS REACT & RESPOND

... WE JUST HAD 10 IN OF RAIN IN MILWAUKEE THIS LAST MONTH!

MAXIMUM WATER IN A DAY



POPULATION PROJECTIONS FACTORED INTO YOUR TRENDS

TREND LINE

DECIDING HOW FAR OUT IS IMPORTANT

MAGIC NUMBER =



TEN YEARS BECAUSE IT FORCES YOU BEYOND NOW

70°

IS THIS IDEAL TEMP FOR YOUR STATE... FOLLOW-UP WITH WEATHER SERVICE

AWARE OF RIGHT OF WAY ACCESS TO STATES!!

□ **RRAP** = REGIONAL RESILIENCE ASSESSMENT PROGRAM

□ **BASELINE** = ACTUAL DATA

"CHARGER FIRES!?!"



**EV DEMAND**

IMPACT TO FUEL LEVELS & TRANSMISSION IN THE REGION AS MORE CARS & CHARGING STATIONS

**Roll OUT**

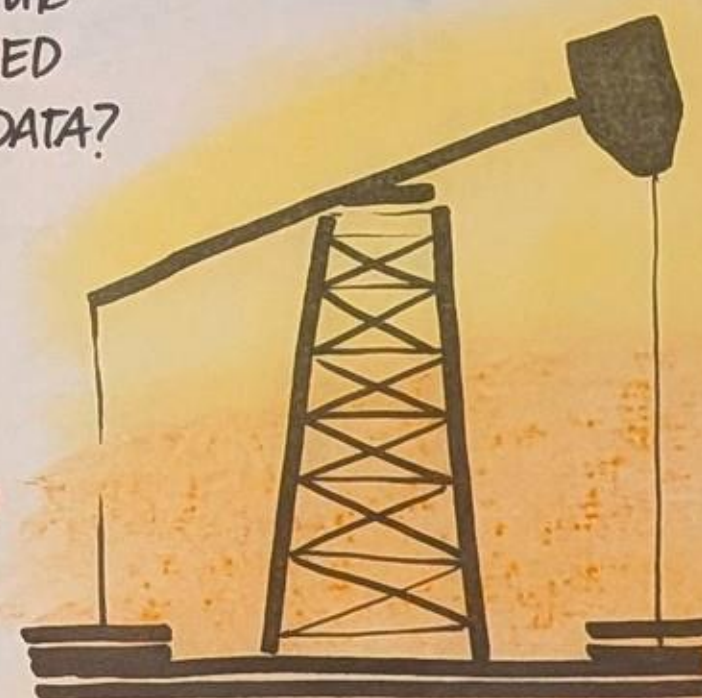
PAGE 29

RETIRING COAL PLANTS, DECREASE OF 2 PERCENT



HOW MIGHT YOUR STATE BE DIVIDED UP BY TREND DATA?

RENEWABLES  
WIND PATTERNS  
SOLAR INCREASES TO 20 PERCENT



**N. DAKOTA**

BACON BOOM  
TECH ADVANCES

WHO REFEREEES BETWEEN COMMERCIAL & RESIDENTIAL EQUITIES?

WORD OF CAUTION: WHEN THE DATA ARRIVES, TAKE YOUR TIME DRAWING CONCLUSIONS!



LOOK TO THE NORTH!

HOW ARE WELLS PERFORMING?

WERE 20 YEAR PROJECTIONS UPDATED IN LAST 20 YEARS?

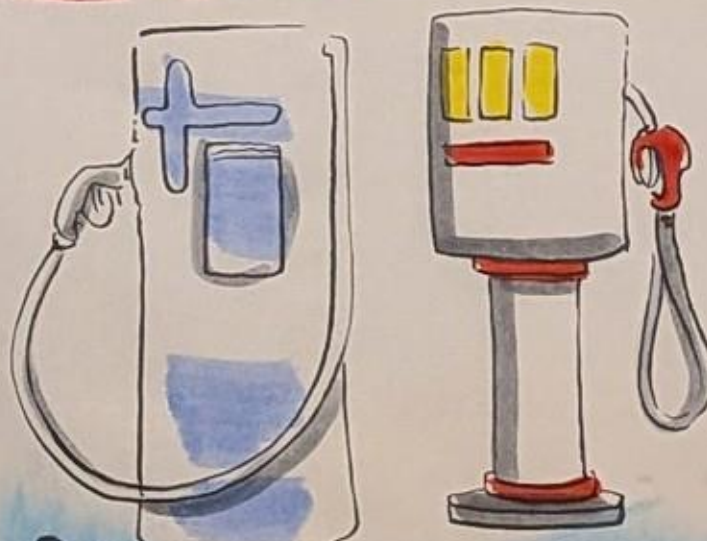
WHO HAS THE ACTUAL STATISTICS?

WHEN WAS LAST UPDATE?

SESSION FOUR



ARE UTILITIES READY TO SHARE 'THEIR AGE' OF INFRASTRUCTURE?



TRANSITION TO EV NOZZLE FROM GAS NOZZLE...

**NATURAL GAS**

INCREASE FROM 2013 TO 2023 CONSUMPTION



80 PERCENT OF HOMES HEATED IN MICHIGAN BY NATURAL GAS

NOT ANTICIPATING BATTERY ADAPTION OF STORAGE @ THIS TIME

ARTIST: WADE FORBES

MENTI POLL

TELL US WHICH TRENDS ARE MOST IMPORTANT TO YOUR STATE?

SUPPLY CHAIN  
GENERATION



SCAN ME



REDDTALE COMMUNICATIONS  
www.reddtale.com

TUESDAY  
AUGUST  
26  
2025

DAY 2

10:30-11:15AM

THESE TRENDS ARE VERY SENSITIVE TO POLICY!



# MITIGATION & COLLABORATION

WHICH GROUPS EXIST TO MEET?

CONSENSUS IN REGION

CROWDSOURCE OUTSIDE YOUR STATES

WHERE DO THESE GROUPS MEET?

WHAT DO WE DO TOGETHER @ THE TABLE?

LONG TERM

SEAMS

MANAGING PEOPLE, POLICIES, & GOALS

RRAP NOT WIDELY SHARED

- RIVER DATA
- FOOD GRADE of CO2
- MEGAN KNOWS A BUY for UNCLASS RRAPs
- LEVERAGE INFORMATION KNOWING NOT ALL ARE INFRASTRUCTURE EXPERTS

SIX CATEGORIES OF TOPICS IN STATES TO RESPOND TO ACUTE RISK

INTERNATIONAL & COASTAL SOLUTIONS LIKE GRASSLANDS

WHAT NEEDS TO BE NUGGED TOGETHER?

REGIONAL VS. NATIONAL Coordination

WE NEED TO KNOW!

RESULTS OF GRID RESILIENCE

WHAT IS UNIQUE IN THE OTHER STATE PLANS?

- BENEFICIARIES
- ROI ON PLAN
- WRITTEN GOALS
- BENEFITS / DRAWBACKS
- AVAILABLE ASSETS

WHICH PARTNERS ARE DOING WELL?

SESSION FIVE



EV BUSES STRATEGICALLY LOCATED IN IOWA

TO PROVIDE POWER TO RURAL AREAS & LIGHTING DURING DECLARED EMERGENCIES...

"MOBILE ENERGY SYSTEM"



MOBILE OR PERMANENT INSTALLED TRAILERS TO HELP BRIDGE ELECTRIC DURING EMERGENCIES

CLIMATE ACTION FRAMEWORK LOVE, MINNESOTA

NATURE BASED OPTIONS

WETLANDS FLOOD PLAN ARMY CORPS OF ENGINEERS

TUESDAY AUGUST 26 2025

DAY 2 11:15-12:00PM

ARTIST: WADE FORBES



SCAN ME





# SESSION

## HOTWASH DISCUSSION & TABLETOP REVIEW



- SITUATIONAL AWARENESS IN EXERCISE:**
  - HIT MANY ASPECTS IN HOTWASH

WERE THE  
RIGHT FOLKS  
HERE?

HOW DID I  
APPROACH  
THE RESPONSE?

DID I CALL  
SOMEONE  
NEW?

MARRY  
ANOTHER TABLE!

WHAT IF  
CANADIANS  
WON'T LISTEN  
TO MEGAN?

POST  
ANALYSIS  
RECOVERY

### STRENGTHS

- A STRONG NETWORK DOES EXIST IN THIS REGION!
- PETRO • DNR
- MIDWEST • COMPACT
- WE COLLABORATE WELL AS HUMANS

ADJUST OUR  
MINDSET...

WHEN DOES  
AN EVENT  
BECOME  
REGIONAL?

### GAPS

- THE CORRECT TIMES TO CALL / WHOM
- AGREEING ON MOST ACCURATE DATA

### BARRIERS

- WHOA!** DID NOT KNOW THAT REGIONAL COORDINATORS WERE ONLY PART-TIME POSITIONS

- PROBLEM LOOKING FOR A SOLUTION!** - BEN

- THRESHOLDS** for activating regional coordination

- INVITE LOCAL EMA** IF IT HAS HAZMAT COMPONENT... SHOULD ATTEND X NUMBER OF MEETINGS PER CALENDAR YEAR! (CONTINUING EDUCATIONAL CREDITS FOR THEM)

- SHIFT ACCESS** WILDFIRE TO EAST TO HISTORICAL DATA



HOME  
STRETCH!

(THANK YOU FOR COOKIES)

HOTWASH  
RUBRIC  
IS EXCELLENT!  
WILL USE IN  
THE FUTURE!

EAGLE EYE • PENGUIN • OD IN  
WWW.POWEROUTAGE.COM

IDENTIFY WHAT  
ISSUES/RESOURCES  
AFFECT MULTIPLE  
STATES  
(EX. BP WHITING)

ADD GRAPHICS  
AS HANDOUTS ON  
THE TABLES

DATA AVAILABILITY  
TRIGGER POINT TO  
"MAKE THE CALL"  
TO MIDWEST PETROLEUM  
COLLABORATIVE...

MISSING KEY  
PARTNERS @  
THE TABLE

INFO SHARING  
INDUSTRY → STATE

START OUR HEALING  
RIGHT HERE!

TUESDAY  
AUGUST  
26  
2025

DAY 2  
3:15-4:30 PM



ARTIST:  
WADE FORBES



REDTALE  
COMMUNICATIONS  
www.redtale.com



SCAN ME



REVIEW KEY INSIGHTS, IDENTIFIED GAPS, WRAP UP &

# Next Steps

HAPPY KANSAS  
COULD CRASH  
TODAY'S PARTY

AWESOME  
GROUP HOW WE  
CAME TOGETHER!

THANKS  
FOR NOT FIGHTING  
THE SCENARIO

PILOT,  
WE'VE ONLY  
JUST BEGUN

LOVED  
DIGGING INTO  
THE DATA

MORE:

- MAPS ☒ ☒ ☒ ☒  
- DATA ☒ ☒ ☒ ☒

GLAD

WE COULD HEAR  
FROM PEOPLE WHO  
FIGHT WILDFIRE.  
THIS WAS A COMFORT.  
IMPORTANT TO SEE  
WHAT OTHERS LOOK AT.  
COUNTRY BOY WHO  
DIDN'T EVEN KNOW  
WHERE TO PARK!

EMERGENCIES  
ARE SO MUCH  
MORE THAN  
MAKING A  
SINGULAR  
CALL TO SOMEONE

PASS  
AROUND  
THE MIC  
"FIRESIDE CHAT"

LEARNED A LOT  
FROM SCENARIO,  
MORE PLEASE!

TODAY WAS  
MY FIRST  
TABLETOP  
EXERCISE!  
AWESOME

NICE JOB WITH  
FACILITATION  
& NO DEATH BY  
POWERPOINT OR  
BY PANEL!

YOU  
FOLOWED  
THROUGH!

DROVE  
6 HOURS  
FROM KANSAS

BRING YOUR OWN

STATE PLAN TO SHARE, MAKE  
ADJUSTMENTS, READ THEM ALOUD

RISK

RANKING B =  
EXCELLENT!!

PNNL YOUR  
STUFF READ  
LIKE A TEXTBOOK!  
VERY NICE JOB ON  
DEFINITIONS!

MY AGENCY SAID

MY STATE WON'T EVEN HAVE  
WILDFIRES & THAT CONCERNED  
ME SO I CAME TO LEARN MORE!

REAL-TIME SHARING

IS HAPPENING IN SOME PLACES,  
LIKE IN IRWIN, BUT WE ALSO KNOW  
WHICH STATES DO NOT SHARE AT ALL.

VOLUNTEERS DO NOT ALWAYS HAVE THE TIME  
TO SHARE STATE WILDFIRE DATA... REMEMBER



ENSURING PEOPLE ARE  
ALLOWED IN SYSTEMS  
TO ACCESS DATA

I'M NEW HERE,

WE ARE DEFINING ROLES &  
LEARNING WHERE TO PLUG-IN

HAPPY TO HEAR

OTHER STATES ARE IN  
SIMILAR POSITIONS,  
BOTH GOOD & BAD... "BASBUDDY"

NICE JOB

GATHERING GROUP  
& STRETCHING THEM  
ON SOMETHING  
UNIQUE!

TUESDAY  
AUGUST  
26  
2025

4:30-5:00PM

UPDATE YOUR PLAN  
CONTACTS & PROVIDERS

REALLY ENJOYED RISK  
SCENARIOS, MAD LIBS, GOING DEEPER TO EXPLORE  
GOOD/MEDIUM/BAD DAY & LOVE THESE FORUMS  
FROM DOE & PNNL TO DISCUSS THESE ITEMS.

ARTIST:  
WADE  
FORBES



SCAN ME



# Welcome & STATE HOST KEYNOTES

THIS REGION NEEDS A PLAN @ UTILITY LEVEL FOR CRITICAL INFRASTRUCTURE

WE REIN ON OUR NEIGHBORS: FUEL PIPELINE THREATS IMPACT

13,000 LAKES

HUGE LAKE BORDER

DROUGHT? FLOODING? WILDFIRES? AIR QUALITY?

THREATS IMPACT

PUT OUR FEET UP ON SMALL COFFEE TABLE TO REVIEW WHERE WE ARE!

BRAIN TRUST FOR REGIONAL RISK ASSESSMENT

CHECK OUT YOUR WORKBOOKS!

THANK YOU PNPL for everything

CUTE LITTLE

OUR STATE IS CHANGING

ADJUST HOW WE VIEW OUR STATE & NEIGHBORS

1 BLOCK FROM CAPITAL & FOSSILS IN THE FLOOR

PLANS XCEL HAS A LOT TO REVIEW TO HELP WITH OUR RESPONSE

DEPARTMENT OF ENERGY UNITED STATES OF AMERICA

MODELS ARE IMPORTANT ASPECTS

GRASSLAND AND FOREST

UTILITY ATTENTION

WHY THESE STATES?

PARTNERSHIPS looking back @ 30 years of data

ECOLOGICAL

WHICH SHIFTS ARE EMERGING?

GOVERNANCE

MOMENTUM (WEST TO EAST)

WILDFIRE SEASONS

LANDSCAPES THAT CREATE CHARACTER

YOUR DOORSTEP TODAY

PACIFIC NORTHWEST NATIONAL LABORATORY

SLIDES WORKBOOK EXPERTS TO DEVELOP YOUR UNIQUE PLAN

OUR DOORSTEP TOMORROW

MONDAY AUGUST 25 2025

DAY 1 12:30-1:00PM

# DEFINING the NORTH CENTRAL REGIONAL ENERGY PROFILE

**PAGE 18 SMALL GROUP**

DEFINING REGIONALITY

WHAT MAKES ENERGY SYSTEMS "REGIONAL" VS. STATE SPECIFIC?

FEATURE/SYSTEM WHY REGIONAL? DATA/TOOL

"IF YOU'RE READY, STICKY THOSE STICKIES!!"

MUTUAL AID PROXIMITY SUPPORTS FASTER RESPONSE NATIONAL ASSOCIATION

**PAGE 19**

IDENTIFY REGIONAL COMPONENTS

KEY INFRASTRUCTURE	RELATIONSHIP	DATA/TOOL
VIKING PIPELINE	THEY SERVE	

WHAT ARE THE GAPS? ...HOW DOES YOUR UNIQUE BACKGROUND HELP? HINDER?

**PAGE 13**

5 PERCENT DECREASE IN COAL USAGE WITH 10 PERCENT IN WIND

10 YEAR ANALYSIS REVEALED MORE POWER NEEDS FOR

- SEASONAL LOADS
- DATA CENTERS
- OIL & GAS
- HARVESTING

**PAGE 31**

86GW OF TRANSFER CAPACITY

85 GW OF ENERGY CAPACITY

RELYING ON CRITICAL CORRIDORS:

- TRANSMISSION BETWEEN IOWA & ILLINOIS SUPPORTS GRID BALANCING
- RTO SEAMS BETWEEN KANSAS & NEBRASKA

ALONG WITH WIND TO THE WESTERN STATES

DETERMINE HOW TO SUPPORT REGIONAL LOAD?

KNOWING THE LARGER ENERGY USERS STATE-BY-STATE

HOW DO WE ENSURE DATA CENTERS DO NOT END UP IN EVERY TOWN? MANAGE HOME HEATING & COOLING IN NEXT 10 YEARS? WHO DECIDES ON THIS...

WHICH DO ENTITIES ARE IN OUR REGION WHERE WE SHOULD HAVE A RELATIONSHIP?

WHERE IS THERE RESISTANCE?

WHAT CAN WE LEARN ABOUT PIPELINE OWNERSHIP IN THE STATES?

NATURAL GAS DECLINE LAST 10 YEARS, BUT GOING BACK-UP

GAS DECLINE W/ EV CARS COMING ONLINE

1,100 PER DAY FROM N. DAKOTA

8,100 PER DAY FROM CANADA

CRUDE OIL BARRELS

NOT ALL PIPELINES FLOW THE SAME DIRECTIONS

- EXXON
- SUNOCO

ARE YOU USING THE CLEAN COAL NEAR YOU?

HOW DOES PIPELINE DIRECTION IMPACT OUR EMERGENCY PLANNING?

WE LOVE TO RIDE THE RAILS!

HOW DOES RAIL & TRANSPORTATION PLAY A PART TOO?

DO WE KNOW THE LEADERS?

HOW DO WE MONITOR CRITICAL PIPELINES IN OUR EMERGENCY PLANNING?

NATURAL GAS FLOWS DIFFERENTLY INTO THE REGION'S

HOW DO WE KNOW FOR AGRICULTURE?

DIESEL FUEL USAGE FARM DATA

OUR REFINERY LOCATIONS HAVE UPSTREAM & DOWNSTREAM IMPACTS ON EMERGENCY INTERDEPENDENCIES

WE HAVE BIGGEST RAILYARD IN THE WORLD... DO WE UNDERSTAND WHAT GOES THROUGH OUR STATE NEEDS?

HOW IS PROPANE BEING DISTRIBUTED IN OUR REGION?

ICEBREAKER!

WHAT BRINGS OUR STATES TOGETHER?

- WIND POWER RANK 3 IOWA MINNESOTA N. DAKOTA
- ETHANOL PRODUCTION 4 IOWA NEBRASKA MINNESOTA S. DAKOTA
- CORN IS QUEEN!
- PUBLICLY OWNED UTILITIES
- HIGH HEATING DEMANDS AVERAGE 6,000 HEATING DEGREE DAYS 7,800 HEATING DEGREE DAYS IN A ROW
- ENERGY EXPORT ETHANOL!
- POWER MGMT CHALLENGES? VERY RURAL VERY FLAT W/ NO OBSTRUCTION

STORAGE OF NATURAL GAS PRESIDES PRIMARILY IN MICHIGAN OUTSIDE OF OUR REGION

EXPORTING W/ NO POLICY TO SOUTHERN REGIONS COULD PRESENT PROBLEMS

WHAT DATA DO WE NEED NOW?

KNOWING WHAT MAKES OUR REGION SOOOOO UNIQUE?

MADISON, WI • AUGUST 25-26, 2025

NORTH CENTRAL REGIONAL RISK ASSESSMENT WORKSHOP

ARTIST: WADE FORBES



...CAN BE SEEN FROM SPACE!!

NORTH DAKOTA

NGLs (NOT CAPTURED!)

MENTI POLLS

9642 6228

NOT GRADED

PLEASE LIKE US!

# REGIONAL RISK LANDSCAPE

WHICH IS BIGGEST CONCERN?

"EVERYTHING KEEPS ME UP @ NIGHT..."

WHAT AREA DO YOU KNOW LEAST ABOUT?

NEED SOME DAKOTA POCs

TRANSMISSION AUTHORITY

WHAT DO YOU CONSIDER MOST IMPORTANT?

LAKE MICHIGAN / WATER

S. DAKOTA TRIBES

PIPELINES

WHY DEVELOP REGIONAL RISK ASSESSMENT?

IMPROVE MUTUAL AID RESPONSE: IDENTIFY 2ND & 3RD ORDER EFFECTS

DIVERSITY OF RESOURCES: STORMS DO NOT KNOW BORDERS. GRID RELIABILITY

WHAT ARE THE INDIVIDUAL ACTION STEPS?

PEOPLE, GROUPS, ASSETS, PARTNERSHIPS, DEVELOP SURVEYS, DETERMINE LOCAL OBJECTIVES

STEP 1: IDENTIFY VULNERABILITIES

ASSETS

HISTORICAL DATA

RISK ESSENTIALS BY CESER

"ANYTHING THAT CAN DAMAGE... IN OUR REGION"



WHICH EVENTS WERE MOST COMMON IN LAST 3 YEARS?

POLAR VORTEX - EXTREME COLD

TORNADO FLOOD - WILDFIRE

VULNERABILITY =

NO BASEMENT LOCATION CONNECTIONS

SINGLE POINT OF FAILURE AGE OF INFRASTRUCTURE

BECOMES SUSCEPTIBILITY TO A PARTICULAR HAZARD

CONSEQUENCE =

IMPACT TO POPULATION

LOCAL VS. WIDESPREAD

NOT ALL ECONOMICAL (LIVES LOST)

DIVERSITY OF STAKEHOLDERS

I'VE NEVER HAD A LIST LIKE THIS BEFORE. NOW, I KNOW!

THESE RATINGS HELP DETERMINE FREQUENCY OF EMERGENCY MEETINGS

HAZARD IDENTIFICATION

HISTORICAL DATA

EXISTING PLANS

EXPERT CONSULTATION

BUT



HOW DO YOU PUT A NUMBER ON LIKELIHOOD?

HARD TO PREDICT...

ANOMALIES

BOX CUTTERS

MODELS CHANGE QUICKLY

EMERGENCIES DO NOT OBEY EMERGENCY PLANS

CURIOUS & THINKING



the beginning is the hardest part

WE DO WELL WITH TORNADOS IN THIS STATE...

WHEN DO YOU CALL YOUR NEIGHBOR STATE?

WILDFIRES!!

NOW, WHICH EMERGENCY IS MOST DIFFICULT TO PREDICT?



RED/HIGH MEANS ALL THESE THINGS

...AND THIS IS WHY WE ARE HERE! MODEL OTHER REGIONS!

MITIGATION SCALE

TIME HORIZON

RECOVERY

RESILIENCE

MONITOR / REVIEW

STATISTICS / TRENDS



@ YOUR TABLES, USE THE MAD LIBS TO BEGIN EXPLORING!

PASS YOUR THOUGHTS TO NEXT TABLE

HAZARD MITIGATION PLAN

BLIZZARDS

WINTER IN MINNESOTA...

HOW YOU CAN START ANY SCENARIO THAT REQUIRES A PLAN

COLD WEATHER

COLLEGE WITHOUT INTERNET

CIVIL UNREST

WIND STORM

LARGE ELDERLY POPULATION

HOW PREPARED?

MORGUES WITHOUT BACK-UP POWER / DISEASES

"THE BODY FARM"

TRAUMA, LONG-TERM & GENERATIONAL

LOCAL POLICE

LACK OF

MEDICINE

GENERATORS

WATER / FOOD

TRANSPORTATION



FLOODING

MONDAY AUGUST 25 2025

DAY 1 2:30-4:30



# MODULE 1

PAGE 82

# WILDFIRE TABLETOP EXERCISE

PULL PEOPLE TOGETHER FOR ONE CALL TO iron out FUEL COORDINATION & REPORT PUBLISHING



**WHEN IN DOUBT, REACH OUT!**

IN AN EMERGENCY, UNSURE EXACTLY WHEN TO OFFER INFORMATION TO THE APPROPRIATE PEOPLE WHO NEED TO KNOW

**WHO IS BALANCING PRIORITIES?**

STATES MANAGE THEIR OWN CONCERNS BUT MUST FOCUS ON OVERLAPS WITH STATE-TO-STATE NEEDS

**12,000 ACRES ARE BURNING!**

**CONTROLLED BURN SCHEDULE ADJUSTMENT**  
(THANKS A LOT KANSAS!)

**HARVESTING CROPS & EXPORTING**

**AIR QUALITY CONDITIONS**  
IN NEIGHBORING STATES  
DETERIORATING VERY QUICKLY

**WHEN THE WINDS SUBSIDE**  
THE COORDINATION & DETAILS STILL REQUIRE ATTENTION

**WHO CONTROLS THE MESSAGING?**

- # OF PIOs
- INCIDENT COMMANDER COORDINATING WITH GOVERNOR
- COMMAND CENTER PLAYERS
- STATE & FEDERAL
- UTILITY COORDINATORS



**AND IT HAS TO MATCH!**

**ONE VOICE FROM YOUR UNIQUE AREA OF COORDINATION**

**... KNOW YOUR AUTHORITY!**

**EAGLE EYE LOG-IN**  
"REFRESHED REGULARLY"

SCRAPING UTILITY WEBSITES TO KNOW LATEST & GREATEST ABOUT OUTAGES & STATUS

[www.poweroutage.com](http://www.poweroutage.com)

PREVIOUS EFFORT  
**ODIN**  
FIZZLED FOR VARIETY OF REASONS (DIRECT PIPELINING)

**OPERATION HOT DISH**  
Too hot to handle. Too critical to fail.

ARTIST: WADE FORBES



STATES DON'T TYPICALLY TELL ONE ANOTHER WHAT TO DO

**FUEL SUPPLY & OUTAGES**

**RAILROADS**  
PERSONNEL ARE VERY RESPONSIVE IN EMERGENCIES

LINES ON TRACKS  
ANYONE READY TO DEAL WITH TRAIN DELAYS?

SANDBAGS FOR FLOODS  
DO YOU HAVE RAILYARDS ON SPEED DIAL YET?

**RAIL ESC (EMERGENCY SECURITY COORDINATOR)**  
WHO CAN WORK WITH DEPT. OF TRANSPORTATION TO ACTUALLY STOP A TRAIN!



**EVERYONE SHOULD KNOW A PERSON WHO CAN STOP A TRAIN!**

**ACTION**

SEND OUT EAC LIST DURING MONTHLY NEWSLETTER PRIOR TO PENGUIN LAUNCH



**KNOW YOUR NANCY**

YOUR REGIONAL COORDINATOR (REMEMBER: PART-TIME JOB)

**YOUR EMAILS TO REACH OUT:**

- MORE NOTIFICATION IS BETTER
- CREATE THIS RELATIONSHIPS NOW
- DO NOT ASSUME SOMEONE KNOWS

**KNOWING**

**WHICH CELL TOWERS ARE STILL UP & RUNNING**  
**PROPANE GENERATOR**  
RESERVES INVENTORY AVAILABILITY

**YOUR RESPONDERS**  
FIGHT EMERGENCIES REMOTELY ALL THE TIME & ARE ACCUSTOMED TO THESE CONDITIONS WHEN THEY COORDINATE WITH UNITS

**UTILITIES**

BY NOW, WORKING EMAIL IN THEIR ACTIVITIES



**DEPLOYING BLACKHAWKS**

- NOT IMMEDIATE
- CONSIDER REGULARLY MEETINGS
- LOOK INTO CIVIL AIR PATROL

EXECUTIVE ORDER 12333

**PROTECTING PUBLIC & RESPONDERS**

**UM, WISCONSIN, UM...**  
CAN WE BORROW YOUR FIRE SUPPRESSING AIRCRAFT?  
COOL, BUT WE NEED IT BACK FOR THE SAME FIRE!

**FIRES CROSSING INTO WETLANDS, PRIVATE STRUCTURES**  
**52,222 ACRES BURNING**

**WILDLIFE REFUGE**  
IN SHERBURNE  
PAST ELK FOREST

**STATE LINES!**

**MONEY COORDINATION**

**PROVIDE THEN BILL STATE WHEN IT'S OVER**

**EMERGENCY COORDINATION**  
HAPPENING QUICKLY, REQUESTS MADE

**THIS COORDINATION CAN HAPPEN WITHIN AN HOUR!**  
BUT WITH THE UTILITIES, THERE ARE ADDITIONAL LAYERS WITH TRANSMISSION LINES

**ANAMOLIES WILL SHOW UP, SOURCE YOUR WORK CONSTANTLY**

**COORDINATION CALLS TO MAKE**

- FINDING OUT EXTENT & IMPACT
- WHICH TRANSMISSION
- ACTIVATE SECC IN MINNESOTA WITH LOCAL GOING FIRST
- WATCHING SO FAR...**
- MONITORING STAGE - ESCF12

**MINNESOTA:**

- A LOT OF RESOURCES AVAILABLE IN THE STATE
- TONS OF AIRCRAFT TO BE AWARE OF FIREFIGHTERS UNDERNEATH

**ST CLOUD**  
DO NOT HAVE LEVEL OF P3 COORDINATION GOING LIKE WISCONSIN  
**YET...**

**70+ MPH WINDS!**  
WIND LIMIT FOR ANY AIRCRAFT

**AND THEN**



- UNSEASONABLY LOW PRECIPITATION
- MN & WI IN SEVERE DROUGHT
- EMERALD ASH BORER (EAB) INVASION
- ASH TREE POPULATION DEVASTATION

**SUMMER STORM ARRIVES**

- THUNDERSTORMS
- HIGH WINDS
- MULTIPLE TORNADO TOUCHDOWNS

**TRIGGERED CONCERNS**

- ELECTRICAL INFRASTRUCTURE
- PUBLIC SAFETY CONCERNS

**WIDESPREAD POWER OUTAGES**  
TO KEY TRANSMISSION LINES IN ST CLOUD

**... CASSEROLE OR HOTDISH?**

**SESSION SIX**



**TUESDAY AUGUST**

**2025**

**DAY 2**

**1:00-3:00PM**