

PART III — List of  
Documents, Exhibits and Other  
Attachments

Section J

Appendix H

LIST OF APPROVED LABORATORY  
LAND/FACILITIES (OWNED AND LEASED)

Section J - Appendix H

LIST OF APPROVED LABORATORY  
LAND/FACILITIES (OWNED AND LEASED)

(Depicted by Figures JH-1,  
JH-2)

DOE-SC Owned		
Land	Property ID	Predominant Use
PNNL Site	DRLand1, DRLand2, DRLand3, DRLand4, DRLand5, DRLand6, DRLand7, DRLand8, DRLand 9, DRLand10	Approximately 593.774 acres of Federally owned land (FIMS ID DRLand1, 2, 3, 4, 5, 6, 7, 8, 9,10) reserved for PNNL use located within Benton County, WA and in proximity to the Hanford Site 300 Area and the BMI Land-Richland. The PNNL Site contains 116.7 acres of a Preservation Designated Area (PDA), which is not available for development. <sup>1</sup>
Facility Name	Property ID	Predominant Use (FIMS Usage Code)
Coastal Security Institute 1	CSII	Office
3020 Environmental Molecular Science Laboratory	3020EMSL	Chemistry Laboratory (Non-Nuclear)
3065 South Campus Warehouse	3065	General Storage
331K Self-Contained Laboratory	331K	Other Support Lab
3370 Grid Storage Launchpad	3370	Chemistry Laboratory (Non-Nuclear)
3400 Discovery Hall	3400	Tech Transfer/Conference Buildings
3410 Material Science & Technology Laboratory	3410	Chemical Laboratory (Nuclear)
3420 Radiation Detection Laboratory	3420	Other Materials R&D Test Buildings

<sup>1</sup> The Preservation Designated Area (PDA) is owned by the Office of Science but will be managed and controlled by the Richland Operations Office (RL). All activities to be conducted on the PDA must follow Pacific Northwest Site Office (PNSO) rules, procedures, and policies, but will be treated as an offsite location relative to any PNNL activities or responsibilities, unless otherwise covered in the 2019 Memorandum of Understanding (MOU) between PNSO and RL.

DOE-SC Owned		
Facility Name	Property ID	Predominant Use (FIMS Usage Code)
3425 Ultra Low Background Counting Laboratory	3425	Other Materials R&D Test Buildings
3430 Ultratrace Laboratory	3430	Other Materials R&D Test Buildings
3440 Large Detector Laboratory	3440	Other Support Labs
3455 Trailer	3455	Office
3465 Trailer	3465	Office
3475 Applied Engineering Laboratory	3475	Other Support Lab
361 Modular Equipment Shelter	361	Other Support Lab
3820 Systems Engineering Building	3820	Computation Laboratory
3820A Bldg Controls & Diagnostics Lab	3820A	Other Research and Development
3820B Second Life Test Facility	3820B	Other Support Laboratory
3850 General Purpose Chemistry Lab	3850	Chemistry Laboratory (non-nuclear)
3860 Engineering and Analysis Bldg	3860	Office
Atmospheric Measurement Laboratory	AML	Metrology and Calibration Laboratories
AML North East Storage	AMLNE	General Storage
Auditorium	AUD	Auditorium/Theater
Testing and Analysis Laboratory	550	Other Support Laboratory
BMI Richland Sewage Lift Station	BRSLs	Lift Station (Sewage)

Bulk Receiving & Shipping Warehouse	BRSW	General Storage
Engineering Development Laboratory	EDL	Other Support Lab
Energy Sciences Center (ESC)	3340	Chemistry Laboratory (Non-Nuclear)
Heat Transfer Building	3360	Plant (Evaporative Cooling)
Mathematics Building	MATH	Office
Chemical Engineering Laboratory	CEL	Other Chemistry Laboratory
Grid Storage Launchpad	3370	Chemistry Laboratory (Non-Nuclear)
Grounds Equipment Storage	GES	Hazardous/Flammable Storage
Grounds Equipment Storage Shed 2	GES2	General Storage
Lab Home A	LabhomeA	Other Research and Development
Lab Home B	LabhomeB	Other Research and Development
Life Sciences Laboratory 2	LSL2	Chemistry Laboratory (Non-Nuclear)
Life Sciences Laboratory 2A Chemical Storage	LSL2A	Hazardous/Flammable Storage
Process Development Laboratory East	PDLE	Other Support Labs (High Bay)
Process Development Laboratory West	PDLW	Other Support Labs (High Bay)
Physical Science Laboratory	PSL	Chemistry Laboratory (Non-Nuclear)
Research Operations Building	ROB	Office
Technical Support Warehouse	TSW	General Storage

DOE-EM Owned <sup>2</sup>		
Facility Name	Property ID	Predominant Use (FIMS Usage Code)
350 Plant Operations & Maintenance Facility	350	Maintenance Shops, General
350A Paint Shop	350A	Paint Shops
350B Warehouse	350B	Pipe Fitting and Plumbing Shop
350C Storage Building	350C	General Storage
350D Oil Storage Facility	350D	Hazardous/Flammable Storage
318 Radiological Calibrations Laboratory	318	Calibration Laboratory
318 Boiler Annex	318BA	Other Boiler
331 Life Sciences Laboratory 1	331	Biological Research Laboratory
331 Boiler Annex	331BA	Other Boiler
325 Radiochemical Processing Laboratory	325RPL	Chemical Laboratory (Nuclear)
325 Boiler Annex	325BA	Other Boiler
312 Pump Pit & 3614A River Water Support	312	Pumping Stations (Non-Potable Water)
385 Sanitary Water Pump House	385	Pumping Stations (Potable Water)
300 Area Research Support Building	3220	Office
Signals Research Laboratory	339A	Other, Other Research and Development

<sup>2</sup>The Operational Agreement between the Office of Science, Pacific Northwest Site Office, and the Office of Environmental Management, Richland Operations Office (included as Section J, Appendix F of this Contract) explicitly addresses DOE-EM real property in use by PNNL which includes the facilities explicitly listed in this Appendix as well as other structural facilities supporting their operation. DOE EM-Owned Facilities in the 300 Area will be removed when no longer needed by SC and transitioned to EM in accordance with the referenced DOE-RL and PNSO Operational Agreement.

Contractor Leased-Programmatic <sup>3</sup>		
Facility Name	Property ID	Predominant Use (FIMS Usage Code)
Albuquerque NM Office	Albuquerque	Office
ARM Aerial Facility	AAF	Helicopter and Airplane Hangars
Intelligence, Research, Education, & Solutions	DCIRES	Office
Portland Lighting Lab	PLL	Laboratories, General (Non-Nuclear)
Research Support Warehouse	RSW	Storage
RPMP West	RPMPW	Programmatic General Storage
UW South Lake Union	UWSLU	Biological Research Lab (non-exclusive license)
John Wayne Marina	SMarina	Other, Water Transportation Systems

---

<sup>3</sup> Contractor Leased Facilities are added to and removed from this list as approved Real Estate Packages, where DOE reviews terms and conditions, rates, market surveys and mission need to determine the use of this space by the Pacific Northwest National Laboratory. This establishes reimbursement for those lease costs incidental to the performance of work.

Contractor Leased-Institutional <sup>3</sup>		
Facility Name	Property ID	Predominant Use (FIMS usage Code)
2400-2410 Stevens Office Lab	2400STV	Applied Physics Laboratory
2460STVCN Records Storage	2460STVCN	General Storage
PNNL Seattle	BSRC	Office
WSU Bioproducts Science & Engineering Laboratory	WSUBSEL	Biological Research Laboratory
Biological Sciences Facility	BSF	Biological Research Laboratory
Battelle Washington Office (ILA)	BWO	Office
Robb House (ILA)	MSL6	General Storage
Computational Sciences Facility	CSF	Computation Laboratory
Environmental Technology Building	ETB	Office
Information Sciences Building 1	ISBI	Office
Information Sciences Building 2	ISB2	Office
Laboratory Support Building	LSB	Office
Marine Sciences Laboratory 7 Office	MSL7	Office
National Security Building	NSB	Office
PNNL Portland Office	PORTLAND	Office

<sup>3</sup> Contractor Leased Facilities are added to and removed from this list as approved Real Estate Packages, where DOE reviews terms and conditions, rates, market surveys and mission need to determine the use of this space by the Pacific Northwest National Laboratory. This establishes reimbursement for those lease costs incidental to the performance of work.

Contractor Leased-Institutional <sup>3</sup>		
Facility Name	Property ID	Predominant Use (FIMS usage Code)
Systems Engineering Facility	SEF	Office
SIGMA 1 Office Building	SIGMA1	Office
Business Operation Building	620	Office
Joint Global Change Research Institute	JGCRI	Office

<sup>3</sup> Contractor Leased Facilities are added to and removed from this list as approved Real Estate Packages, where DOE reviews terms and conditions, rates, market surveys and mission need to determine the use of this space by the Pacific Northwest National Laboratory. This establishes reimbursement for those lease costs incidental to the performance of work.



BMI-owned		
Land <sup>4</sup>	Property ID	Predominant Use
BMI Richland Land	BRLand	Battelle Memorial Institute (BMI)-owned land is included in this list as DOE has authorized work to be conducted at specific work locations on approximately 70.183 acres of this land, or it has been deemed beneficial to the operations of the Pacific Northwest National Laboratory in direct connection with and in proximity to the facilities listed herein.
BMI Sequim Land	BSLand	Battelle Memorial Institute (BMI)-owned land is included in this list as DOE has authorized work to be conducted at specific work locations on 65 acres of land and 52 acres of tide lands, or it has been deemed beneficial to the operations of the Pacific Northwest National Laboratory in direct connection with and in proximity to the facilities listed herein.

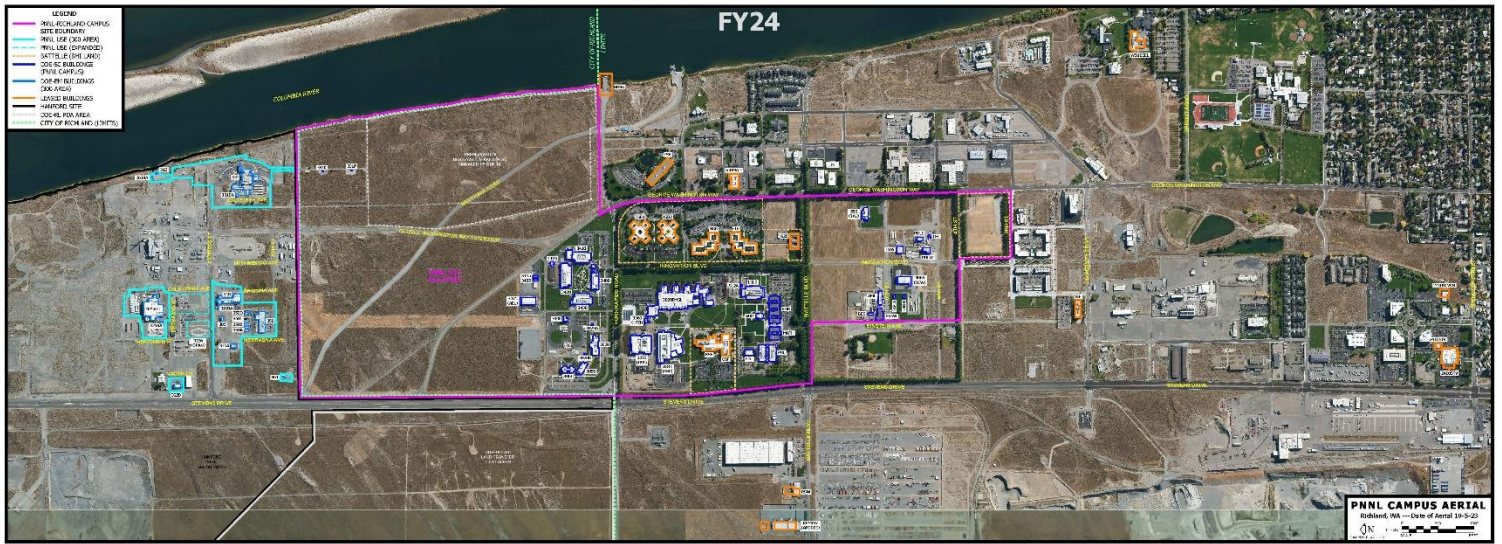
---

<sup>4</sup> The majority of BMI-owned land and supporting site infrastructure or Other Structures and Facilities (OSF) is located in Richland, WA in proximity to the PNNL Site. The listed BMI-Richland real property excludes the Battelle Staff Association (BSA) Recreation Area, Kindercare, non-listed buildings, and other land parcels as specifically agreed to by DOE and Battelle. All other vacant Battelle-owned land parcels are provided for the beneficial use of PNNL. Use of these land parcels by PNNL is limited to those work activities as approved or authorized by DOE. Non-PNNL activities may be conducted in these areas as long as they are not in conflict With PNNL needs. PNNL activities may also be authorized on the excluded Battelle-owned property, with proper authorization of Battelle. Additionally, Battelle acknowledges responsibility for non-PNNL activities that occur on Battelle owned excluded land as identified in this footnote, including appropriate postings or signage. The remaining BMI-owned land and supporting site infrastructure or Other Structures and Facilities (OSF) is located in Sequim, WA. The BMI-Sequim real property excludes the agricultural and forested areas on vacant land parcels, non-listed buildings, and other land parcels as specifically agreed to by DOE and Battelle. The inclusion of BMI-owned land into this list does not specifically address any potential costs or other liabilities by either party; it is only identified to designate authorized work locations. Supporting site infrastructure, or OSFs as defined and categorized in FIMS, include any fixed real property improvements to land that are not classified as a building or predominately housed within a building

BMI-owned		
Facility Name <sup>5</sup>	Property ID	Predominant Use (FIMS Usage Code)
BMI Richland River Station	BRRS	Pumping Station (Non-Potable)
MSL 1 Beach Office-Lab	MSL1	Biological Research Laboratory
MSL1 Greenhouse	MSL1G	General Storage
MSL1W Waste Wtr Treatment Building	MSLIW	Plant (Sewer, Primary Treatment)
MSL2 Biotech, Conf, Shop Building	MSL2	Biological Research Laboratory
MSL3 Filter Building	MSL3	Other Service Buildings
MSL4 Pumphouse	MSL4	Pumping Stations (Potable Water)
Marine Sciences Lab 5, 5A, 5B, 5C, 5D, 5E	MSL5ABC	Chemistry Laboratory (Non-Nuclear)

<sup>5</sup> Battelle Memorial Institute (BMI )-owned facilities are included in this list as DOE has authorized work to be conducted at these specific locations or it has been deemed beneficial to the operations of the Pacific Northwest National Laboratory, through a series of Contracting Officer letters authorizing the reimbursement of certain costs BMI incurs in providing these facilities to the Government for its use and enjoyment. The inclusion of BMI-owned facilities into this list does not specifically address any potential costs or other liabilities by either party: it is only identified to designate authorized work locations.

Richland Map (Figure JH-1)



Sequim Map (Figure JH-2)

