

**PART III – List of Documents,
Exhibits and Other Attachments**

Section J

Appendix F

**OPERATIONAL AGREEMENT BETWEEN
THE OFFICE OF SCIENCE AND
THE OFFICE OF ENVIRONMENTAL MANAGEMENT
RICHLAND OPERATIONS OFFICE**

Revision 5

**OPERATIONAL AGREEMENT
BETWEEN
THE OFFICE OF SCIENCE
PACIFIC NORTHWEST SITE OFFICE
AND
THE OFFICE OF ENVIRONMENTAL MANAGEMENT
RICHLAND OPERATIONS OFFICE**

REVISION	EFFECTIVE DATE	DESCRIPTION OF CHANGE
0	4/7/2008	Replaced June 29, 2005, Memorandum of Agreement. Implemented requirements of PSF construction and 300 Area Building Retention Evaluation Mitigation Plan
1	7/3/2013	Updated list of PNNL-occupied 300 Area buildings, included PNNL use of the Hanford Site land management processes, included 300 Area electrical services provided by the City of Richland, and deleted items that were completed.
2	12/17/2015	Updated the agreement to reflect current operational changes that have occurred in the 300 area since 2013 and added clarification in regard to transportation management changes, receipt of the Final Record of Decision for the 300 Area, and property accounting. This revision also Includes Articles related to the 2015 Land Transfer.
3	2/14/2019	<i>Add narrative.</i> Changed structure. Added 300 Water and Sewer agreement. Added Preservation Designated Area. Revised map. Revised Table 2. Added Appendix A
4	7/28/2021	Updated the agreement to reflect current operational changes that have occurred in the 300 area since 2019, identify recent facility transfers and create appendixes for additional reference data including the creation of operating principles.
5	11/2023	Updated various parts of the FY21 Operational Agreement to reflect current administrative and operational changes that have occurred in the 300 Area since the last revision. Paragraphs edited/changed included 1, 5, 13, 20, 24, 27, 29, 31, 39, 43, 44, 45, 46 and the map of PNNL responsible space in 300A (updates were additional 325 parking lot space and approved new modular office bldg. footprint)



**OPERATIONAL AGREEMENT
BETWEEN
THE OFFICE OF SCIENCE
PACIFIC NORTHWEST SITE OFFICE
AND
THE OFFICE OF ENVIRONMENTAL MANAGEMENT
RICHLAND OPERATIONS OFFICE**

Articles of Agreement:

1. This Operational Agreement is entered into by the Office of Science (SC), Pacific Northwest Site Office (PNSO) and the Office of Environmental Management (EM), Richland Operations Office (RL) in order to define responsibilities and establish expectations, services, and interface requirements with respect to:
 - a. Pacific Northwest National Laboratory (PNNL) occupied and operated EM facilities and infrastructure located in the 300 Area on the Hanford Site, Richland, Washington.
 - b. City of Richland services to the 300 Area and other southern Hanford Site facilities and land.
 - c. EM access/use to the PNNL Richland Campus.
 - d. PNNL use of EM managed land.
 - e. Land transferred from RL to the Tri-City Development Council (TRIDEC).
2. The set of operating principles outlined in Appendix A are meant to help support a smooth transition between RL/PNSO contractors.
3. This Operational Agreement supersedes the Memorandum of Agreement (MOA) entered into June 29, 2005, between PNSO and RL (Article 4.g.) as well as the Operational Agreement between RL and PNSO, dated March 2008 (Article 4.a.). It invokes the May 24, 2007, DOE-Headquarters (HQ) MOA (Article 4.l.) addressing SC taking over operational management, funding, and oversight of four 300 Area facility complexes from EM, as well as the land reassignment agreements (Articles 4.f., 4.k., and 4.gg.). Additionally, this revision adds transportation requirements from DOE-HQ as well as requirements of the Final Record of Decision for the 300 Area (Article 4.ff.)
4. The authority for this agreement considered the following source documents (RL letter numbers are included for reference):

- a. RL memorandum to M. J. Weis, PNSO, from D. A. Brockman, "Operating Agreement between the Richland Operations Office and the Pacific Northwest Site Office," Rev. 2 dated December 17, 2015 (08-AMRC-0151).
- b. S. A. Sieracki, "Contract No. DE-AC06-96-RL13200 – 300 Area Hanford Fire Department (HFD) Responsibilities," April 07, 2009 (09-SES-0091).
- c. Deleted.
- d. DOE memorandum dated November 5, 2003 (approved by the Secretary on December 5, 2003), authorizing SC to establish PNSO (ES2003-012305).
- e. DOE memorandum dated December 9, 2003 (approved by the Secretary on January 5, 2004), authorizing SC realignment and announcement of realignment (ES2003-013451).
- f. DOE memorandum dated July 14, 2004 (approved by Milt Johnson, Deputy Director for Field Operations, SC, on August 6, 2004), assigning Cognizant Secretarial Office (CSO) responsibility for the PNNL Site to SC.
- g. RL memorandum dated June 30, 2005, from K. A. Klein to P.W. Kruger conveying Memorandum of Agreement signed June 29, 2005 (05-DEP-0015).
- h. DOE memorandum to R. L. Orbach, Under Secretary for Science, from Clay Sell, Deputy Secretary of Energy, "Approval of Revised Alternative Selection and Cost Range (CD-1 Revised) for the Capability Replacement Laboratory (CRL) Project at PNNL," dated December 15, 2006. (07-AMRC-0222).
- i. RL letter to P. L. Pettiette, Washington Closure Hanford LLC, from S. L. Sedgwick, "Transmittal of Washington Closure Hanford/Battelle Joint Approach for Delayed Release Facilities, Revision 1," dated May 22, 2006 (06-AMRC-0248).
- j. RL letter to C. G. Spencer, Washington Closure Hanford LLC, from J. Osso, "300 Area Mitigation Planning," dated February 16, 2007 (07-AMRC-0107).
- k. R. L. Orbach, Under Secretary for Science, on June 8, 2007, "Accept the Reassignment of Programmatic Control of a Parcel of Hanford Site Real Property." (2007-003271, 07-AMRC-0229).
- l. MOA between SC and EM, dated May 24, 2007, and approved June 7, 2007, and May 25, 2007, respectively. (07-AMRC-0221). Provides basis for projected 2026 departure date from 300 Area.
- m. DOE memorandum to R. L. Orbach, Under Secretary for Science, from S. W. Bodman, Secretary of Energy, "Revised Safety Functions, Responsibilities, and Authorities," dated June 22, 2007. (08-AMRC-0016).
- n. RL letter to C. G. Spencer, Washington Closure Hanford LLC, from S. L. Sedgwick, "300 Area Mitigation Planning," dated July 19, 2007 (07-AMRC-0238).
- o. DOE memorandum to Ines Triay, Assistant Secretary for Environmental Management, from G. J. Malosh, Deputy Director for Field Operations, SC, "Transfer of Safety Basis Approval Authority from EM to SC for PNNL 325 Building," dated November 15, 2007.
- p. DOE letter to Antone Minthorn, Board of Trustees, CTUIR, from R. L. Orbach and J. Rispoli, dated January 10, 2008, regarding reassignment of programmatic control of a portion of the 300 Area (Accession# DA06496613).
- q. DOE memorandum to H. B. Hathaway, Realty Officer, Richland Operations Office, from J.M. Owendoff, Chief Operations Officer, Environmental Management,

- “Payment in Lieu of Taxes (PILT) at PNNL to Benton County, Washington,” dated October 26, 2007.
- r. RL letter to C. G. Spencer, Washington Closure Hanford LLC, from S. L. Sedgwick, “300 Area Mitigation Planning,” dated April 19, 2007 (07-AMRC-0141).
 - s. RL memorandum to R. E. Snyder, PNSO, from M. McCormick, “Response to Request for Approval to Utilize City of Richland as the Electrical Services Provider for the Pacific Northwest National Laboratory (PNNL) – Operated Facilities in the Hanford Site 300 Area,” dated May 1, 2012 (12-AMMS-0010).
 - t. PNSO letter to M. Kluse, PNNL, from R. M. Kilbury. "Contract No. DEAC05-76RL01830 Approval to Utilize City of Richland as the Electrical Service Provider for the PNNL – Operated Facilities in the 300 Area,” dated June 1, 2012 (12-PNSO-0244).
 - u. PNSO memorandum to M. S. McCormick, RL, from R. E. Snyder, “City of Richland 300 area Electrical Service Project Agreement between PNSO and RL,” dated March 12, 2013 (13-PNSO-0133).
 - v. RL memorandum to R. E. Snyder, PNSO, from M. McCormick, “PNSO Line Management Safety Responsibility for the Electrical Utility Easement with the City of Richland (City) to Service the 300 Area at Hanford,” dated September 12, 2012 (12-SSD-0102).
 - w. RL letter to C. D. Johnson, City of Richland, from H. B. Hathaway, “City of Richland Easement Regarding Electrical Services to 300 Area Facilities on the Hanford Site,” dated April 11, 2013 (13-SSD-0038).
 - x. RL letter to C. D. Johnson, City of Richland from H. B. Hathaway, “Supplement to City of Richland Easement Regarding Electrical Services to 300 Area Facilities on the Hanford Site,” dated July 17, 2014 (13-SSD-0072).
 - y. RL memorandum to R. E. Snyder, PNSO, from D. S. Shoop, “Institutional Controls for the 300 Area,” dated July 1, 2014 (14-AMRP-0027).
 - z. PNSO/RL Financial Property Requirement Agreement approved April 16, 2015, between RL Finance (T. L. Toon) and PNSO (D. E. Trader) (15-FIN-0095).
 - aa. Deed between RL and TRIDEC for 1,641 acres executed September 30, 2015.
 - bb. Deeds between TRIDEC and City of Richland, Port of Benton, and Energy Northwest for the 1,641 acres.
 - cc. Final CERCLA ROD – 300-FF-1, 300-FF-2, and 300-FF-5. EPA Region 10 and RL, “Hanford Site 300 Area Record of Decision for 300-FF-2 and 300-FF-5, and Record of Decision Amendment for 300-FF-1,” November 2013.
 - dd. MOA between SC and EM, approved December 23, 2016, and January 6, 2017, respectively. Provides basis of PNNL Site reassignment of additional 85.6 acres.
 - ee. PNSO memorandum to D. S. Shoop, RL, from R. E. Snyder, “Responsibility for Operations and Maintenance of the Water and Sewer Systems in the Hanford 300 Area,” dated September 13, 2017 (17-PNSO-0344).

- ff. RL memorandum to R. E. Snyder, PNSO, from D. S. Shoop, “Responsibility for Operations and Maintenance of the Water and Sewer Systems in the Hanford 300 Area,” dated October 18, 2017 (18-ISD-0003).
 - gg. MOA between RL and PNSO Regarding the Cultural Resource Protection of the Preservation Designated Area and the Hanford Site placed into effect January 26, 2017.
 - hh. Transportation Plan for Local Radioactive Waste Shipments to and From Perma-Fix Northwest, Richland, Rev.3 (21-NSD-03152), dated November 19, 2021.
5. The PNNL Site, shown in Appendix B, is bounded on the north by the southern 300 Area fence-line extending east to the Columbia River and west to the east right-of-way line of Route 4 South; then bounded on the east by the Columbia River; bounded on the south by the south right-of-way line of Horn Rapids Road except where it connects with the Environmental Molecular Sciences Laboratory (EMSL) land and the southeast 20.79 acre parcel at the intersection of Horn Rapids and Stevens Drive, and bounded on the west by the east right-of-way line of Stevens Drive. Included in the PNNL Site is the land where EMSL (Building 3020) is located south of the Horn Rapids Road.

The PNNL Site is identified in the Facilities Information Management System (FIMS) as depicted in Table 1 (Articles 4.f, 4.k, and 4.ff).

Table 1: SC controlled PNNL Site as depicted in FIMS	
Property ID	Property Name
DRLand1	Hanford Reassignment 2004
DRLand2	Hanford Reassignment 2007
DRLand3	Hanford Reassignment 2016
DRLand4	Acquisition from BMI 2018
DRLand5	Acquisition from BMI 2019 Parcel S
DRLand6	Acquisition from BMI 2018 Parcel C
DRLand7	Acquisition from BMI 2018 Parcel Y
DRLand8	Acquisition from BMI 2018 Parcel Z
DRLand9	Acquisition from BMI 2021 Parcel L
DRLand10	Acquisition from BMI 2022 Parcel B

The reassigned land from EM to SC which is part of the PNNL Site does not affect the Comprehensive Environmental Response, Compensation, and Liability Act of 1980 (CERCLA) activities directed by regulatory documentation. The management of CERCLA cleanup of the 300 Area is the responsibility of EM/RL in accordance with the 300-FF-1, 300-FF-2, and 300-FF-5 Records of Decision and their associated CERCLA requirements (see also Operational Agreement Articles 4.q., 4.bb. and 4.ff.).

6. PNSO will allow RL and its contractors' access to lands under SC programmatic control in order to carry out CERCLA responsibilities and perform appropriate project work activities approved by PNSO and its contractor.
7. The land transferred from RL to TRIDEC in 2015 (see Appendix C), and subsequently from TRIDEC to the City of Richland, Port of Benton, and Energy Northwest, is shown in Appendix C. The deeds for transfer of this land contain covenants and restrictions to minimize the impacts to PNNL Site operations resulting from development on the transferred land. PNSO/PNNL will have the lead responsibility to monitor and enforce the covenants and restrictions related to PNSO/PNNL operations.
8. SC is the Head of Contracting Activity (HCA) for the PNNL Contract and has contract oversight responsibility to ensure contractor operations are conducted in a safe, secure, and environmentally sound manner. Additionally, SC is responsible for the PNNL Site. SC has been designated the Cognizant Secretarial Office (CSO) for the PNNL Site. PNSO (Article 4.d.) is responsible for all PNNL contractor oversight.
9. EM is the CSO for the Hanford Site. RL is responsible for ensuring EM-cognizant activities are performed safely (e.g., remedial activities set forth in the 300 Area CERCLA ROD).
10. RL and PNSO shall ensure the Interface Control Document (ICD) for 300 Area Utility Systems and Services is updated to reflect changes in statements of work between DOE contractors. The ICD provides for the maintenance of government owned facilities, land, and infrastructure, and will include agreed upon physical "boundaries" for facilities and infrastructure and defines specific roles, responsibilities, authorities, and accountabilities for the prime contractors and their subcontractors regarding utilities, services, and general administration of government- owned land and facilities.
11. The facility data records in FIMS for the PNNL-occupied 300 Area buildings, mobile office trailers, and Other Structures and Facilities (OSF) will reflect PNNL as the Site-Area, EM as the owning Program Office, and SC as the operating/mission dependent program. PNSO and its contractor will keep these facility data records current in the FIMS database. PNSO and its contractor will notify RL of modifications/betterments planned for the PNNL-occupied 300 Area buildings. When the value and status of real property changes, PNSO and its contractor will provide RL with the approved transfer voucher document to update the Standard Accounting and Reporting System (STARS) records. PNSO will provide RL an annual estimated property valuation Report every January. (See Reference 4.cc. for clarification).
12. RL will be responsible for the disposition of accountable (tracked) EM personal property that is located in the 300 Area buildings occupied by PNNL. This liability is documented in the RL Financial Statement and those systems that feed it (property management system, etc.). Both EM accountable (tracked) and non-accountable (non-tracked) property to be dispositioned will be turned over to the appropriate RL contractor before

or on the date the buildings are turned over. PNSO shall not relocate waste from PNNL-occupied 300 Area buildings into buildings being turned over to RL unless authorized under appropriate CERCLA documentation and with RL concurrence. SC personal property will remain PNSO's responsibility for final disposition.

13. During PNNL's occupation of facilities in the 300 Area, PNSO is responsible for the disposition of all discrete nuclear material. Legacy hold up material will be transferred to the appropriate RL contractor upon facility turnover. Prior to the conclusion of PNNL's occupation of a 300 Area facility PNSO and RL shall conduct walkthroughs/inspections to determine the appropriate disposition of items not attached to the structure of the facility. Packaged waste shall be removed from the facility prior to the conclusion of PNNL occupancy.
14. PNSO has been delegated the Nuclear Safety basis approval authority under 10 CFR 830 Subpart B for the Hanford Building 325 as authorized by Article 4.o.
15. At the end of PNNL occupancy, PNSO will transition the PNNL-occupied/operated 300 Area EM-owned facilities, infrastructure, and waste sites listed in Appendix D, to RL for demolition and cleanup, (Article 4.1.). SC is interested in operational responsibility of the 318 Yard when no longer needed by EM. For most facilities and infrastructure, PNNL occupancy and use to support the SC mission is anticipated to extend beyond 2045.
16. PNSO has line management safety responsibility and oversight, including maintenance, betterments, and operations for all PNNL-occupied/operated 300 Area facilities, infrastructure, and waste site assignments identified in Appendix D and within the facility and infrastructure boundaries as discussed in Article 10. PNSO is responsible and accountable for approval, compliance, and oversight associated with the requirements contained in 10 CFR 835, 10 CFR 850, and 10 CFR 851 in areas and facilities identified in Appendix D and for the area under easement for the City of Richland 300 Area electrical services. Roofing must be in good condition of repair and all electrical/utility and other systems needed to maintain compliance with environmental or safety requirements must be in working condition prior to transitioning of facilities from PNNL occupation to RL.
17. RL will provide utilities/services and necessary infrastructure to support the PNNL-occupied EM facilities and SC property in the 300 Area, unless some other mutually agreed to utility/service arrangement is established and summarized within a revised Operational Agreement (see Articles 18, 19, 20, and 21). RL, PNSO, and PNNL will interface for risk identification on the networks and systems on those Information Technology sources which share trusted relationships.
18. Starting in FY22, 300 Area utilities and services will be provided through subcontracts in accordance with the articles listed in Appendix A.

19. RL and PNSO agree to utilize the City of Richland electrical services for all long-term facilities and capabilities in the 300 Area and have approved the 300 Area Electrical Service Project Agreement for the transition, operation, and closeout of electrical services. (Article 3.v.) This agreement will be maintained and managed separately from this Operational Agreement. PNSO will perform line management responsibility and oversight for occupational health and safety regarding the City of Richland provided electrical utility services to the 300 Area, including oversight for its associated RL established easement. (Articles 4.w., 4.x., and 4.y.) PNSO will maintain the City of Richland 300 Area Electrical Services Interfaces and Responsibilities Agreement.
20. RL and PNSO agree that PNSO will be responsible for the operation and maintenance of the 300 Area water and sewer systems, including renewal of the CR-IU010 permit, and required reporting. Long-term responsibility and liability for both systems shall remain with RL as dictated in reference 4.hh and as noted in Appendix D.
21. PNSO will operate and maintain the 300 Area natural gas system with system ownership and long-term responsibility and liability remaining with RL. 300 Area natural gas system will continue as an EM owned system. PNNL will provide service to all DOE contractors in the 300 Area and specifically to itself to support the SC/PNNL mission and will allocate cost in accordance with Article 18.
22. RL will provide maintenance and snow removal only for Cypress Street (between Stevens Drive and the 331 Building) and George Washington Way Extension (between Cypress and George Washington Way). PNSO shall be responsible for road and parking lot maintenance and snow removal for all other areas supporting PNNL occupied facilities.
23. For the portion of the PNNL Site that is annexed into the City of Richland, the City has responsibility for fire and ambulance response. For the un-annexed portion of the PNNL Site, as well as the Hanford Site 300 Area, RL currently maintains responsibility for fire and ambulance response, until such time the service provider changes (4.b.).
24. PNSO will continue to receive supplementary protective force services from RL, with full cost recovery. This service will be reviewed by RL/PNSO annually and RL will provide PNSO with sufficient advanced notice prior to any changes. Because both RL's and PNSO's contractors have their own protective force, the roles, responsibilities, authorities, and expectations associated with the collective protective force services are as follows:
 - a. Pursuant to PNSO Manager's authority, PNNL will perform alarm response to national security assets housed in PNNL facilities located off the Hanford Site (i.e., PNNL facilities within the City of Richland).
 - b. Pursuant to RL Manager's authority, the RL contractor responsible for Hanford Site security will: 1) Perform alarm monitoring (of alarm points that terminate at the Hanford Patrol Operations Center and/or Central Alarm Station) and notifications for both national security assets.

- housed in PNNL facilities within the City of Richland and PNNL-operated facilities located in the 300 Area on the Hanford Site. Alarm monitoring services provided for PNNL facilities within the City of Richland will be at full cost recovery; 2) perform alarm response (within required timeframes) to national security assets housed in PNNL-operated facilities located at the 300 Area; 3) provide alarm reports and documentation, as requested; and 4) support alarm response performance testing, as required, but no less than annually.
- c. RL's Hanford Site security contractor will perform off-shift exterior check of PNNL-operated facilities located in the 300 Area.
 - d. If available, RL's Hanford Site security contractor will provide K-9 response to security events/incidents that occur at PNNL-operated facilities located in the 300 Area.
 - e. RL's Hanford Site security contractor and the PNNL contractor will maintain an interface agreement outlining the details associated with the aforementioned protective force services.
 - f. Upon request, the parties agree to provide copies of their respective contractors' performance tests results, post orders, and procedures in order to evaluate contractor performance.
25. PNSO and its contractor will be responsible for energy and water cost and consumption data reporting, and energy conservation performance reporting for buildings, mobile office trailers and other structural facilities under the responsibility of PNSO and its contractor.
26. PNSO will be responsible for assessing, maintaining, and upgrading the electric, natural gas, and water metering of its occupied/operated 300 Area buildings against the requirements and goals of the Energy Policy Act.
27. Transportation safety roles, responsibilities, authorities, and expectations are as follows:
- a. The applicable RL contractor shall provide motor carrier services in support of PNSO onsite and limited commerce (offsite) transportation activities, as needed.
 - b. The applicable RL contractor shall provide packaging and transportation (P&T) support for radioactive/mixed waste freight when containers exceed the Department of Transportation (DOT) Type A quantities, per the Hanford Site Transportation Safety Document (TSD).
 - c. PNSO's contractor will follow the TSD to prepare waste (hazardous, radioactive, or radioactive/mixed) for onsite transportation. This shall include but not be limited to shipper/receiver agreement documents, transportation documents for packaging/transportation/and receipt by the receiving facility for DOT compliant shipments. The applicable RL contractor's P&T shall prepare transportation documents for non-DOT compliant shipments.
 - d. The applicable RL contractor shall enact on behalf of PNSO's contractor the Transportation Plan documented in the DOT Special Permit for activities involving local offsite waste shipments in support of PNSO.

- e. RL-provided services will be on a cost recoverable basis using allocation compliant with Cost Accounting Standards that are commensurate with the level of service received.
28. PNSO will provide its own Defense Nuclear Facilities Safety Board Liaison.
29. For the PNNL-occupied 300 Area EM facilities, PNSO and its contractor will comply with the provisions of the Hanford Emergency Management Plan (DOE/RL-94-02) and the DOE-0223 emergency plan implementing procedures and receive service from and provide input to the applicable RL contractor. RL will develop, implement, and maintain the Hanford Site emergency management program and will provide sufficient time to coordinate key program decisions and/or policy changes with PNSO prior to implementation. PNSO will facilitate efforts with RL to ensure its contractor is able to confirm the demonstration and evaluation of the integrated emergency response capabilities of all site-level emergency response elements and resources that are implemented by the RL contractor as part of the Hanford Site emergency management program. Emergency Planning Hazards Assessments and Hazards Surveys will be approved by PNSO, with concurrence of RL. PNSO will provide representatives of the Hanford Site Emergency Preparedness planning and coordinating functions.
30. RL will recognize Pacific Northwest Office Local Site Specific Only (LSSO) badges. Pacific Northwest Office LSSO badge templates must be approved by RL prior to any changes. The badges shall be issued and managed in accordance with the DOE directives and the approved policies and procedures established by RL. PNSO/PNNL will minimize personnel accessing the Hanford Site barricades to employees and subcontractors that have a work function north of the Wye barricade or are participating in an official tour.
31. PNSO shall, with coordination and adequate preparation, allow service-providing contractors access to PNNL-occupied buildings in the 300 Area to perform infrastructure related services. PNSO will be responsible for ensuring weed control activities are carried out within the PNNL use/expanded use areas identified in Appendix B to ensure the presence of unwanted vegetation is kept at a minimum.
32. For activities in PNNL-occupied EM facilities, PNSO's contractor will submit all PNNL requests to obtain or modify any necessary licenses, approval orders, and permits on which RL is a signatory, to RL in a timely manner for transmission to the appropriate regulator. Direct communications with external regulatory agencies in non-routine matters will be coordinated with the appropriate DOE office. Notification of emergencies and other required reporting relating to off-normal situations (e.g., spills) will be done by PNSO's contractor, which will notify RL immediately after the emergency or other notification. Per the PNNL Contract, the contractor is required and will continue to establish and maintain routine technical interfaces with the regulators. RL regulatory, environmental, and permit services will be on a cost recoverable basis using allocation methodologies compliant with CAS that are commensurate with the level of service received.
33. PNSO and its contractor shall comply with applicable conditions and provisions of the Hanford Site Comprehensive Land Use Environmental Impact Statement, applicable National Environmental Policy Act (NEPA) supplement analyses, as well as the 300-FF-

l, 300-FF-2, and 300-FF-5 Final Record of Decision (as well as any amendments or Explanations of Significant Differences) and will implement them through PNSO and its contractor's policies and procedures. PNSO and its contractor shall be responsible for performing the annual assessments of the Institutional Controls associated with the remediated areas within their responsibility per the schedule established by RL and its contractor and coordinating with RL and its contractors to incorporate the information into the *Annual Sitewide Institutional Control Assessment Report*.

34. PNSO and its contractor will operate, maintain, and be responsible for providing all needed support for PNNL-occupied EM facilities, including, but not limited to, waste management and environmental requirements for operation. PNSO agrees to pay the increased remedial action cost resulting from a release of hazardous pollutants to the environment from SC sources (e.g., facilities, operations) during continued occupancy in the 300 Area. (Article 4.l.) RL is responsible for Payment in Lieu of Taxes (PILT) to Benton County, Washington for DOE land (Article 4.k., 4.r., and 4.gg.).
35. RL has responsibility for the maintenance, repair, use, and funding of the reactor compartment haul road. RL agrees that there will be no modifications to the size of the haul road within the Preservation Designated Area. RL and PNSO agree that any modification to the portion of the haul road that traverses the PNNL Richland Campus which would result in changes to the size, direction, or location of the haul road will require both parties' approval. RL will notify the PNNL Security Office at (509) 372-2400 or email to ^Patrol Operations, prior to any planned use of the haul road. PNSO will not authorize any utility or facility interferences that will affect operation of this haul road without acquiring RL's prior approval.
36. RL and PNSO are independently responsible for compliance with DOE O 436.1 Departmental Sustainability, DOE O 458.1, Radiation Protection of the Public and the Environment (limited to sections listed in the Battelle Memorial Institute contract); the National Environmental Policy Act (NEPA), and the National Historic Preservation Act (NHPA), among other laws and DOE Orders. Unless specifically discussed within this agreement each office is responsible for compliance with any and all environmental regulations within areas of their direct management oversight. Regarding compliance with environmental regulations, the activities of PNSO and its contractor on the Hanford Site will be coordinated with the appropriate RL environmental program manager. PNSO and its contractor will receive service from and provide input to the appropriate RL contractor, in a timely manner at no cost to RL, for activities on the Hanford Site as follows:
 - a. Provide input for the Site-wide Environmental Management System (EMS) Program Management Plan.
 - b. Integrate their environmental permitting and regulatory compliance activities with Hanford site-wide permitting and compliance framework maintained by the appropriate RL contractor. Obtain unit specific permit modifications in coordination with the appropriate RL contractor.
 - c. Provide appropriate and timely input to the appropriate RL contractor for regulatorily required site-wide environmental reports and metrics for their facilities and activities. Note: PNNL Site data is not included in the environmental data

- provided for Hanford Site Reporting.
- d. Support the appropriate RL contractor in their site-wide environmental regulatory management roles.
 - e. Provide legal and regulatorily required air emission and liquid effluent monitoring and collect, compile, and/or integrate air emission and liquid effluent monitoring data from facility operations and activities under their control.
 - f. Receive legal and regulatory required National Historic Preservation Act (NHPA), Migratory Bird Treaty Act (MBTA), and Endangered Species Act (ESA) documentation from the appropriate RL contractor for projects and facility operations if sponsored by RL. Provide appropriate environmental data for its facilities to support Hanford Site assessments and preparation of the annual Hanford Site Environmental Report.
37. For activities/work not addressed by this agreement and for which PNSO and its contractor would like to use the Hanford Site, PNSO's contractor will submit a completed Site Evaluation Form to RL's contractor. The requirements listed below will be followed when submitting/approving a proposed land-use request. These requirements are not applicable for work sponsored by RL, the DOE Office of River Protection, or their contractors. Approval for such work will be addressed through appropriate work authorization mechanisms (i.e., Inter-Entity Work Order process between RL and PNSO, etc.).
- a. PNSO will endorse/pre-screen its contractors' proposed activities to identify potential adverse impacts on the Hanford Site, as well as to provide any necessary information for disposition/mitigation of identified adverse impacts to the following:
 - i. Tri-Party Agreement commitments
 - ii. Hanford Site missions or site operations
 - iii. Hanford Site-wide Air Permit for Toxic Air Pollutants (TAPs), National Ambient Air Quality Standards (NAAQS), and the Hanford Site Radioactive Air Emissions License, #FF-01
 - iv. Nuclear Safety (Authorization Basis and Safety Documents for 324 and 325)
 - v. Hanford and DOE Mission initiatives
 - vi. Hanford Site Comprehensive Land-Use Plan land-use designations, definitions, policies, and implementing procedures
 - vii. Ecological, cultural, and natural resources
 - viii. Environmental impacts (NEPA review)
 - ix. Occupational health and safety requirements
 - x. Security requirements
 - xi. Emergency management requirements and services
 - xii. Hanford Site fire management requirements and services
 - xiii. Infrastructure and capacities
 - xiv. Risk associated with onsite and use of hazardous materials and radiological sources
 - xv. Hanford Facility RCRA permit
 - xvi. Tenants located on the Hanford Site
 - xvii. Adjacent landowners

- b. Upon receipt of a land-use request, RL will initiate an internal site evaluation review. RL may deny the request if unacceptable impacts to the RL cleanup mission responsibilities or mission support activities, the Hanford Reach National Monument, the Manhattan Project National Historical Park, or tenants located on the Hanford Site are identified, or if the proposed activity is otherwise determined not to be appropriate for conduct on the site. In situations where it appears the request may be denied, RL and PNSO will have the opportunity to engage in additional discussions and will include contractors as necessary.
 - c. Upon RL approval, the RL contractor will provide an approved Site Evaluation Form to PNSO and its contractor. Said approval will be contingent upon the fact that PNSO will continue to have line management responsibility for all aspects of the work including, but not limited to the following:
 - i. Work authorization and budget
 - ii. Ensure work on the project does not extend beyond the original scope that was approved
 - iii. Comply with all applicable Hanford environmental permits, the acquisition of new permits if necessary, responsibility for any environmental impacts, etc.
 - iv. Comply with the Hanford Site Comprehensive Land-Use Plan and associated Resource and Area Management Plans
 - v. Comply with ecological and cultural resource reviews
 - vi. Comply with the National Environmental Policy Act (NEPA)
 - vii. Comply with the Hanford Site Emergency Preparedness program
 - viii. Comply with security badging and site access
 - ix. Comply with other applicable site wide requirements
 - x. Comply with requirements identified through the Site Evaluation process
 - d. PNSO's contractor will notify the RL contractor when work on the Hanford Site has concluded and will add the project to the list and map maintained by RL's contractor of PNNL activities conducted on the Hanford Site.
 - e. PNSO and its contractor must return the property to its original state, unless otherwise agreed. RL and its contractor may inspect the property to verify it has been returned to the agreed-upon state.
 - f. PNSO and its contractor will be responsible for following the applicable requirements of DOE-0344, *Hanford Site Excavating, Trenching & Shoring Procedure*, and complying with the Site Excavation Permit Application process for its work conducted on the Hanford Site.
38. RL and PNSO and their contractors shall ensure compliance with Washington State Waste Discharge Permit number ST-4511. RL and PNSO and their contractors shall also ensure compliance with Hanford 300 Area Industrial Wastewater Permit No. CR-IU010 as issued by the City of Richland for their respective occupied facilities within the 300 Area. RL and PNSO and their contractors shall work together to mitigate or correct improper discharges into the system prior to the point of compliance.

39. Preservation Designated Area:

- a. RL and PNSO agree to cooperatively manage the area hereby referred to as the Preservation Designated Area (PDA) in accordance with the *Memorandum of Agreement Regarding the Cultural Resource Protection of the Preservation Designated Area and the Hanford Site* attached by reference in Article 4.jj.
- b. PNSO is responsible for noxious weed control activities.
- c. Per stipulations found in the Richland Campus Future Development Memorandum of Agreement PNSO shall:
 - i. RL is responsible for maintaining both existing and any new fencing and signage.
- d. RL is responsible for PDA access controls and response to security events within the PDA.

40. PNSO and RL have agreed that the RL Labor Standards Board will make the determination whether PNNL Plant Force Work Reviews will be covered by the Davis-Bacon Act. The Board will continue to include one representative from PNSO.

41. Waste packages procured from RL shall be in a condition that would be acceptable for use and storage at CWC. Any waste packaging that is not in an appropriate undamaged state, as determined by PNSO, shall be returned, and exchanged.

42. PNSO and RL agree that PNNL waste packages will be provided to RL in a state that is acceptable for their long-term storage, in accordance with the Hanford WAC and the WIPP WAC. This means that the payload container in good and unimpaired condition, 1) does not have significant rusting, 2) is of sound structural integrity, and 3) does not show signs of leakage. Significant rusting is a readily observable loss of metal due to oxidation (e.g., flaking, bubbling, or pitting) that causes degradation of the payload container's structural integrity. Rusting that causes discoloration of the payload container surface or consists of minor flaking is not considered significant.

- a. Should PNSO provide packages that do not meet these requirements PNSO will be responsible for returning them to an acceptable state.

43. PNSO and RL agree that if waste packages are submitted to RL in an acceptable condition, as stated in stipulation 42, any degradation the packages suffer through exposure to the environment, that is due to the inability of RL contractors to approve, ship, or accept packages, shall be RL's responsibility to remedy/repair, excluding weather delays or change to the accepted waste packages after approval and

- a. Packages shall be approved within 45 days of submittal.
- b. Packages shall be scheduled for shipment within 90 days of package approval.

This Operational Agreement shall be effective upon the signature of all parties. The Operational Agreement may be modified or amended by the mutual agreement of the parties. The Operational Agreement will expire on September 30, 2046, unless otherwise extended by both parties.

APPROVED:

Julie K. Turner Digitally signed by Julie K. Turner
Date: 2024.05.06 15:26:43 -07'00'

Julie Turner , Manager Date
Pacific Northwest Site Office

Brian T. Vance Digitally signed by Brian T.
Vance
Date: 2024.04.25 09:20:23 -07'00'

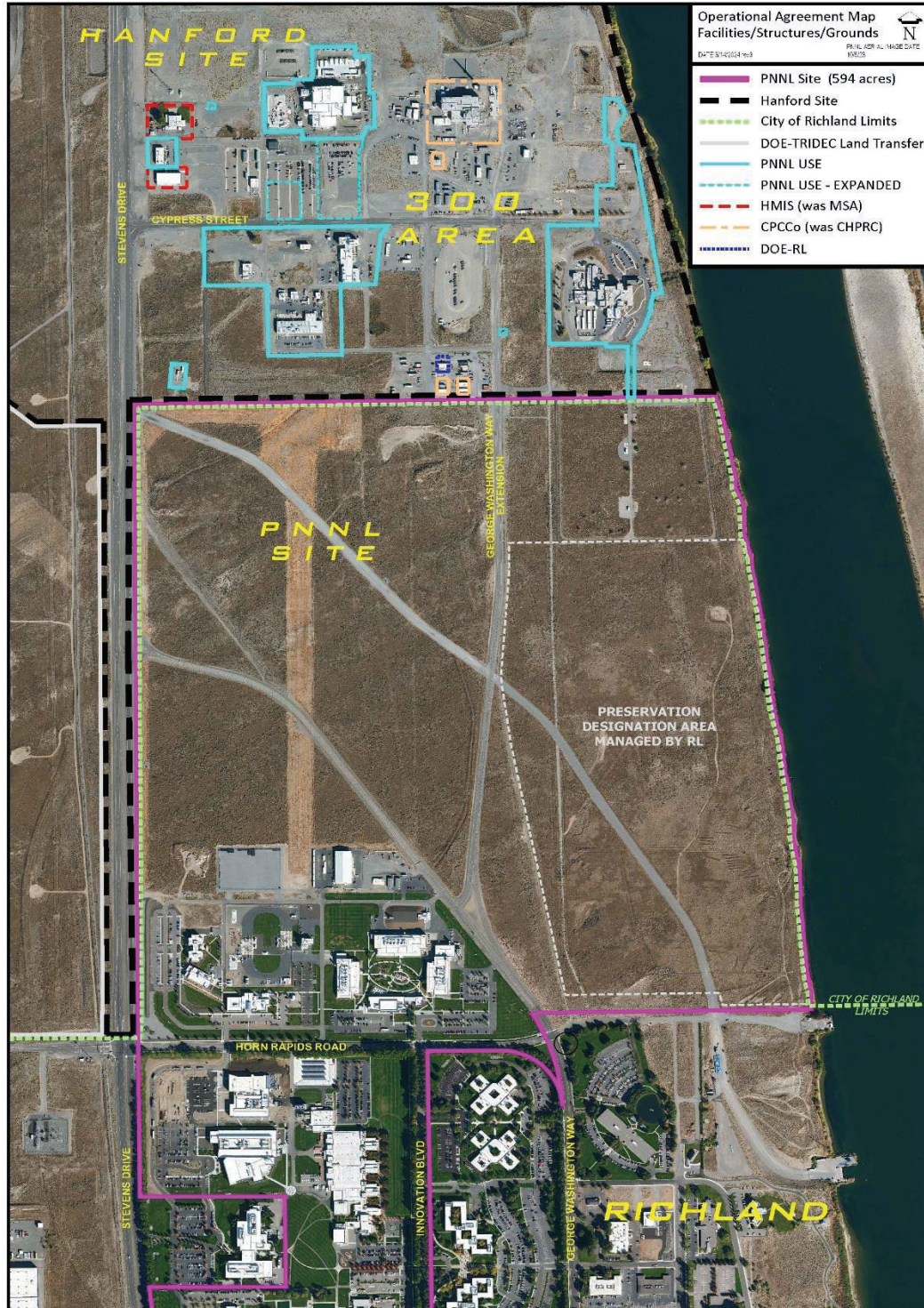
Brian T. Vance, Manager Date
Richland Operations Office/
Office of River Protection

Appendix A - Operating Principles

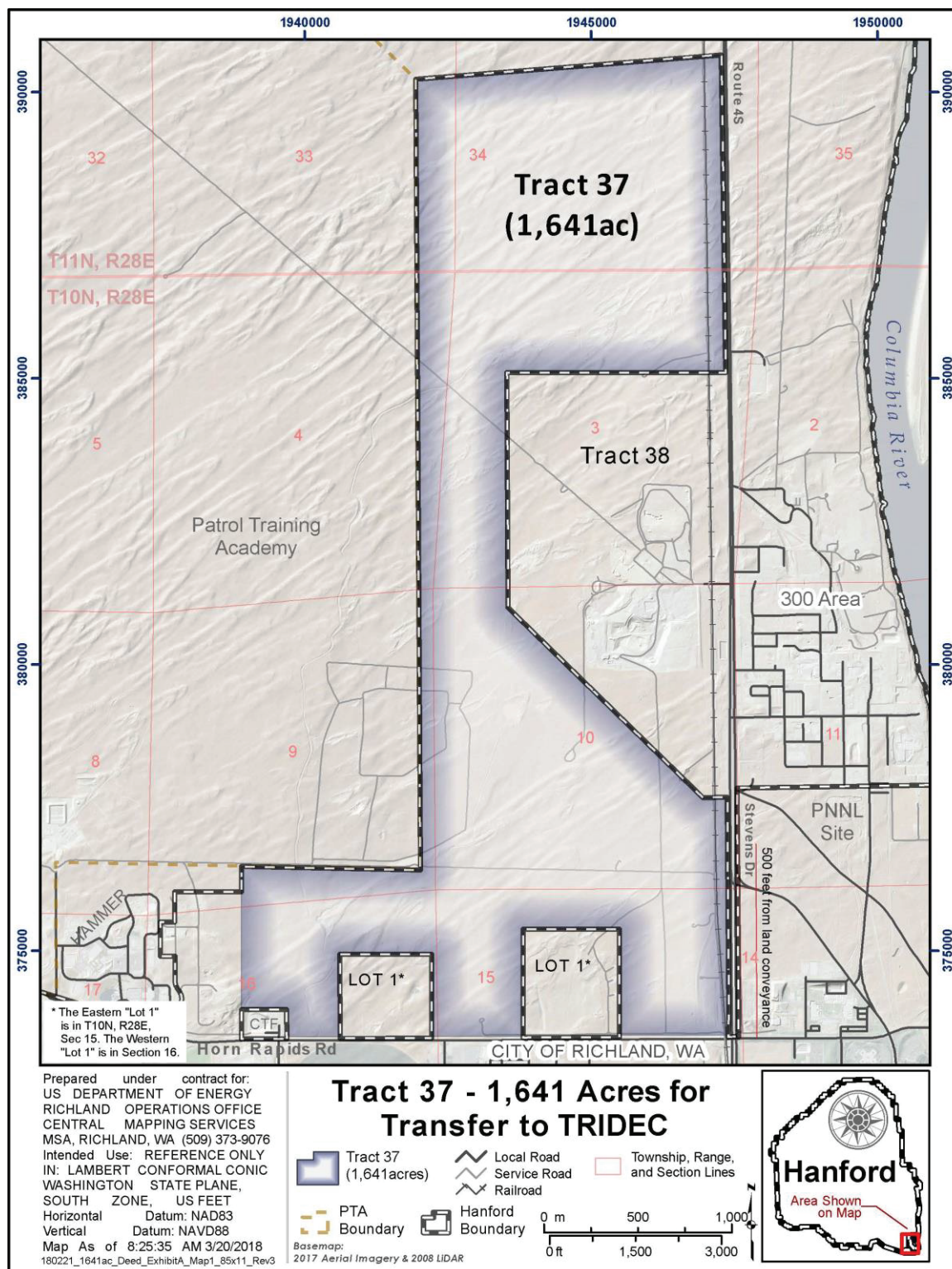
1. Contractors will have subcontracts in place for services provided to each other.
2. The Operations Agreement between RL/ORP and PNSO will be added as appendices to each contractor's prime contract.
3. PNNL will no longer be a part of any site service allocation and its costs/prices will be excluded from the base.
4. Services will continue as previously provided and will be reimbursed under the IWO until such time as a subcontract is executed by both parties.
5. A 180-day notice of termination of services shall be provided. Termination of services requires concurrence of DOE (RL/ORP/PNSO).
6. Contractors will at a minimum estimate cost (review pricing and quantity) annually no later than June of each year, for implementation the following year to assure stable budgeting environments.
7. As contractor-to-contractor services may involve labor, commodities, consumables, and improvements, in use or to be employed regularly or in emergent/reactive situations, authorization mechanisms, notice timelines, and any consultation processes must be clearly defined.
8. Given appropriation differences, it is essential that the full needs of all missions be covered without augmentation.
 - a. Subcontracts are subject to Cost Accounting Standards, the contractors approved disclosure statements and each contractor is subject to review and audit to ensure a defensible cost basis. Contractual pricing information will be made available, or a basis of estimate will be provided for any resulting subcontract and any associated distribution base.
 - b. any differential or additive cost associated with the work scope must be recovered.
 - c. If the service is proportionally sized and expensed, then the cost base must be all inclusive of those receiving the service to be CAS compliant.
9. All costs must be resolved prior to the closing of each contractors' books for the fiscal year.
10. Any predicted annual cost or price variance (+/- 10%) will be communicated to the affected contractor within 30 days of detecting the change.
11. Contractors are required to provide notification within 10 days of expending funds that exceed 75% of the total costs estimated for the service provided.
12. Prior appropriation transfer agreements remain unchanged (e.g., Hanford Patrol).

13. Contractors will follow their respective general provisions from their prime contract and will not flow down any general provisions to the serviced contractor.
14. If contractors are unable to resolve an issue, RL and PNSO leadership will engage to jointly resolve. If unresolvable locally, HQ SC and EM will be engaged.

Appendix B – General Area of this Operational Agreement



Appendix C - TRIDEC Map



Appendix D - PNNL-Occupied/Operated Facilities, Structures, Infrastructure, and Waste Site
Assignments in the 300 Area

PNNL-Occupied/Operated Facilities, Infrastructure, and Waste Site Assignments in the 300 Area			
Building Complex	Facility Number	Owner / Property Type	Facility Name / Description
325	325*	EM Building	Radiochemical Processing Laboratory
	325A	EM Building	Cesium Recovery Facility (part of 325)
	325B	EM Building	Shielded Lab Annex (part of 325)
	325C	EM Building	Fluorine Gas Storage (part of 325)
	325D	EM Building	Maintenance Shop Addition (part of 325)
	325NSPad*	EM Other Structure	North Storage Pad for 325 Complex (328/328A/3714 Concrete Slabs)
	325WSPad*	EM Other Structure	West Storage Pad for 325 Complex (329 Concrete Slab)
	325	EM Other	Stormwater Runoff; Miscellaneous Stream #408
	325	EM Other	Stormwater Runoff; Miscellaneous Stream #791
	325	EM Other	Stormwater Runoff and Fire System Testing Water; Miscellaneous Stream #706
	325	EM Other	South Stairwell Drain; Miscellaneous Stream #264; 300-229
	325	EM Other	Building Nitrogen Tank Blowdown Miscellaneous Stream #265; Injection Well #399-3
	325	EM Other	Hazardous Waste Treatment Units; 325 Waste Treatment Facility
331	331*	EM Building	Life Sciences Laboratory
	331Pad*	EM Other	331 Pad
	331	EM Other	Steam Condensate; Miscellaneous Stream #513; Pit U1
	331	EM Other	Steam Condensate; Miscellaneous Stream #574
	331	EM Other	Stormwater Runoff; Injection Well #32; Miscellaneous Stream #447
	331	EM Other	Stormwater Runoff; Injection Well #37; Miscellaneous Stream #448
318	318*	EM Building	Radiological Calibrations Laboratory
	318B	EM Building	High Temperature Lattice Test Reactor Filter Stack (concrete pad) (part of 318)
	318C	EM Building	High Temperature Lattice Test Reactor Filter Facility (concrete pad) (part of 318)
	318	EM Other	Stormwater Runoff; Miscellaneous Stream #792

	318	EM Other	Stormwater Runoff; Miscellaneous Stream #793
318Yard	TBD	EM Other	318 Storage Yard (official record TBD)
350	350*	EM Building	Plant Operations and Maintenance Facility
	350A*	EM Building	Paint Shop
	350B*	EM Building	Warehouse
	350C*	EM Building	Storage Facility
	350D*	EM Building	Oil Storage Facility
	350	EM Other	350 HWSA; 350-D Hazardous Waste Staging Area; 350 Building Hazardous Waste Storage Area
361	361*	SC Modular Building	Modular Equipment Shelter
3236	3236	SC Modular Building	300A Office building
312	312*	EM Building	River Pump House and Monitoring Station (312/3614A)
339A	339A*	EM Building	Telecommunications
3220	3220*	EM Building	Telecommunications/Records
385	385*	EM Building	Sanitary Water Pump House
300 Area Water and Sewer Systems	WATER3*, SEWER3*, 3906C, 3906DSLS 3906ESLS3906FSLS 318SLS3212SLS 350SLS 685 686	All Others – EM Other Structures	300 Area Water and Sewer Systems consisting of various infrastructure
Waste Site Assignments**	350 HWSA	EM Other	350-D Hazardous Waste Staging Area at 350 Building
	300-100	EM Other	300-100; 325 Building Stormwater Runoff; Miscellaneous Stream #408
	300-105	EM Other	300-105; 331 Building Steam Condensate; Miscellaneous Stream #513; Pit U1
	300-106	EM Other	300-106; 331 Building Steam Condensate; Miscellaneous Stream #574
	300-107	EM Other	300-107; 331 Building Stormwater Runoff; Injection Well #32; Miscellaneous Stream #447
	300-108	EM Other	300-108; 331 Building Stormwater Runoff; Injection Well #37; Miscellaneous Stream #448
	300-242	EM Other	300-242; 325 Building Stormwater Runoff; Miscellaneous Stream #791
	300-243	EM Other	300-243; 318 Building Stormwater Runoff; Miscellaneous Stream #792
	300-244	EM Other	300-244; 318 Building Stormwater Runoff; Miscellaneous Stream #793

	300-97	EM Other	300-97; 325 Building Stormwater Runoff and Fire System Testing Water; Miscellaneous Stream #706
	300-98	EM Other	300-98; 325 Building South Stairwell Drain; Miscellaneous Stream #264; 300-229
	300-99	EM Other	300-99; 325 Building Nitrogen Tank Blowdown Miscellaneous Stream #265; Injection Well #399-3
	325 WTF	EM Other	325 WTF; 325 Hazardous Waste Treatment Units; 325 Waste Treatment Facility
	300-99	EM Other	300-99; 325 Building Nitrogen Tank Blowdown Miscellaneous Stream #265; Injection Well #399-3
*Specifically identified in FIMS			
**Specifically identified in Section J.14, Hanford Waste Site Assignment List, in RL's Prime Contracts			