
**Pacific Northwest
National Laboratory**

Operated by Battelle for the
U.S. Department of Energy

Model for TCLP Releases from Waste Glasses

D.-S. Kim
J. D. Vienna

September 2002

Prepared for the U.S. Department of Energy
under Contract DE-AC06-76RL01830



DISCLAIMER

This report was prepared as an account of work sponsored by an agency of the United States Government. Neither the United States Government nor any agency thereof, nor Battelle Memorial Institute, nor any of their employees, makes **any warranty, express or implied, or assumes any legal liability or responsibility for the accuracy, completeness, or usefulness of any information, apparatus, product, or process disclosed, or represents that its use would not infringe privately owned rights.** Reference herein to any specific commercial product, process, or service by trade name, trademark, manufacturer, or otherwise does not necessarily constitute or imply its endorsement, recommendation, or favoring by the United States Government or any agency thereof, or Battelle Memorial Institute. The views and opinions of authors expressed herein do not necessarily state or reflect those of the United States Government or any agency thereof.

PACIFIC NORTHWEST NATIONAL LABORATORY
operated by
BATTELLE
for the
UNITED STATES DEPARTMENT OF ENERGY
under Contract DE-ACO6-76RLO1830

Printed in the United States of America

Available to DOE and DOE contractors from the
Office of Scientific and Technical Information,
P.O. Box 62, Oak Ridge, TN 37831-0062;
ph: (865) 576-8401
fax: (865) 576-5728
email: reports@adonis.osti.gov

Available to the public from the National Technical Information Service,
U.S. Department of Commerce, 5285 Port Royal Rd., Springfield, VA 22161
ph: (800) 553-6847
fax: (703) 605-6900
email: orders@ntis.fedworld.gov
online ordering: <http://www.ntis.gov/ordering.htm>



This document was printed on recycled paper.

Model for TCLP Releases from Waste Glasses

D.-S. Kim
J. D. Vienna

September 2002

Prepared for the U.S. Department of Energy
under Contract DE-AC06-76RL01830

Pacific Northwest National Laboratory
Richland, Washington 99352

Abstract

A first-order property model for normalized Toxicity Characteristic Leaching Procedure (TCLP) release as a function of glass composition was developed using data collected from various studies. The normalized boron release is used to estimate the release of toxic elements based on the observation that the boron release represents the conservative release for those constituents of interest. The current TCLP model has two targeted application areas: (1) delisting of waste-glass product as radioactive (not mixed) waste and (2) designating the glass wastes generated from waste-glass research activities as hazardous or non-hazardous. This report describes the data collection and model development for TCLP releases and discusses the issues related to the application of the model.

Summary

Table S.1 summarizes model coefficients, standard errors, model statistics, and model validity range in mole fraction of 14 components for the TCLP normalized B release (r_B) model developed in this study.

Table S.1. Model Coefficients and Validity Range for the Normalized B Release (r_B) by TCLP

Component	TCLP r_B Model		Validity Range, Mole Fraction	
	$\ln(r_{B,i}, \text{mg/L})$	Std Error	Minimum	Maximum
Al ₂ O ₃	-11.830	1.637	0.0000	0.1296
B ₂ O ₃	14.155	0.767	0.0165	0.2217
CaO	14.266	0.982	0.0000	0.2269
Fe ₂ O ₃	-9.869	2.027	0.0000	0.0845
K ₂ O	29.025	2.465	0.0000	0.1097
Li ₂ O	10.456	0.937	0.0000	0.2051
MgO	12.980	1.032	0.0000	0.1960
Na ₂ O	18.440	0.874	0.0000	0.2581
SiO ₂	-1.270	0.358	0.3331	0.6458
ZrO ₂	-10.114	2.685	0.0000	0.0908
LN ₂ O ₃	-98.649	7.577	0.0000	0.0231
MnO _x	15.308	6.942	0.0000	0.0795
SrO	8.975	5.238	0.0000	0.1023
Others	9.696	1.116	0.0004	0.1685
Model statistics			Validity Range for r_B (mg/L)	
Number of Glasses	231		Minimum r_B	Maximum r_B
R ²	0.870		7.21	3790.57
R ² (Adjusted)	0.862			
s (RMSE)	0.5825			

Note: Normalized boron release by TCLP is calculated using the formula:

$$\ln[r_B] = \sum_{i=1}^N r_{B,i} x_i \quad (\text{S.1})$$

where x_i is the mole fraction of i -th component in glass, $r_{B,i}$ is the model coefficients for i -th component, and N is the number of components. Then, the TCLP release of each RCRA element (c_i , mg/L) is calculated by the relation:

$$c_i = r_B f_i \quad (\text{S.2})$$

where f_i is the mass fraction of i -th element in glass.

Acronyms

ASTM	American Society for Testing and Materials
EPA	U.S. Environmental Protection Agency
FR	Federal Regulations
HLW	high-level waste
LANL	Los Alamos National Laboratory
LAW	low-activity waste
LDR	land-disposal restrictions
PCT	product consistency test
PNNL	Pacific Northwest National Laboratory
RCRA	Resource Conservation and Recovery Act
RMSE	root mean square error
TCLP	Toxicity Characteristic Leaching Procedure
UTS	universal treatment standard

Acknowledgments

The authors are grateful to Steve Lambert, Kami Baisch, Gregg Bartel-Bailey, Kim Fowler, Scott Cooley, and Bob Daubt for helpful discussions and suggestions; Connie Cicero-Herman for supplying Savannah River Technology Center data; Ian Pegg for supplying Vitreous State Laboratory Data; Wayne Cosby for careful editing; and SK Sundaram, David Blumenkranz, Bill Holtzscheiter, and Jacob Reynolds for careful review of the report and helpful comments. This work was performed at the Pacific Northwest National Laboratory (PNNL), which is operated for the U.S. Department of Energy (DOE) by Battelle under Contract DE-AC06-76RL01830. This work was funded by Battelle through the PNNL P2 Pays Program and the DOE Office of Environmental Management, through the Tanks Focus Area Immobilization Program.

Contents

Abstract	iii
Summary	v
Acronyms	vii
Acknowledgments	ix
1.0 Introduction	1.1
2.0 Model For TCLP Normalized B Release	2.1
2.1 Initial Data Evaluation and Screening	2.1
2.2 Composition Conversion	2.4
2.3 Initial Model Development	2.5
2.4 Final Model Development	2.8
2.5 Model Validation	2.12
3.0 Model Applications	3.1
4.0 References	4.1

Figures

Figure 2-1. $\ln(r_i)$ Versus $\ln(r_B)$ for (a) Ba, Cd, Ni, and Zn and (b) Ag, As, Cr, Pb, Se, and Tl in the glasses studied by Kot and Pegg (2001)	2.2
Figure 2-2. $\ln(r_i)$ Versus $\ln(r_B)$ in the Glasses Studied by Vienna et al. (1998)	2.3
Figure 2-3. Calculated Versus Measured $\ln(r_B)$ Values for Glasses Used in the TCLP Model and Excluded from the Model Based on the 14-Component Model in Table 2-3	2.8
Figure 2-4. Scatter Plot Matrix of 231 Glass Compositions (in Mole Fraction) Used in Model Development	2.10
Figure 2-5. Calculated Versus Measured $\ln(r_B)$ Values for Glasses Used in the Final TCLP Model....	2.12

Figure 2-6. Calculated versus Measured $\ln(r_B)$ Values for Glasses Used in the Reduced Data Set Model (Model Glasses) and for Glasses not Used for Model (Validation Glasses)..... 2.14

Figure 3-1. Plots of Calculated vs. Measured TCLP Releases of Eight RCRA Elements (no data exist on Hg) for 231 Glasses Used in The Model Development. (Solid Lines Represent the RCRA Toxicity Limits and Dotted Lines the RCRA UTS Limits.) 3.2

Figure 3-2. Plot of Calculated vs. Measured TCLP Releases of Cd..... 3.4

Tables

Table 2-1. Summary of Data Sets Used in this Study 2.1

Table 2-2. List of Glasses Excluded from TCLP r_B Model Development 2.4

Table 2-3. Model Coefficients, Standard Error, and Model statistics for the TCLP Normalized B Release Models 2.7

Table 2-4. Mole Fraction Range for Components in 231 Glasses Used to Develop the TCLP r_B Model 2.9

Table 2-5. Mass Fraction Range for Components in 231 Glasses Used to Develop the TCLP r_B Model 2.9

Table 2-6. Correlations of 231 Glass Compositions (in Mole Fraction) Used in Model Development... 2.9

Table 2-7. Model Coefficients, Standard Error, and Model Statistics for the Final TCLP r_B Model 2.11

Table 2-8. Model Coefficients, Standard Error, and Model statistics for the Final TCLP r_B Model Used for Model Validation 2.13

Table 3-1. RCRA Toxicity Limits by TCLP and Corresponding Glass Oxide Concentration (see text). 3.1

Table 3-2. RCRA Toxicity Limits by TCLP and Corresponding Glass Oxide Concentration (see text). 3.5

1.0 Introduction

The United States Department of Energy's (DOE's) Hanford Nuclear Reservation is the current home of approximately 53 million gallons of mixed waste stored in 177 waste tanks. The waste material contains *Resource Conservation and Recovery Act of 1976* (RCRA)-regulated hazardous wastes, both listed wastes identified in 40 CFR 261.31 through 40 CFR 261.33, and constituents that are subject to the land disposal restrictions (LDR) contained in 40 CFR 268 and WAC 173-303-140. The RCRA regulated materials also are subject to management under the analogous provisions of the Washington State Dangerous Waste Regulations found in the Washington Administrative Code (WAC), Chapter 173-303. The immobilized high-level waste (IHLW) is intended for disposal at the proposed geologic repository for spent nuclear fuel and high-level radioactive waste. The federal high-level waste repository will not be permitted under RCRA or corresponding State regulations, and will not accept hazardous wastes for disposal. The immobilized low-activity waste (ILAW) is intended for disposal at a land disposal unit, and is subject to compliance with LDR. Current plans include delisting of IHLW, and a LDR treatability variance for both IHLW and ILAW. One of the criteria typically applied to determine whether a material is toxic is to examine the release of certain toxic elements under the conditions of the Environmental Protection Agency (EPA) Toxicity Characteristic Leaching Procedure (TCLP) (e.g., 62 FR 26041). TCLP determines the release of elements extracted from the solid material to a sodium-buffered leachate at a pH of about 5 over a period of 18 hours at room temperature. The strategy for a successful delisting and LDR treatability variance is based in part on the development of TCLP response models as developed from the evaluation of inactive glasses made from simulated Hanford tank waste.

Currently, glass waste is produced in the glass laboratories at the Pacific Northwest National Laboratory (PNNL) and other facilities for the research of nuclear waste vitrification technologies including the glass formulation and various other studies. If no associated TCLP data exist, the glasses produced in these research facilities must be designated based on the components present and are mostly disposed of as hazardous waste. If the glass contains TCLP listed elements below the applicable limits, it is considered non-regulated. For a small quantity of glasses containing toxic metals, it is typically more economical to dispose the glass as hazardous waste because of high cost of TCLP test. We propose that a TCLP release model be applied to designate the glass wastes while accounting for the appropriate uncertainties in model prediction.

A database of glass properties and associated compositions for simulated HLW and low-activity waste (LAW) glasses has been compiled at PNNL for developing property-composition models (Hrma et al. 2001; Vienna et al. 2002). This effort is aimed at improving the understanding of composition effects on glass properties over the broad composition space of expected waste glasses. With this increased understanding, the ability to predict glass volumes, cleanup cost and schedule, and the impacts of changing property constraints and flowsheet options will be possible. Recently, Vienna et al. (2002) report the models applicable to Hanford waste glasses for many properties, such as the product consistency test (PCT) (ASTM 1998) response, viscosity, liquidus temperature, and density (using molar volume). However, they did not report a model for TCLP release, mainly because of limited data on TCLP releases contained in the current database. Additional data on TCLP releases were collected for this study. A model to calculate the effects of composition on normalized release of boron during TCLP was developed, which can be used to estimate the releases of toxic or restricted elements. A wealth of data on the glass responses under PCT condition exists, which also measures the dissolution of glass in aqueous solution. Unfortunately, because of the difference in test conditions, such as temperature,

duration, and sample surface area to leachate volume ratio, the information gained from the study of PCT cannot be directly applied to TCLP responses. However, the general approach applied to modeling the PCT responses may be applicable to modeling TCLP response.

There have been different approaches at modeling the TCLP releases of elements from simulated waste glasses (Vienna et al. 1998, Pickett and Jantzen 2002, Gan and Pegg 2002). Vienna et al. (1998) selected the TCLP normalized boron release as representative or conservative of normalized releases of toxic or restricted elements and used it to model the TCLP releases for these elements. Pickett and Jantzen (2002) also used normalized boron release as a representative of glass dissolution under TCLP conditions and developed the models for normalized releases of Ni and U using THERMO™. Gan and Pegg (2002) divided the normalized TCLP elemental releases into three element groups of approximately the same normalized rate: Group 1: advanced elements (alkalis, alkaline earths, divalent transition metals, B, Ag, U); Group 2: retarded elements (Si, Tl, Se, Sb, and Pb), and Group 3: slow or irregular elements (Al, Fe, Zr, As, and Cr). Cadmium was selected as a representative of Group 1 to compare with other elements in this group and also with those elements in other Groups. It was observed that the Group 2 elements are released at about $\frac{1}{4}$ and Group 3 elements at about $\frac{1}{10}$ that of the Group 1 elements. Then the models were fitted to the selected elements, Cd, Ni, and Tl, which were chosen for illustration because of their representative release behavior and significance in HLW glass delisting. In the present report, the TCLP release data were initially evaluated in terms of the relation between each element release to determine the representative element for modeling, which can be used to predict the releases of other elements. Initial models were fit to experimental data and validated, prior to development of the final model as discussed in the remainder of this report.

2.0 Model For TCLP Normalized B Release

2.1 Initial Data Evaluation and Screening

Table 2-1 summarizes the data sets used in this study. The current PNNL database on glass composition and properties (Vienna et al. 2002) contains 165 glasses with TCLP release data from six different studies with the majority of the glasses from one study that had 140 glasses. In addition, 86 more glasses with TCLP data were collected for this modeling effort. The 86 additional glasses are from three studies that were not included in the database (last three studies in Table 2-1), giving a total of 251 glasses for evaluation. Appendix A contains the glass compositions in mass fraction and TCLP release data for all 251 glasses. It should be noted that, when the property data are collected from different studies, there exist subtle differences in the test and analytical procedures between different studies, which sometimes make it less ideal for developing property models.

Table 2-1. Summary of Data Sets Used in this Study

Study	Reference	# of glasses
TWRS LAW Formulation 2	Ferrara et al. 1998	3
SRS M-Area Mixed Waste	Fu et al. 1997	6
TWRS LAW Formulation	Muller and Pegg 1998	4
TWRS HLW Glass Formulation	Fu and Pegg 1998	8
RPP-WTP LAW Formulation	Muller et al. 2001	4
RPP-WTP HLW Formulation	Kot and Pegg 2001	140
LANL Glasses	Vienna et al. 1998	37
Plutonium Residue Glasses	Bulkley and Vienna 1997	28
SRS LLMW Glasses	Cicero-Herman 2002, Not published ^(a)	21
	Total	251

(a) The data were delivered to PNNL in an electronic form from Connie Cicero-Herman, SRTC.

As discussed below in this Section, evaluating the above data to determine the representative element for TCLP releases suggested that the normalized boron release is most suitable for representing the dissolution of glass and thus for modeling to predict the releases of other elements. The normalized elemental releases, r_i (in mg/L), is defined as below:

$$r_i = \frac{c_i}{f_i} \quad (2.1)$$

where c_i (mg/L) is the TCLP release of i -th element and f_i is the mass fraction of i -th element in glass.

Figure 2-1 is the plot $\ln(r_i)$ versus $\ln(r_B)$ for eight RCRA elements of interest (Ag, As, Ba, Cd, Cr, Ni, Pb, and Se) plus Tl and Zn for the glasses collected from Kot and Pegg (2001). One of the RCRA elements, mercury, is not included because there are no data on the glasses containing HgO as a glass

component. Further, of a total of 2001 glasses contained in the current PNNL database, only one glass had a target concentration of 0.01 wt% HgO (Vienna et al. 2002).

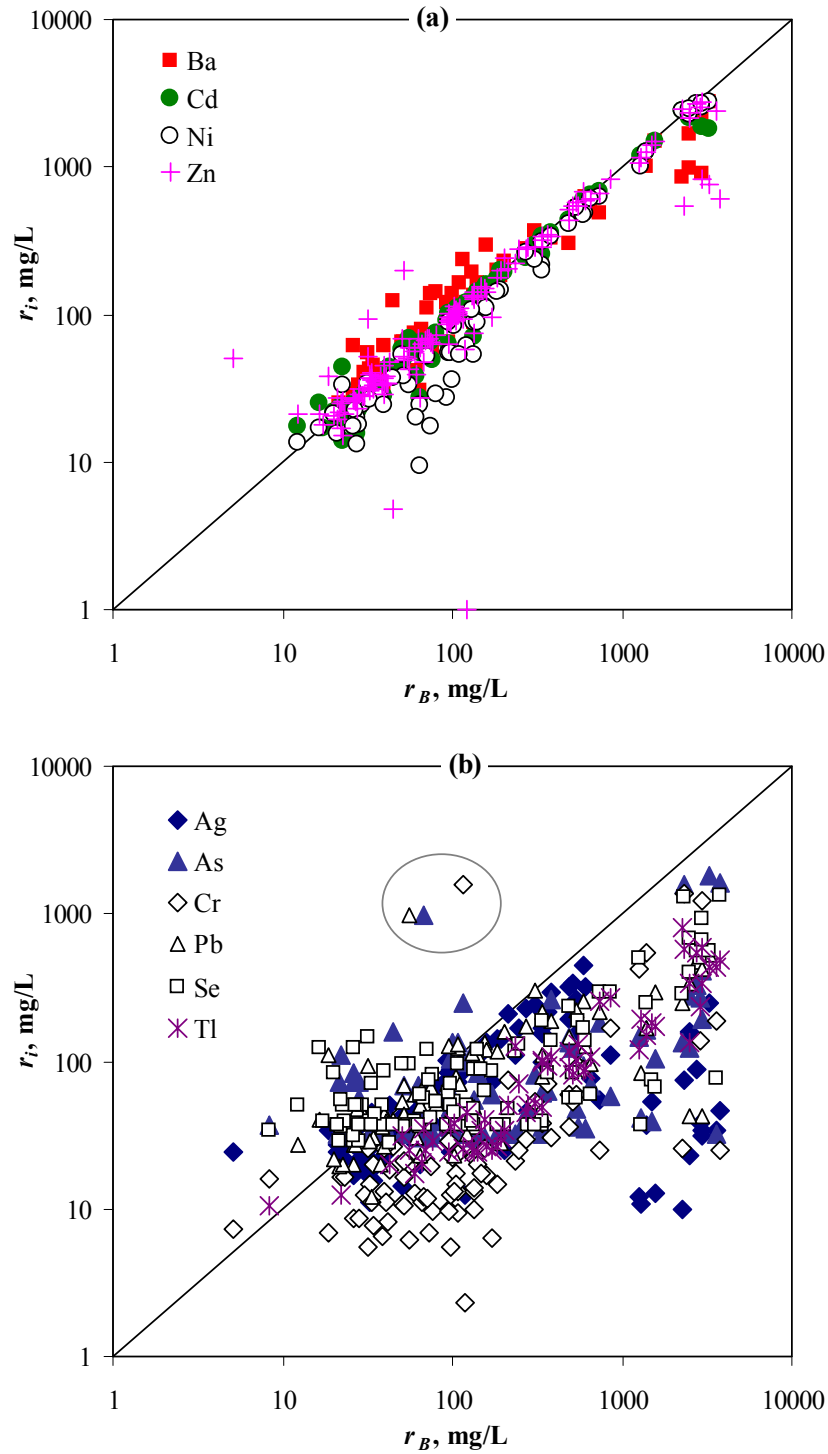


Figure 2-1. $\ln(r_i)$ Versus $\ln(r_B)$ for (a) Ba, Cd, Ni, and Zn and (b) Ag, As, Cr, Pb, Se, and Tl in the glasses studied by Kot and Pegg (2001)

Figure 2-1 shows that the normalized releases of all 10 elements are similar to or lower than that of boron except for three glasses that are obvious outliers. The glasses with lower TCLP releases show larger scatter of data, which is presumably caused by the larger uncertainty (sample collection, handling, and analytical error) involved in the leachate analysis and glass preparation when the elements are present in low concentration and glass dissolution is slow.

The elements in Figure 2-1 were divided into two groups based on their normalized releases compared to normalized boron release: (1) congruent (Ba, Cd, Ni, and Zn) and (2) incongruent (Ag, As, Cr, Pb, Se, and Tl). A similar groupings can also be made to all other elements reported in the study by Kot and Pegg (2001), i.e., some are released at the similar rate as boron and some at a lower rate than boron. The exception was alkali elements—the most mobile elements, K and Li (excluding Na because it is used in TCLP leachate)—that show sometimes higher normalized releases than boron, which indicates that alkali elements can leach out selectively by ion exchange. The evaluation based on Figure 2-1 indicates that normalized boron release can be used to estimate the extent of glass dissolution under TCLP conditions in a similar way as used in the PCT. The lower normalized releases of some elements are due to low solubility of these elements or precipitation in solid forms.

The similar plot for Los Alamos National Laboratory (LANL) glasses (Vienna et al. 1998) is in Figure 2-2. Figure 2-2 shows the releases of two alkali elements to illustrate the point discussed here. This agrees well with the tendency observed in Figure 2-1 in that Ni is congruent and Cr is incongruent (no comparison is possible for Pb because it has only one data point). Other studies in Table 2-1 did not have both B release and RCRA element releases together for such an analysis (some studies had B release only and some had RCRA element releases without B release).

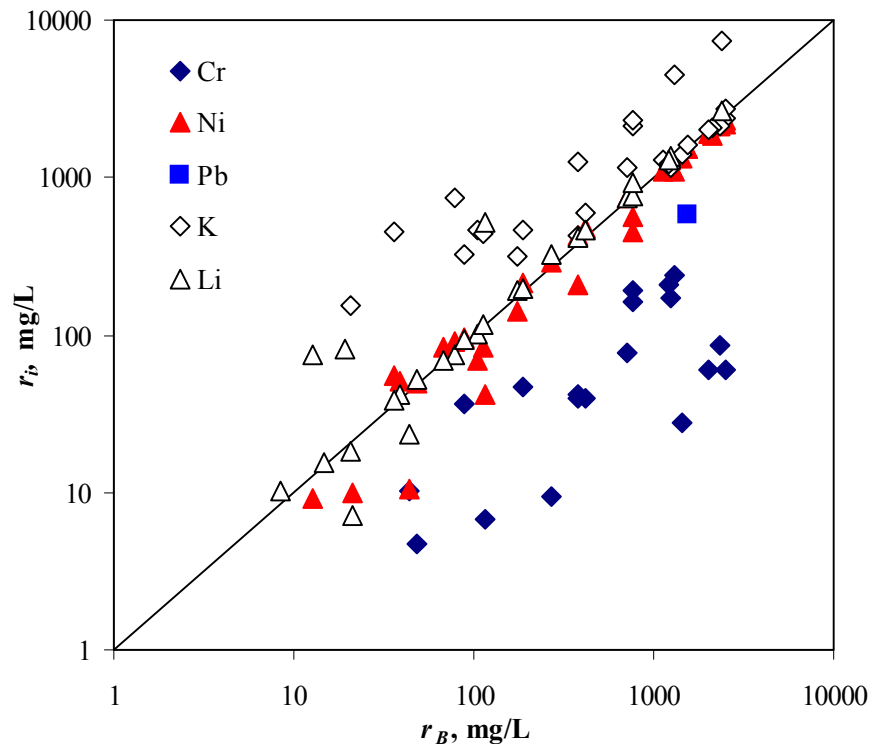


Figure 2-2. $\ln(r_i)$ Versus $\ln(r_B)$ in the Glasses Studied by Vienna et al. (1998)

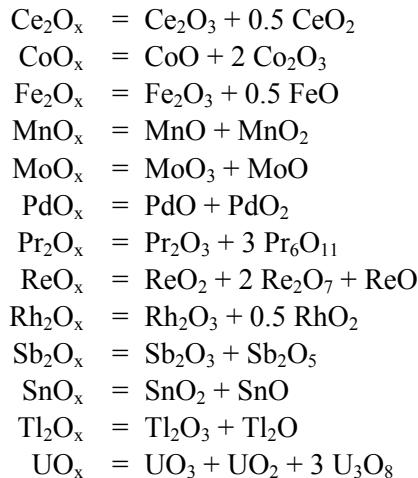
Of the 251 glasses in Table 2-1, 221 glasses had boron-release data. These 221 glasses were evaluated for concentration distribution, which identified six glasses that had an extreme concentration of SiO₂, B₂O₃, or CaO, which were removed from the data set. During the model fitting, four glasses that constantly had large residuals in ln(*r_B*) regardless of model components chosen were removed as outliers.^(a) Table 2-2 summarizes the glasses removed from the data set. The remaining 211 glasses were used to develop the model.

Table 2-2. List of Glasses Excluded from TCLP rB Model Development

Glass	Study	Reason
RFP-4	SRS LLMW Glasses	Extreme SiO ₂ concentration
LANL-1	SRS LLMW Glasses	Extreme SiO ₂ concentration
LANL-13	SRS LLMW Glasses	Extreme SiO ₂ concentration
WETF-7	SRS LLMW Glasses	Extreme B ₂ O ₃ concentration
LANL-8	SRS LLMW Glasses	Extreme B ₂ O ₃ concentration
LANL-3	SRS LLMW Glasses	Extreme CaO concentration
HLW99-04	RPP-WTP HLW Formulation	Model outlier
RFP-8	SRS LLMW Glasses	Model outlier
RFP-9	SRS LLMW Glasses	Model outlier
HLW99-34	RPP-WTP HLW Formulation	Model outlier

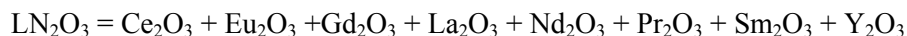
2.2 Composition Conversion

For model calculation, the glass compositions were first converted into mole fractions of oxides (and halogens) by standard methods. Several components were listed in the database with multiple oxidation states. These components were combined into groups of like metal oxides according to:



(a) Although it is preferable to determine whether glasses are “well-predicted” by a more rigorous model using standardized residuals (residual/standard deviation), it is easier to use residuals, and for the purposes of this modeling effort, it was deemed the appropriate level of effort. For detailed discussion of the rigorous methods used to reduce terms in a statistical model see Piepel and Redgate (1997).

When only one oxide form had at least one glass with non-zero concentration, this oxide form was used instead of the combined form, e.g., MnO was used instead of MnO_x if no glass had MnO₂. The resultant compositions were then normalized to 1. In addition, the lanthanide oxides and Y₂O₃ were combined to form a single component – LN₂O₃:



because these components were in insufficient concentrations in most glasses and did not, by themselves, have sufficient variation to justify fitting separate coefficients for them. However, combined they were in sufficient concentration and showed sufficient variation for a combined coefficient. Generally, their effects on glass properties are similar and vary only with ionic radius; however, this variation with radius was not accounted for in this study.

After forming the combined components, the 251 glass compositions were expressed as normalized mole fractions of 44 components. Those components with concentrations greater than 1.5 mole% in at least one glass and with a reasonable distribution were considered as possible model components—leaving 19 components. Only a limited number of components can be included in modeling. In treating the components that are not included in the model components, two different approaches can be applied: (1) to use the Others component as a sum of all the components not included in the model or (2) to use compositions normalized to sum to one after deleting the components not included in the model. The approach (a) using Others component was adopted for this study as was used for models in the recent interim model report for Hanford waste glasses (Vienna et al. 2002).

2.3 Initial Model Development

The natural logarithm of normalized boron release (r_B) was modeled as a linear function of glass composition:

$$\ln[r_B] = \sum_{i=1}^N r_{B,i} x_i \quad (2.2)$$

where $r_{B,i}$ is the model coefficients for i -th glass component, x_i is the mole fraction of i -th component in glass, and N is the number of components. Then, the TCLP release of each RCRA element is calculated by the relation:

$$c_i = r_B f_i \quad (2.3)$$

The calculated c_i is based on the observation that $r_i \leq r_B$ for all RCRA elements as discussed in Section 2.1.

The model coefficients from 211 glasses were initially calculated using 20 components (19 components selected in Section 2.2 plus Others), which were identified as the maximum number of components that have reasonable ranges of mole fractions and distributions of mole-fraction values within

the range to consider including them in the model. Then the next models were calculated based on the reduced number of components removing the component(s) of higher uncertainty or of less importance. Table 2-3 shows which components were included in the 20-, 18-, 17-, 16-, 15-, and 14-component models by providing model coefficient and standard-error values. Summary statistics from the regression analysis for each of these models are also included in Table 2-3.

The R^2 and root mean square error (RMSE) values do not change significantly with a reduced number of model components until the 14-component model, indicating that those six components deleted may not contribute to improve the model. However, deleting LN_2O_3 from the 14-component model to the 13-component model decreases the R^2 and increases the RMSE significantly. Therefore, the 14-component model (13 components plus Others) was selected for further evaluation. Further reduction would delete or combine SrO and MnO_x because their high standard error and concentration correlation. However, these two components were deliberately included because these are major components for Hanford HLW glasses, which were not tested extensively because these components became important recently due to the change of the waste-pretreatment process. The plot of calculated $\ln(r_B)$ versus measured $\ln(r_B)$ is in Figure 2-3, which also shows the glasses excluded from the model data as listed in Table 2-2.

The 14-component model was preliminarily applied to calculate the TCLP release of eight RCRA components for the glasses that have resulted from various studies and have been archived for future use whenever necessary. The estimated TCLP releases of toxic component from glasses found in PNNL archives (and in the PNNL database) were compared with the RCRA Toxicity Limits, which will be discussed in Section 3. Of 344 glass compositions calculated, only 3 glasses were predicted to fail TCLP requirements (applying the 95% confidence band using t-distribution). However, 56 glasses could not be accurately predicted by the TCLP model because their compositions were outside of model validity range. It is believed that most of these glasses would pass the requirements if the model validity range were expanded, considering that their calculated (extrapolated) TCLP releases are far below the toxicity limits. Therefore, it was decided to expand the database by including TCLP data for more glasses. Twenty glasses with a higher concentration of Al_2O_3 and ZrO_2 were collected from three studies (Crum et al. 1997; Li et al. 1997; Vienna et al. 2001) and were tested for TCLP releases.^(a) Al_2O_3 and ZrO_2 were selected because these components had caused the largest number of glasses to be outside of model validity range. These new data were included in the final model development. Appendix A includes the composition and TCLP data for these 20 glasses along with other data used in TCLP model development.

(a) Tests were conducted by Severn Trent laboratories, Inc., 13715 Rider Trail North, Earth City, MO 63045, following the EPA's SW-846 Method 1311.

Table 2-3. Model Coefficients, Standard Error, and Model statistics for the TCLP Normalized B Release Models

Component	20-Comp.		18-Comp.		16-Comp.		15-Comp.		14-Comp.		13-Comp.	
	Coeff.	Std Error	Coeff.	Std Error	Coeff.	Std Error	Coeff.	Std Error	Coeff.	Std Error	Coeff.	Std Error
Al ₂ O ₃	-13.748	1.989	-12.897	1.980	-12.239	1.882	-12.613	1.815	-12.220	1.784	-15.626	2.457
B ₂ O ₃	14.668	0.805	14.599	0.815	14.551	0.815	14.423	0.797	14.327	0.793	17.105	1.066
CaO	14.541	1.068	14.146	1.061	14.009	1.037	14.165	1.015	14.121	1.015	13.289	1.410
Fe ₂ O ₃	-11.655	2.289	-10.152	2.239	-9.484	2.210	-10.041	2.082	-10.007	2.084	-1.491	2.766
K ₂ O	29.189	2.659	28.766	2.568	28.601	2.567	28.939	2.525	28.861	2.526	22.600	3.456
Li ₂ O	10.157	1.089	10.576	1.081	10.618	1.030	10.576	1.027	10.391	1.015	11.305	1.410
MgO	12.971	1.209	12.326	1.198	12.392	1.198	12.807	1.065	12.949	1.058	14.183	1.467
Na ₂ O	18.743	1.021	18.930	1.030	18.791	1.016	18.659	1.000	18.431	0.981	19.974	1.356
NiO	34.257	29.838	31.691	13.220								
P ₂ O ₅	37.043	33.788	39.090	33.976								
SiO ₂	-1.376	0.394	-1.275	0.396	-1.214	0.395	-1.268	0.388	-1.213	0.386	-2.680	0.516
ZrO ₂	-7.821	3.695	-6.520	3.701	-7.269	3.685	-8.210	3.466	-7.903	3.459	-16.470	4.732
BaO	-116.404	49.319										
CdO	117.390	53.241										
LN ₂ O ₃	-95.087	15.984	-94.319	13.814	-106.239	10.462	-101.081	7.945	-99.609	7.848		
MnO _x	15.481	8.564	22.256	8.159	19.362	7.633	19.747	7.608	19.256	7.602	30.972	10.509
SrO	9.807	6.550	5.009	6.338	5.835	6.033	4.941	5.910	5.774	5.871	2.433	8.161
UO _x	-14.011	23.473	-11.830	23.366	1.654	7.503	0.810	7.412				
ZnO	10.505	13.473	7.103	13.573	0.382	12.668						
Others	7.934	7.427	1.444	6.255	10.983	1.925	9.940	1.346	9.240	1.202	6.274	1.645
Model statistics												
Number of Glasses	211		211		211		211		211		211	
R ²	0.878		0.874		0.872		0.871		0.870		0.748	
R ² (Adjusted)	0.866		0.863		0.862		0.862		0.862		0.733	
s (RMSE)	0.5871		0.5945		0.5960		0.5954		0.5959		0.8291	

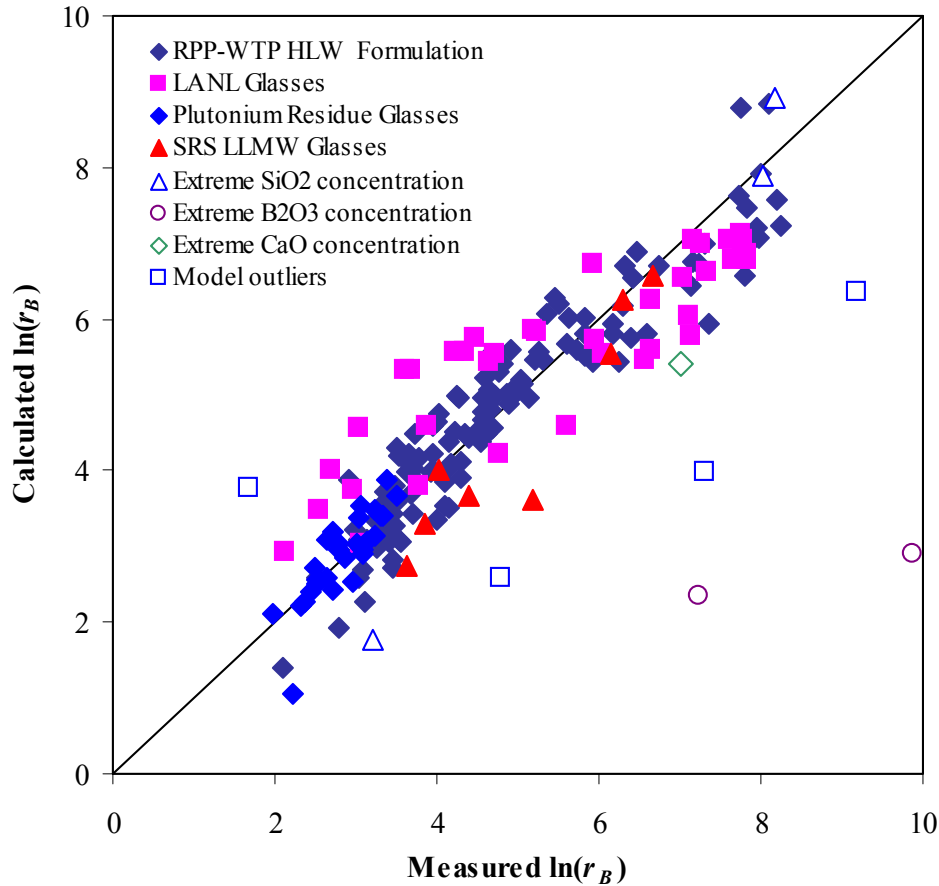


Figure 2-3. Calculated Versus Measured $\ln(r_B)$ Values for Glasses Used in the TCLP Model and Excluded from the Model Based on the 14-Component Model in Table 2-3

2.4 Final Model Development

The 231 glasses discussed in Section 2.3 were used to develop the final model. The composition ranges of these 231 glasses expressed in mole fraction and mass fraction are summarized in Table 2-4 and Table 2-5. The primary determination on whether the glass is within the model validity range is performed based on the mole fraction of 14 model components, including the Others component used in the final model.

The component correlations and scatter matrix plot of 231 glass compositions used to develop the final model are in Table 2-6 and Figure 2-4. As seen in Table 2-6 there is a strong correlation between MnO_x and SrO , but it was decided to include these two components in the model considering the importance of these components for glass development for recent estimated Hanford HLW. These two components should be the focus in the future when more glasses are tested to improve the model.

Summary statistics from the regression analysis for the final 14-component model is included in Table 2-7. The plot of calculated $\ln(r_B)$ versus measured $\ln(r_B)$ is in Figure 2-5.

Table 2-4. Mole Fraction Range for Components in 231 Glasses Used to Develop the TCLP r_B Model

Component	Min	Max	Component	Min	Max	Component	Min	Max
Al ₂ O ₃	0.0000	0.1296	NiO	0.0000	0.0304	PdO	0.0000	0.0003
B ₂ O ₃	0.0165	0.2217	P ₂ O ₅	0.0000	0.0169	Rh ₂ O ₃	0.0000	0.0003
CaO	0.0000	0.2269	Ag ₂ O	0.0000	0.0009	RuO ₂	0.0000	0.0008
Fe ₂ O ₃	0.0000	0.0845	As ₂ O _x	0.0000	0.0008	Sb ₂ O _x	0.0000	0.0010
K ₂ O	0.0000	0.1097	BaO	0.0000	0.0197	SeO ₂	0.0000	0.0017
Li ₂ O	0.0000	0.2051	Bi ₂ O ₃	0.0000	0.0096	SnO _x	0.0000	0.0206
MgO	0.0000	0.1960	CdO	0.0000	0.0177	SO ₃	0.0000	0.0050
Na ₂ O	0.0000	0.2581	Cl	0.0000	0.0108	TeO ₂	0.0000	0.0010
SiO ₂	0.3331	0.6458	CoO	0.0000	0.0064	ThO ₂	0.0000	0.0164
ZrO ₂	0.0000	0.0908	Cr ₂ O ₃	0.0000	0.0086	TiO ₂	0.0000	0.0429
LN ₂ O ₃	0.0000	0.0231	Cs ₂ O	0.0000	0.0027	Tl ₂ O _x	0.0000	0.0009
MnO _x	0.0000	0.0795	CuO	0.0000	0.0020	UO _x	0.0000	0.0237
SrO	0.0000	0.1023	F	0.0000	0.0183	V ₂ O ₅	0.0000	0.0004
Others	0.0004	0.1685	MoO _x	0.0000	0.0034	WO ₃	0.0000	0.0007
			PbO	0.0000	0.0157	ZnO	0.0000	0.0197

Table 2-5. Mass Fraction Range for Components in 231 Glasses Used to Develop the TCLP r_B Model

Component	Min	Max	Component	Min	Max	Component	Min	Max
Al ₂ O ₃	0.0000	0.1929	CeO ₂	0.0000	0.0650	Sb ₂ O ₃	0.0015	0.0023
B ₂ O ₃	0.0200	0.2000	Cl	0.0000	0.0056	Sb ₂ O ₅	0.0000	0.0044
CaO	0.0000	0.2022	CoO	0.0000	0.0063	SeO ₂	0.0000	0.0026
Fe ₂ O ₃	0.0000	0.2030	Cr ₂ O ₃	0.0000	0.0189	SnO	0.0000	0.0400
K ₂ O	0.0000	0.1500	Cs ₂ O	0.0000	0.0111	SnO ₂	0.0000	0.0016
Li ₂ O	0.0000	0.1000	CuO	0.0000	0.0021	SO ₃	0.0000	0.0050
MgO	0.0000	0.1200	F	0.0000	0.0050	SrO	0.0001	0.1399
Na ₂ O	0.0000	0.2123	Gd ₂ O ₃	0.0368	0.0500	TeO ₂	0.0000	0.0021
NiO	0.0000	0.0300	La ₂ O ₃	0.0000	0.0128	ThO ₂	0.0000	0.0591
P ₂ O ₅	0.0000	0.0300	MnO ₂	0.0000	0.0912	TiO ₂	0.0000	0.0500
SiO ₂	0.3000	0.6600	MnO	0.0000	0.0664	Tl ₂ O ₃	0.0000	0.0062
ZrO ₂	0.0000	0.1600	MoO ₃	0.0000	0.0071	UO ₂	0.0000	0.0800
Ag ₂ O	0.0000	0.0026	Nd ₂ O ₃	0.0000	0.0091	UO ₃	0.0044	0.0050
As ₂ O ₃	0.0000	0.0021	PbO	0.0000	0.0500	V ₂ O ₅	0.0000	0.0009
BaO	0.0000	0.0400	PdO	0.0000	0.0004	WO ₃	0.0000	0.0021
Bi ₂ O ₃	0.0000	0.0641	Rh ₂ O ₃	0.0000	0.0008	Y ₂ O ₃	0.0000	0.0001
CdO	0.0000	0.0300	RuO ₂	0.0000	0.0014	ZnO	0.0001	0.0210

Table 2-6. Correlations of 231 Glass Compositions (in Mole Fraction) Used in Model Development

	Al ₂ O ₃	B ₂ O ₃	CaO	Fe ₂ O ₃	K ₂ O	Li ₂ O	MgO	Na ₂ O	SiO ₂	ZrO ₂	LN ₂ O ₃	MnO _x	SrO	Others
Al ₂ O ₃	1	0.013	-0.128	0.200	-0.121	0.019	-0.224	0.079	-0.259	-0.252	-0.085	0.182	0.214	-0.163
B ₂ O ₃		1	0.017	0.042	-0.090	-0.303	-0.089	0.049	-0.419	-0.123	-0.250	-0.142	-0.092	0.102
CaO			1	-0.283	0.222	-0.191	0.282	-0.153	-0.131	-0.249	0.134	-0.265	-0.229	-0.194
Fe ₂ O ₃				1	-0.202	0.030	-0.217	-0.012	-0.116	-0.060	-0.345	0.124	0.167	-0.008
K ₂ O					1	0.000	0.247	-0.255	0.042	-0.163	0.253	-0.160	-0.137	-0.147
Li ₂ O						1	-0.098	-0.559	0.097	0.046	0.054	0.043	-0.008	-0.054

MgO							1	-0.252	0.060	-0.331	0.028	-0.291	-0.255	-0.298
Na ₂ O								1	-0.214	0.210	-0.065	-0.101	-0.132	0.175
SiO ₂									1	-0.016	0.229	-0.309	-0.326	-0.429
ZrO ₂										1	0.073	0.199	0.044	0.130
LN ₂ O ₃											1	-0.206	-0.199	-0.055
MnO _x												1	0.943	0.129
SrO													1	0.136
Others														1

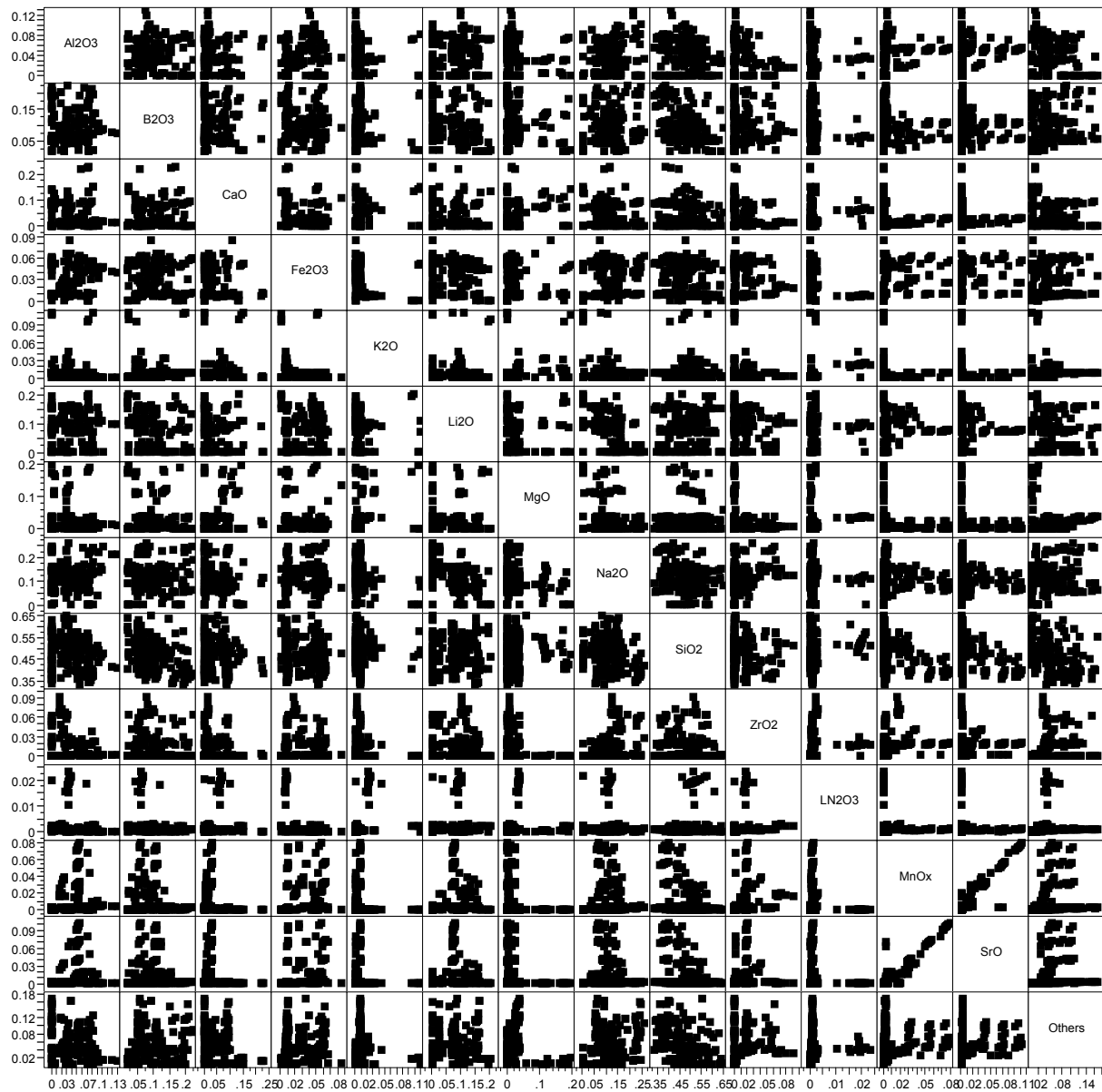


Figure 2-4. Scatter Plot Matrix of 231 Glass Compositions (in Mole Fraction) Used in Model Development

Table 2-7. Model Coefficients, Standard Error, and Model Statistics for the Final TCLP r_B Model

Component	Final 14-Comp. Model	
	Coeff.	Std Error
Al ₂ O ₃	-11.830	1.637
B ₂ O ₃	14.155	0.767
CaO	14.266	0.982
Fe ₂ O ₃	-9.869	2.027
K ₂ O	29.025	2.465
Li ₂ O	10.456	0.937
MgO	12.980	1.032
Na ₂ O	18.440	0.874
SiO ₂	-1.270	0.358
ZrO ₂	-10.114	2.685
LN ₂ O ₃	-98.649	7.577
MnO _x	15.308	6.942
SrO	8.975	5.238
Others	9.696	1.116
Model Statistics		
Number of Glasses	231	
R ²	0.870	
R ² (Adjusted)	0.862	
s (RMSE)	0.5825	

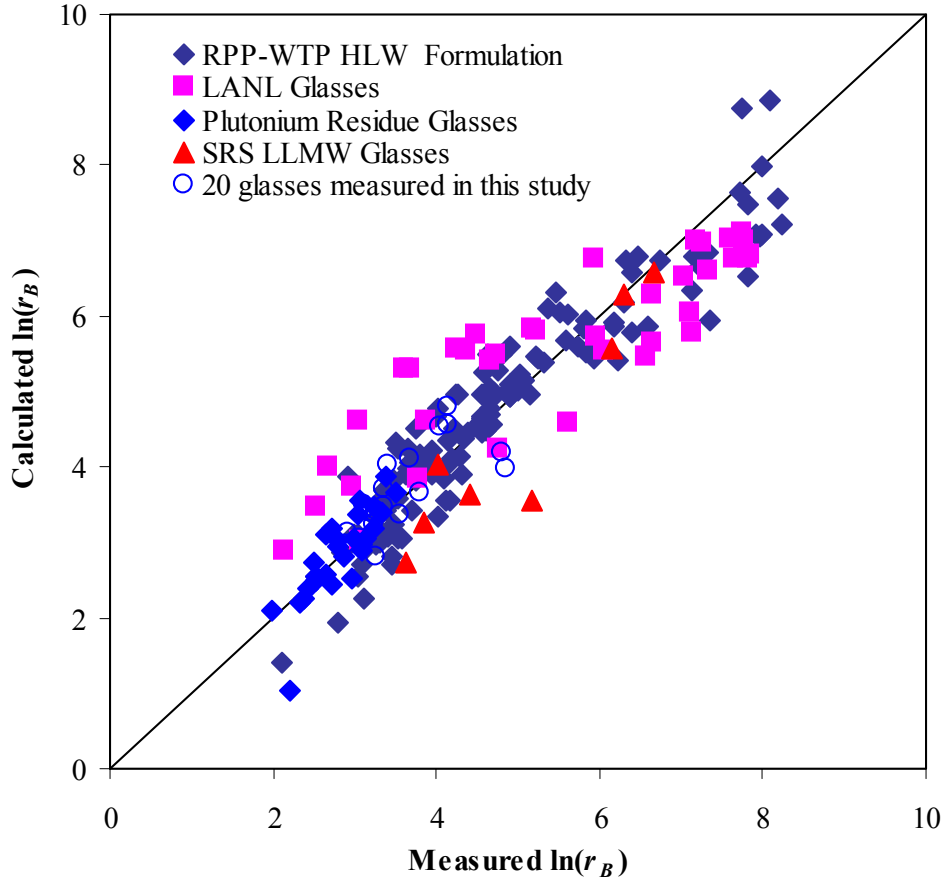


Figure 2-5. Calculated Versus Measured $\ln(r_B)$ Values for Glasses Used in the Final TCLP Model

2.5 Model Validation

To determine how well the model performs for the glasses not used to develop the model, the 231 glasses with r_B data were sorted in the order of r_B and were divided into two subsets by reserving the fifth glass in every five glasses for use to validate the model. This resulted in 46 validation glasses. The other 185 glasses were used for model development (model glasses). The same 14 components used in the final model were used.

Table 2-8 summarizes the model statistics of the reduced-data-set model and the statistics for model validation. The R^2 value in the reduced-data-set model was slightly higher than the full-data-set model. The R^2 (validation) is reasonably good, which was also to be expected, considering that the model coefficients from both models were not much different. Figure 2-6 shows that the model predicts very well the glasses that were not used to develop the model.

Table 2-8. Model Coefficients, Standard Error, and Model statistics for the Final TCLP r_B Model Used for Model Validation

Component	Reduced Data Model	
	Coeff.	Std Error
Al ₂ O ₃	-10.658	1.810
B ₂ O ₃	14.445	0.867
CaO	14.460	1.066
Fe ₂ O ₃	-9.844	2.276
K ₂ O	26.307	3.602
Li ₂ O	10.155	1.038
MgO	14.086	1.314
Na ₂ O	17.244	0.956
SiO ₂	-1.070	0.377
ZrO ₂	-7.330	3.081
LN ₂ O ₃	-100.686	8.758
MnO _x	14.683	7.121
SrO	8.540	5.382
Others	8.953	1.201
Model statistics		
Number of Glasses	185	
R ²	0.878	
R ² (Adjusted)	0.869	
s (RMSE)	0.5664	
Validation Statistics		
Number of Glasses	46	
R ² (Validation)	0.817	

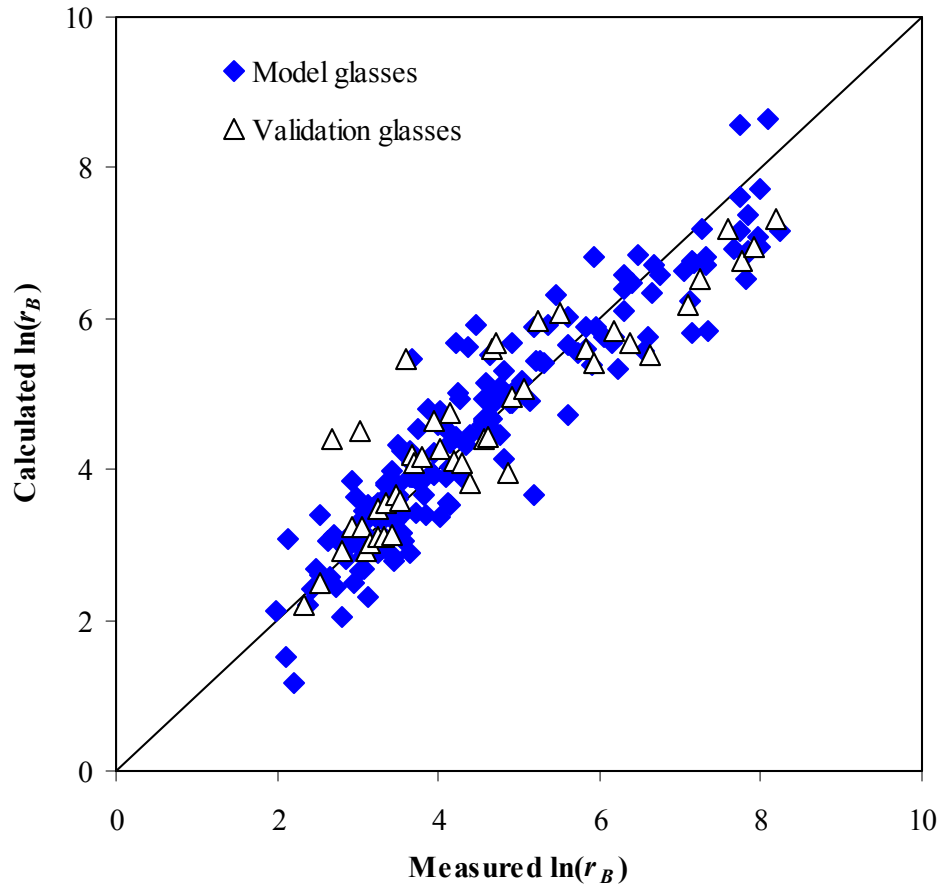


Figure 2-6. Calculated versus Measured $\ln(r_B)$ Values for Glasses Used in the Reduced Data Set Model (Model Glasses) and for Glasses not Used for Model (Validation Glasses)

3.0 Model Applications

The calculated c_i using Equation 2.3 is based on the observation that generally $r_i \leq r_B$ for all RCRA elements, which provides a reasonable estimation for congruent elements (Ba, Cd, Ni, and Zn) and a conservative estimation for those “incongruent” elements (Ag, As, Cr, Pb, and Se). It will be necessary to develop the separate models for these incongruent elements if they become a limiting factor that causes the glasses to fail the TCLP requirements, since the currently model predicts higher releases the measured in most cases. The development of separate models would require larger number of data than currently available. As a first step, it was attempted to develop the model for TCLP Cd release (third in number of data after B and Ba, but Ba is less important because its regulatory limit is high), but this effort was not successful, primarily because of limited data on Cd release and possibly because of the dominant effect of CdO concentration in glass. The component coefficients changed erratically with the change of model components, even though the model had higher R^2 values than the r_B model.

Table 3-1 summarizes the regulatory limits used by EPA for designation of regulatory wastes (55 FR 22520) and the land-disposal restrictions (LDR) universal treatment standard (UTS) (61 FR 2338; 62 FR 26041). UTS limits are lower than the toxicity limits for all elements except for As and Se.

Table 3-1. RCRA Toxicity Limits by TCLP and Corresponding Glass Oxide Concentration (see text)

Element	Ag	As	Ba	Cd	Cr	Hg	Ni	Pb	Se
RCRA Toxicity Limit (mg/L)	5	5	100	1	5	0.2	--	5	1
RCRA UTS Limit (mg/L)	0.14	5	21	0.11	0.6	0.025	11	0.75	5.7

Figure 3-1 shows the plots of calculated versus measured releases of eight RCRA elements for 231 glasses used in the model development. Also included in Figure 3-1 are the lines representing the values of RCRA toxicity and UTS limits. In terms of pass/fail classification, the data points in the top-left rectangle separated by each line of regulatory limit represent the false classification of non-hazardous glasses as hazardous (“false positive”), and the bottom right represents the false classification of hazardous glasses as non-hazardous (“false negative”). Figure 3-1 shows that there are two glasses in the bottom-right rectangle of “false negative” classification based on RCRA toxicity limits (blue solid line, one each for c_{Cd} and c_{Cr}), which are predicted to be non-hazardous but are hazardous based on TCLP measurements.

Figure 3-2 illustrates the classification errors using c_{Cd} and its RCRA toxicity limit as an example. In order to decrease the probability of “false negative” classification, it is necessary to apply the prediction uncertainty, u .^(a) The method for uncertainty calculation will be dependent on the nature of application and governing regulations. Figure 3-2 shows that there are one glass in the “false negative” region and

(a) Typically, u is calculated using either the t-statistic according to $u = \sqrt{s^2 T \mathbf{x}' (\mathbf{X}' \mathbf{X})^{-1} \mathbf{x}}$ or the f-statistic according to $u = \sqrt{p s^2 F \mathbf{x}' (\mathbf{X}' \mathbf{X})^{-1} \mathbf{x}}$, where s is the root mean square error, T is the t-statistic at the appropriate confidence (e.g., 95% one sided) and degrees of freedom, \mathbf{x} is the composition vector, \mathbf{X} is the matrix of compositions used in model fitting, p is the number of model coefficients, and F is the f-statistic at the appropriate confidence and degrees of freedom. The appropriate method depends upon the application.

four glasses in the “false positive” if the classification is based on as-predicted values. However, by applying the upper bound ($\ln(c_{Cd})+u$) of the confidence band ($\ln(c_{Cd})\pm u$) as a limit (here, u was assumed as a constant value arbitrary chosen for the purpose of this illustration), the one glass in the “false negative” region is eliminated but the four glasses in false positive” region increases to 12.

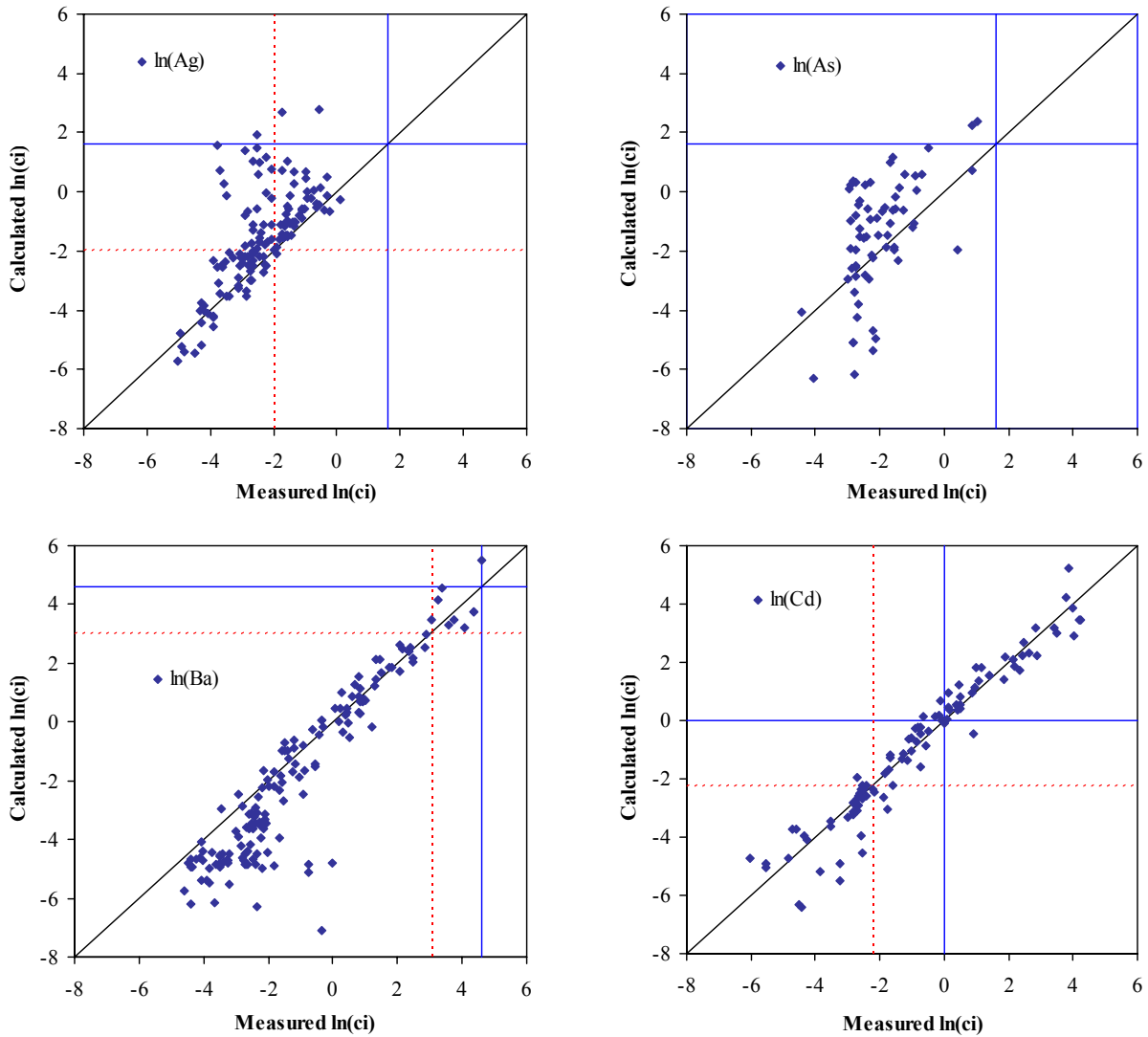


Figure 3-1. Plots of Calculated vs. Measured TCLP Releases of Eight RCRA Elements (no data exist on Hg) for 231 Glasses Used in The Model Development. (Solid Lines Represent the RCRA Toxicity Limits and Dotted Lines the RCRA UTS Limits.)

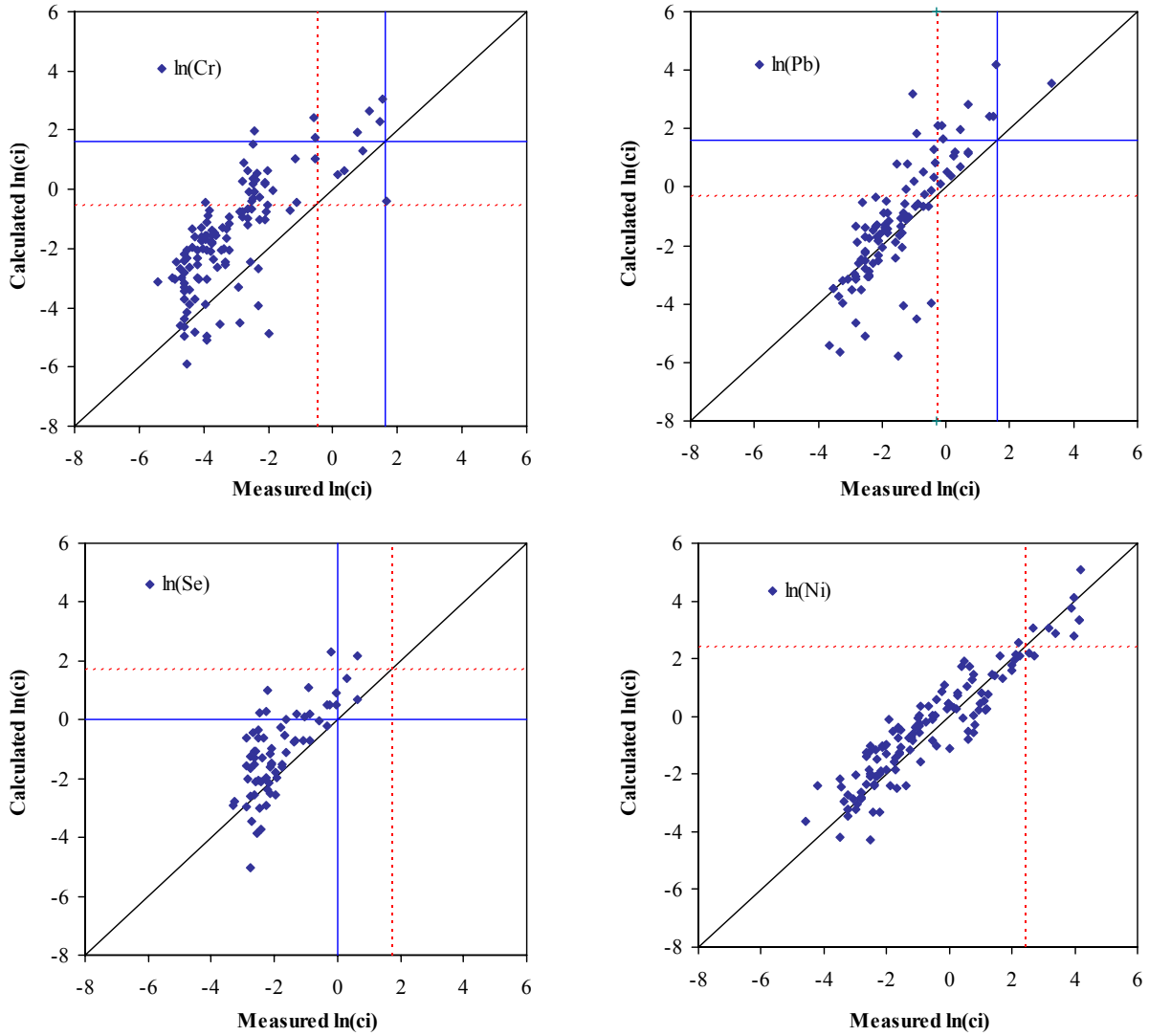


Figure 3-1. Plots of Calculated vs. Measured TCLP Releases of Eight RCRA Elements (no data exist on Hg) for 231 Glasses Used in The Model Development. (Solid Lines Represent the RCRA Toxicity Limits and Dotted Lines the RCRA UTS Limits.) Continued.

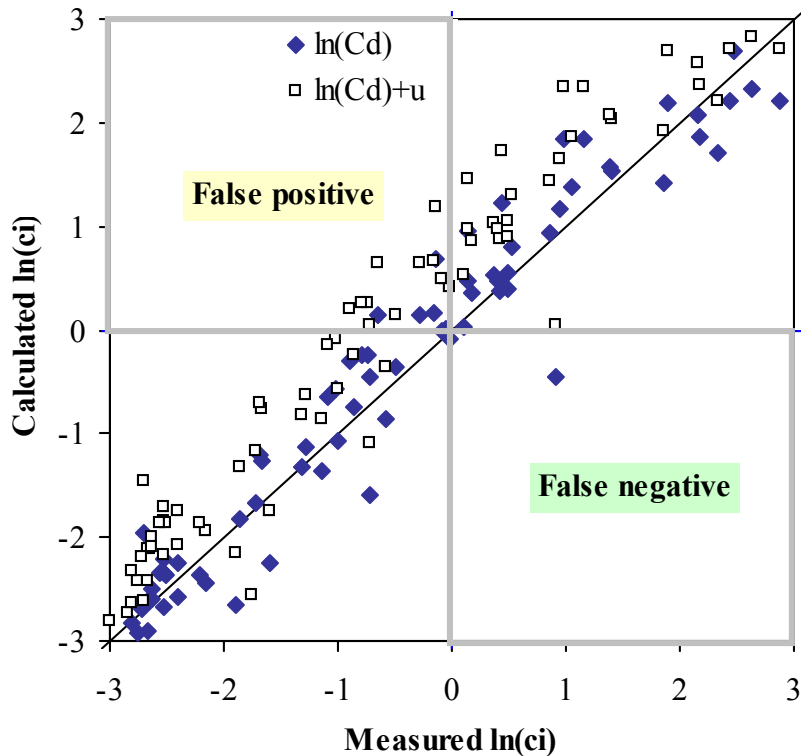


Figure 3-2. Plot of Calculated vs. Measured TCLP Releases of Cd.

The normalized release, r_i , represents the amount of glass dissolved in the TCLP condition if it is assumed that the glass dissolves congruently, i.e., all the elements in glass release at the same rate. If the glass sample were entirely dissolved in TCLP and the dissolution were congruent, then $r_i = 50,000$ for all elements. Similar to PCT, boron is believed to be the most appropriate element to represent the glass network dissolution—neither participation in precipitation of mineral phases nor preferential release of elements like alkalis by ion exchange (see Hrma et al. 1994 for example).

Of 241 glasses with boron-release data (initial 221 plus the additional 20 glasses), the r_B was below 3800 mg/L for all glasses but one (RFP-8), which is an obvious outlier.^(a) The maximum release of 3800 mg/L corresponds to the glass dissolution of 7.6% under TCLP conditions. Assuming conservatively that 10% is the maximum glass dissolution for typical waste glasses, we can calculate the corresponding release of these elements based on glass composition if congruent dissolution is assumed. Table 3-2 shows the concentration of oxides in glass that correspond to the TCLP limits of each element when it is assumed that the glass dissolves congruently at the maximum rate of 10% for typical glasses. This information can be used as a good preliminary screening of glasses that will pass the TCLP requirements based only on the oxide concentration of RCRA elements without having to apply the TCLP model. For example, if the oxide concentrations of all RCRA elements are lower than the values in Table 3-2 for each requirement (toxicity and UTS), the glass will pass that TCLP requirement. However, if a glass has a

(a) This glass had 9694 mg/L. Reviewing the composition of this glass compared with other glasses did not suggest any reason that this particular glass should dissolve more than twice the maximum dissolution in the other 240 glasses. This composition needs to be tested again to confirm this assumption.

concentration of just one component higher than the values listed in Table 3-2, then the TCLP model must be applied.

Table 3-2. RCRA Toxicity Limits by TCLP and Corresponding Glass Oxide Concentration (see text)

Element	Ag	As	Ba	Cd	Cr	Hg	Ni	Pb	Se
RCRA Toxicity Limit (mg/L)	5	5	100	1	5	0.2	--	5	1
RCRA UTS Limit (mg/L)	0.14	5	21	0.11	0.6	0.025	11	0.75	5.7
Oxide*	Ag₂O	As₂O₃	BaO	CdO	Cr₂O₃	HgO	NiO	PbO	SeO₂
For RCRA Toxicity Limit (wt%)	0.1074	0.1320	2.2330	0.0228	0.1462	0.0043	--	0.1077	0.0281
For RCRA UTS Limit (wt%)	0.0030	0.1320	0.4689	0.0025	0.0175	0.0005	0.2800	0.0162	0.1602

4.0 References

- 55 FR 22520. June 1, 1990. U.S. Environmental Protection Agency, "Land Disposal Regulations for Third Scheduled Wastes; Final Rule," *Federal Register*.
- 61 FR 2338. January 25, 1996. U.S. Environmental Protection Agency, "Land Disposal Restrictions – Supplemental Proposal to Phase IV: Clarification of Bevill Exclusion of Mining Wastes, Changes to the Definition of Solid Waste for Mineral Processing Waste, Treatment Standards for Characteristic Mineral Processing Wastes, and Associated Issues," *Federal Register*.
- 62 FR 26041. May 12, 1997. U.S. Environmental Protection Agency, "Land Disposal Restrictions Phase IV: Second Supplemental Proposal on Treatment Standards for Metal Wastes and Mineral Processing Wastes, Mineral Processing and Bevill Exclusion Issues, and the Use of Hazardous Wastes as Fill – Supplemental Proposed Rule," *Federal Register*.
- American Society for Testing and Materials (ASTM). 1998. "Standard Test Methods for Determining Chemical Durability of Nuclear Waste Glasses: Product Consistency Test (PCT)," ASTM-C-1285-97, *1998 Annual Book of ASTM Standards*, West Conshohocken, PA.
- Bulkley SA, and JD Vienna. 1997. "Composition Effects on Viscosity and Chemical Durability of Simulated Plutonium Residue Glasses," *Mat. Res. Soc. Symp. Proc.* 465:1243–50.
- Crum JV, MJ Schweiger, P Hrma, and JD Vienna. 1997. "Liquidus Temperature Model for Hanford High-Level Waste Glasses with High Concentrations of Zirconia," *Mat. Res. Soc. Symp. Proc.* 465:79–85.
- Ferrara DM, CL Crawford, BC Ha, and NE Bibler. 1998. "Vitrification of Three Low-Activity Radioactive Waste Streams from Hanford." In: *Proceedings of the International Conference on Decommissioning and Decontamination and on Nuclear and Hazardous Waste Management*, Vol. 1, 706–713.
- Fu SS, H Gan, IS Muller, IL Pegg, and PB Macedo. 1997. "Optimization of Savannah River M-Area Mixed Waste for Vitrification." In: *MRS Symposium Proceedings*, Vol. 465, 139-146.
- Fu SS, and IL Pegg. 1998. "Glass Formulation and Testing with TWRS HLW Simulants, VSL Final Report." Vitreous State Laboratory, The Catholic University of America, Washington D. C.
- Gan H, and IL Pegg. 2002. "Effect of Glass Composition on the Leaching Behavior of HLW Glasses under TCLP Conditions," *Ceram. Trans.* 132:335-344.
- Hrma, PR, GF Piepel, MJ Schweiger, DE Smith, DS Kim, PE Redgate, JD Vienna, CA LoPresti, DB Simpson, DK Peeler, and MH Langowski. 1994. *Property/Composition Relationships for Hanford High-Level Waste Glasses Melting at 1150°C*. PNL-10359, Vol. 1 and 2, Pacific Northwest Laboratory, Richland, Washington.

Hrma PR, GF Piepel, JD Vienna, SK Cooley, D-S Kim, and RL Russell. 2001. *Database and Interim Glass Property Models for Hanford HLW Glasses*, PNNL-13573, Pacific Northwest National Laboratory, Richland, WA.

Kot WK, and IL Pegg, 2001. "Glass Formulation and Testing with RPP-WTP HLW Simulants - Final Report," VSL-01R2540-2, Vitreous State Laboratory, The Catholic University of America, Washington D. C.

Li H, JD Vienna, P Hrma, DE Smith, and MJ Schweiger. 1997. "Nepheline Precipitation in High-Level Waste Glasses: Compositional Effects and Impacts on the Waste Form Acceptability," *Mat. Res. Soc. Symp. Proc.* 465:261-268.

Muller IS, and IL Pegg. 1998. "Glass Formulation and Testing with TWRS LAW Simulants," Final Report for GTS Durateck Inc. and BNFL Inc., Catholic University of America, Washington D.C.

Muller IS, AC Buechele, and IL Pegg. 2001. "Glass Formulation and Testing with RPP-WTP LAW Simulants - Final Report," VSL-01R3560-2, Vitreous State Laboratory, The Catholic University of America, Washington D. C.

Piepel GF and PE Redgate. 1997. "Mixture Experiment Techniques for Reducing the Number of Components Applied for Modeling Waste Glass Sodium Release," *J. Am. Ceram. Soc.* 80 (12): 3038-3044.

Pickett JB and CM Jantzen. 2002. "TCLP Leaching Prediction from the "THERMO" Model for Borosilicate Glasses," *Ceram. Trans.* 132:323-333.

Vienna JD, RP Thimpke, GF Piepel, DE Smith, ML Elliott, RK Nakaoka, and GW Veazey. 1998. *Glass Development for Treatment of LANL Evaporator Bottoms waste*, PNNL-11865, Pacific Northwest National Laboratory, Richland, WA.

Vienna JD, P Hrma, JV Crum, and M Mika. 2001. "Liquidus Temperature-Composition Model for Multi-Component Glasses in the Fe, Cr, Ni, and Mn Spinel Primary Phase Field," *J. Non-Cryst. Solids* 292:1-24.

Vienna JV, D-S Kim, and P Hrma. 2002. *Database and Interim Glass Property Models for Hanford HLW and LAW Glasses*, PNNL-14060, Pacific Northwest National Laboratory, Richland, Washington.

Appendix A
Glass Composition and TCLP Release Data Collected for This Study

Appendix A. Glass Composition and TCLP Release Data

TWRS LAW Formulation 2 (Ferrara et al. 1998)

Glass ID	Al ₂ O ₃	B ₂ O ₃	CaO	Fe ₂ O ₃	K ₂ O	Li ₂ O	MgO	Na ₂ O	NiO	P ₂ O ₅	SiO ₂	ZrO ₂	Ag ₂ O	As ₂ O ₃
Envelope A	0.0970	0.0430	0.0450	0.0740	0.0230	0.0210	0.0210	0.2			0.41	0.031		
Envelope B	0.0810	0.0810	0.0700	0.0800	0.0037	0.0410	0.0300	0.1			0.44	0.03		
Envelope C	0.0990	0.0300	0.0480	0.0640	0.0037	0.0400	0.0300	0.2			0.42	0.03		

SRS M-Area Mixed Waste (Fu et al 1997)

SRM-20	0.0900	0.1300	0.0060	0.0020	0.0200	0.0010	0.0014	0.27	0.002	0.02	0.46	0		
SRM-21	0.0900	0.1700	0.0060	0.0020	0.0200	0.0010	0.0014	0.23	0.002	0.02	0.46	0		
SRM-22	0.0900	0.2100	0.0060	0.0020	0.0200	0.0010	0.0014	0.19	0.002	0.02	0.46	0		
SRM-12	0.0900	0.1300	0.0050	0.0030	0.0200	0.1100	0.0014	0.17	0.002	0.02	0.44	0.001		
SRM-26	0.0900	0.1600	0.0060	0.0020	0.0200	0.1100	0.0014	0.13	0.002	0.02	0.45	0.001		
SRM-18	0.0900	0.1300	0.0060	0.0020	0.0200	0.0400	0.0014	0.22	0.002	0.02	0.46	0		

TWRS LAW Formulation (Muller and Pegg 1998)

LAWA23	0.0986	0.0423	0.0438	0.0730	0.0310	0.0204	0.0204	0.2	0	0.0008	0.4015	0.0299		
LAWA24	0.1237	0.0611	0.0328	0.0601	0.0548	0.0000	0.0000	0.2004	0.0014	0.0174	0.3543	0.0305		
LAWB29	0.0803	0.0807	0.0703	0.0803	0.0036	0.0408	0.0300	0.1	0	0.0001	0.4393	0.0304		
LAWPC10	0.0988	0.0300	0.0479	0.0630	0.0012	0.0403	0.0300	0.2	0.0004	0.0005	0.4192	0.03		

TWRS HLW Glass Formulation (Fu and Pegg 1998)

HLWD1-08	0.0320	0.0969	0.0000	0.1855	0.0001	0.0291	0.0000	0.0418	0.0121	0.0161	0.3199	0	0	
HLWD1-09	0.0320	0.0485	0.0000	0.1855	0.0001	0.0291	0.0000	0.0903	0.0121	0.0161	0.3199	0	0	
HLWD1-10	0.0301	0.0921	0.0000	0.1756	0.0873	0.0000	0.0000	0.0396	0.0114	0.0152	0.3005	0	0	
HLWD3-03	0.1622	0.0763	0.0763	0.1049	0.0000	0.0315	0.0000	0.0954	0.0017	0.0308	0.2957	0	0	
HLWD3-04	0.1606	0.1606	0.0756	0.0850	0.0126	0.0312	0.0000	0.0945	0.0017	0	0.2362	0	0.0047	
HLWD3-06	0.0378	0.1606	0.0756	0.0472	0.0000	0.0312	0.0000	0.0945	0.0017	0.0305	0.2929	0.1039	0	
HLWD3-08	0.1708	0.0887	0.0147	0.1058	0.0094	0.0000	0.0032	0.2203	0.0034	0.0084	0.2863	0.0016	0.0015	0.0003
EnvDSR1	0.0900	0.0686	0.0558	0.2255	0.0010	0.0294	0.0011	0.1555	0.001	0.0069	0.3143	0	0.0003	

RPP-WTP LAW Formulation (Muller et al. 2001)

LAWA44	0.0620	0.0890	0.0199	0.0698	0.0050		0.0199	0.2		0.00034	0.44553	0.02992	0.00001	
LAWA102S	0.0606	0.1000	0.0507	0.0541	0.0026	0.0250	0.0150	0.14488		0.00133	0.46601	0.03024		
LAWB45	0.0613	0.1234	0.0663	0.0526	0.0026	0.0462	0.0297	0.065		0.0003	0.47859	0.03153		
LAWC21S	0.0613	0.1010	0.0641	0.0648	0.0015	0.0274	0.0151	0.1188		0.00118	0.46765	0.03023		

RPP-WTP HLW Formulation (Kot and Pegg 2001)

HLW98-01	0.1071	0.1062	0.0097	0.1169	0.0043	0.0195	0.0097	0.1305	0.0043	0.0085	0.3213	0.0604	0.0019	0.0005
HLW98-02	0.1106	0.1096	0.0101	0.1207	0.0044	0.0201	0.0101	0.1347	0.0044	0.0087	0.3318	0.0302	0.002	0.0005
HLW98-03	0.1179	0.1000	0.0142	0.0943	0.0024	0.0300	0.0094	0.1179	0.0024	0.0094	0.3943	0.0377	0.0009	0.0005

Appendix A. Glass Composition and TCLP Release Data

TWRS LAW Formulation 2 (Ferrara et al. 1998)

Glass ID	BaO	Bi2O3	CdO	CeO2	Cl	CoO	Cr2O3	Cs2O	CuO	F	Gd2O3	La2O3	MnO2	MnO
Envelope A							0.0001							
Envelope B							0.001							
Envelope C							0.0001							

SRS M-Area Mixed Waste (Fu et al 1997)

SRM-20	0.00028						0.00021						0.00063	
SRM-21	0.00028						0.00021						0.00063	
SRM-22	0.00028						0.00021						0.00063	
SRM-12	0.00028						0.00021						0.00063	
SRM-26	0.00028						0.00021						0.00063	
SRM-18	0.00028						0.00021						0.00063	

TWRS LAW Formulation (Muller and Pegg 1998)

LAWA23	0		0		0.0036		0.0001	0	0	0.0012		0		
LAWA24	0.0001		0.0033		0.0085		0.0034	0	0	0.0112		0.0001		
LAWB29	0		0		0.0029		0.001	0	0	0		0		
LAWPC10	0		0		0.001		0.0001	0	0	0.0001		0		

TWRS HLW Glass Formulation (Fu and Pegg 1998)

HLWD1-08	0.0204	0.0125	0.0209	0.004	0	0.0023	0.004	0.0025	0.0024	0.0152		0.0122	0.0415	
HLWD1-09	0.0204	0.0125	0.0209	0.004	0	0.0023	0.004	0.0025	0.0024	0.0152		0.0122	0.0415	
HLWD1-10	0.0192	0.0118	0.0196	0.0038	0	0.0022	0.0038	0.0023	0.0023	0.0152		0.0115	0.0391	
HLWD3-03	0.039	0.0239	0.0399	0	0	0	0	0.0014	0	0		0	0	
HLWD3-04	0	0	0	0	0.0025	0	0	0.0063	0.0048	0.028		0	0	
HLWD3-06	0.0386	0.0237	0.0395	0	0	0	0	0.0014	0	0		0	0	
HLWD3-08	0.0032	0.0003	0.0047	0.0009	0.0008	0.0009	0.0077	0.001	0.0003	0.0006		0.0013	0.0066	
EnvDSR1	0.0002	0	0	0	0	0	0.0004	0.001	0	0		0	0.0039	

RPP-WTP LAW Formulation (Muller et al. 2001)

LAWA44					0.00652		0.0002	0.00001		0.0001				
LAWA102S					0.00333		0.00018	0.00001		0.00026				
LAWB45					0.00006		0.00073	0.00002		0.00081				
LAWC21S					0.00124		0.0002			0.0006			0.00004	

RPP-WTP HLW Formulation (Kot and Pegg 2001)

HLW98-01	0.0043	0.0004	0.0063	0.0049	0.0011	0.0013	0.0029	0.0014	0.001	0.001		0.0017	0.0097	
HLW98-02	0.0045	0.0004	0.0065	0.0051	0.0011	0.0013	0.003	0.0014	0.001	0.001		0.0017	0.0101	
HLW98-03	0.0024	0.0005	0.0024	0.0024	0.0024	0.0009	0.0014	0.0024	0	0.0005		0.0047	0.0047	

Appendix A. Glass Composition and TCLP Release Data

TWRS LAW Formulation 2 (Ferrara et al. 1998)

Glass ID	MoO	MoO3	Nd2O3	PbO	PdO	ReO2	Rh2O3	RuO2	Sb2O3	Sb2O5	SeO2	SnO	SnO2
Envelope A													
Envelope B													
Envelope C													

SRS M-Area Mixed Waste (Fu et al 1997)

SRM-20													
SRM-21													
SRM-22													
SRM-12													
SRM-26													
SRM-18													

TWRS LAW Formulation (Muller and Pegg 1998)

LAWA23				0									0
LAWA24				0.001									0
LAWB29				0									0
LAWPC10				0.0002									0

TWRS HLW Glass Formulation (Fu and Pegg 1998)

HLWD1-08	0.003		0.0081	0.0048	0	0		0		0	0	0	
HLWD1-09	0.003		0.0081	0.0048	0	0		0		0	0	0	
HLWD1-10	0.0029		0.0076	0.0045	0	0		0		0	0	0	
HLWD3-03	0		0	0	0	0		0		0	0	0	
HLWD3-04	0.0059		0	0.0093	0	0		0		0.0088	0.0057	0	
HLWD3-06	0		0	0	0	0		0		0	0	0	
HLWD3-08	0		0	0.0019	0.0005	0.0003		0.0013		0.0009	0.0009	0	
EnvDSR1	0		0	0.0018	0	0		0		0	0	0	

RPP-WTP LAW Formulation (Muller et al. 2001)

LAWA44				0.00001		0.001							
LAWA102S						0.001							
LAWB45						0.001							
LAWC21S						0.001							

RPP-WTP HLW Formulation (Kot and Pegg 2001)

HLW98-01				0.0022						0.0019	0.0019		
HLW98-02				0.0023						0.002	0.002		
HLW98-03			0.0047	0.0024						0.0005	0.0005		

Appendix A. Glass Composition and TCLP Release Data

TWRS LAW Formulation 2 (Ferrara et al. 1998)

Glass ID	SO3	SrO	TeO2	ThO2	TiO2	Tl2O3	U3O8	UO2	UO3	V2O5	WO3	Y2O3	ZnO	Sum
Envelope A													0.033	0.9981
Envelope B													0.04	0.9977
Envelope C													0.033	0.9978

SRS M-Area Mixed Waste (Fu et al 1997)

SRM-20		0.00007			0.0007		0.001							1.0053
SRM-21		0.00007			0.0007		0.001							1.0053
SRM-22		0.00007			0.0007		0.001							1.0053
SRM-12		0.00007			0.0007		0.001							0.9953
SRM-26		0.00007			0.0007		0.001							0.9953
SRM-18		0.00007			0.0007		0.001							0.9943

TWRS LAW Formulation (Muller and Pegg 1998)

LAWA23	0.0004												0.0328	0.9998
LAWA24	0.005												0.0305	0.9996
LAWB29	0.0002	0	0	0	0		0	0				0	0.0399	0.9998
LAWPC10	0.0038	0	0	0	0		0	0				0	0.0332	0.9997

TWRS HLW Glass Formulation (Fu and Pegg 1998)

HLWD1-08	0.0065	0.0306	0	0	0.0087			0.0621			0	0	0	0.9952
HLWD1-09	0.0065	0.0306	0	0	0.0087			0.0621			0	0	0	0.9953
HLWD1-10	0.0061	0.0305	0	0	0.0082			0.0584			0	0	0	1.0008
HLWD3-03	0	0.0182	0	0	0			0			0	0	0	0.9972
HLWD3-04	0.0127	0.0228	0	0	0.017	0.004		0			0	0	0.0041	0.9946
HLWD3-06	0	0.018	0	0	0			0			0	0	0	0.9971
HLWD3-08	0.0032	0.0227	0.0009	0.0008	0.001	0.0032		0.0189			0	0	0.0008	1.0000
EnvDSR1	0	0.0412	0	0	0.0019			0			0	0	0.0001	0.9999

RPP-WTP LAW Formulation (Muller et al. 2001)

LAWA44	0.00095				0.01994								0.02965	0.9999
LAWA102S	0.0068				0.01144								0.03064	1.0041
LAWB45	0.00844												0.03153	1.0000
LAWC21S	0.007				0.01122								0.0302	1.0046

RPP-WTP HLW Formulation (Kot and Pegg 2001)

HLW98-01	0.0043	0.0263	0.0013		0.0013	0.0044							0.0195	0.9999
HLW98-02	0.0044	0.0271	0.0013		0.0013	0.0045							0.0201	1.0000
HLW98-03	0.0024	0.0118	0.0005		0.0005	0.0005				0.0005			0.02	1.0003

Appendix A. Glass Composition and TCLP Release Data

TWRS LAW Formulation 2 (Ferrara et al. 1998)

Glass ID	TCLP B (mg/L)	TCLP Ag (mg/L)	TCLP As (mg/L)	TCLP Ba (mg/L)	TCLP Cd (mg/L)	TCLP Cr (mg/L)	TCLP Ni (mg/L)	TCLP Pb (mg/L)	TCLP Se (mg/L)	TCLP Zn (mg/L)
Envelope A				<3	<1	4.8		<4		
Envelope B				<3	<1	<3		<4		
Envelope C				0.28	0.072	<4		0.5		

SRS M-Area Mixed Waste (Fu et al 1997)

SRM-20						0.08	0.14			
SRM-21						0.03	0.1			
SRM-22						0.06	0.18			
SRM-12							0.18			
SRM-26							0.1			
SRM-18						0.11	0.16			

TWRS LAW Formulation (Muller and Pegg 1998)

LAWA23				<0.98	0.003	<0.0055	<0.0079	0.078		1.29
LAWA24				<0.92	0.275	0.15	0.097	0.078		2.35
LAWB29				<1.0	0.004	0.009	0.02	0.026		1.85
LAWPC10				<0.98	<0.0027	<0.0055	0.02	0.025		2.45

TWRS HLW Glass Formulation (Fu and Pegg 1998)

HLWD1-08				1.18	0.72	<0.006		0.16		
HLWD1-09				1.26	0.83	0.01		0.16		
HLWD1-10				1.55	1.14	0.01		0.21		
HLWD3-03				5.43	5.24	<0.006		0.04		
HLWD3-04				0.76	0.04	0.02		0.76		
HLWD3-06				8.45	9.22	<0.006		0.07		
HLWD3-08				2.19	2.62	2.32		1.02		
EnvDSR1				0.08	<0.003	<0.006		0.12		

RPP-WTP LAW Formulation (Muller et al. 2001)

LAWA44		<0.0031	<0.0490	0.005	<0.0027	<0.0055	<0.0079	<0.0243	<0.0532	1.121
LAWA102S		<0.0031	<0.0490	0.003	<0.0027	0.016	0.017	<0.0243	<0.0532	1.327
LAWB45		<0.0031	0.051	0.004	<0.0027	0.015	0.016	<0.0243	<0.0532	1.014
LAWC21S		<0.0031	<0.0490	0.921	0.005	0.044	0.042	<0.0243	<0.0532	1.121

RPP-WTP HLW Formulation (Kot and Pegg 2001)

HLW98-01	1.98	0.071	0.05	0.285	0.318	0.025	0.136	0.121	0.0532	0.894
HLW98-02	2.23	0.098	0.07	0.317	0.365	0.023	0.17	0.137	0.0532	1.02
HLW98-03	1.007	0.015	0.05	0.091	0.064	0.014	0.052	0.089	0.0532	0.488

Appendix A. Glass Composition and TCLP Release Data

RPP-WTP HLW Formulation (Kot and Pegg 2001)

Glass ID	Al2O3	B2O3	CaO	Fe2O3	K2O	Li2O	MgO	Na2O	NiO	P2O5	SiO2	ZrO2	Ag2O	As2O3
HLW98-04	0.1179	0.1300	0.0142	0.0943	0.0024	0.0000	0.0094	0.1179	0.0024	0.0094	0.3943	0.0377	0.0009	0.0005
HLW98-05	0.1146	0.1300	0.0137	0.1217	0.0023		0.0092	0.1146	0.0023	0.0092	0.4117		0.0009	0.0005
HLW98-06	0.0851	0.1	0.0043	0.1276	0.0043	0.03	0.0085	0.1106	0.0043	0.0064	0.4276	0.0213	0.0009	0.0009
HLW98-07	0.0882	0.1	0.0044	0.1323	0.0044	0.01	0.0088	0.1146	0.0044	0.0066	0.4323	0.022	0.0009	0.0009
HLW98-08	0.0743	0.12	0.0153	0.1226	0.0044	0.03	0.0087	0.0918	0.0044	0.0066	0.4093	0.0219	0.0009	0.0009
HLW98-09	0.0797	0.12	0.004	0.1196	0.004	0.03	0.008	0.0837	0.004	0.006	0.4496	0.0199	0.0008	0.0008
HLW98-12	0.0749	0.15	0.0027	0.1267	0.003	0.07	0.0009	0.0293	0.0046	0.0059	0.4099	0.0388	0.0008	0.0006
HLW98-13	0.0666	0.15	0.0024	0.1126	0.0026	0.03	0.0008	0.106	0.0041	0.0053	0.4088	0.0344	0.0007	0.0005
HLW98-14	0.087	0.12	0.019	0.0876	0.0019	0.03	0.0114	0.1404	0.0016	0.0065	0.4169	0.0031	0.0011	
HLW98-15	0.087	0.15	0.019	0.0876	0.0019	0	0.0114	0.1404	0.0016	0.0065	0.4169	0.0031	0.0011	
HLW98-18	0.0772	0.05	0.0028	0.1296	0.0031	0.07	0.0009	0.0302	0.0048	0.0061	0.5102	0.04		0.0006
HLW98-19	0.0915	0.12	0.02	0.0921	0.002	0	0.012	0.1477	0.0017	0.0068	0.4256	0.0033	0.0012	
HLW98-20	0.0891	0.12	0.0195	0.0978	0.002	0.015	0.0117	0.1438	0.0016	0.0066	0.436	0.0032	0	
HLW98-21	0.0677	0.07	0.0024	0.1136	0.0027	0.06	0.0008	0.0664	0.0042	0.0053	0.5089	0.035		0.0005
HLW98-22	0.0535	0.12	0.0117	0.1462	0.0012	0.03	0.007	0.0863	0.001	0.004	0.4026	0.0019		
HLW98-23	0.0485	0.12	0.0106	0.1324	0.0011	0.03	0.0064	0.0782	0.0009	0.0036	0.4429	0.0017		
HLW98-24	0.0677	0.11	0.0024	0.1136	0.0027	0.06	0.0008	0.0664	0.0042	0.0053	0.4689	0.035		0.0005
HLW98-25	0.0664	0.1	0.0024	0.1114	0.0026	0.06	0.0008	0.0659	0.0041	0.0052	0.4688	0.0343	0.0007	0.0005
HLW98-26	0.0781	0.07	0.0026	0.1305	0.0018	0.065	0.0007	0.0611	0.0057	0.0013	0.4626	0.0279		0.0004
HLW98-27B	0.0781	0.04	0.0026	0.1305	0.0018	0.045	0.0007	0.1435	0.0057	0.0013	0.4302	0.0279		0.0004
HLW98-28	0.0781	0.02	0.0026	0.1305	0.0018	0.04	0.0007	0.1435	0.0057	0.0013	0.4552	0.0279	0	0.0004
HLW98-29	0.0781	0.1289	0.0026	0.1305	0.0018	0.04	0.0007	0.0796	0.0057	0.0013	0.4102	0.0279	0	0.0004
HLW98-30	0.0781	0.1	0.0026	0.1097	0.0018	0.06	0.0007	0.0661	0.0057	0.0013	0.4534	0.0279	0	0.0004
HLW98-31	0.074	0.1	0.0025	0.1039	0.0017	0.06	0.0006	0.0659	0.0054	0.0013	0.4553	0.0356	0	0.0004
HLW98-32A	0.1368	0.09	0.0024	0.111	0.0005	0.07	0.0007	0.0358	0.0067	0.0005	0.455	0.0146	0	0.0004
HLW98-33	0.1003	0.07	0.0067	0.1092	0.0003	0.03	0.002	0.0879	0.0014	0.0014	0.3773	0.0011	0.0022	0
HLW98-34	0.1078	0.07	0.0071	0.1173	0.0003	0.04	0.0022	0.0936	0.0015	0.0015	0.4089	0.0012	0.0024	0
HLW98-41	0.0343	0.03	0.0065	0.0677	0.001	0.05	0.0008	0.1404	0.0033	0.0048	0.3628	0.0698	0.0009	0
HLW98-42	0.0797	0.085	0.0025	0.1152	0.0006	0.07	0.0007	0.0889	0.0069	0.0006	0.4477	0.0151	0.0004	0.0004
HLW98-43	0.0325	0.05	0.0062	0.0641	0.001	0.06	0.0008	0.1275	0.0032	0.0045	0.3666	0.0661	0.0009	0
HLW98-44	0.0325	0.07	0.0062	0.0641	0.001	0.06	0.0008	0.1025	0.0032	0.0045	0.3716	0.0661	0.0009	0
HLW98-47	0.0287	0.075	0.0055	0.0567	0.0009	0.07	0.0007	0.1014	0.0028	0.004	0.4016	0.0584	0.0008	0
HLW98-51R	0.0238	0.09	0.0045	0.047	0.0007	0.05	0.0006	0.086	0.0023	0.0033	0.4783	0.0485	0.0007	0
HLW98-54	0.0797	0.1	0.0025	0.1152	0.0006	0.06	0.0007	0.0564	0.0069	0.0006	0.4752	0.0151	0.0004	0.0004
HLW98-58	0.0763	0.04	0.0061	0.1208	0.0003	0.05	0.0012	0.1376	0.0078	0.0025	0.4787	0.0166	0.0002	0
HLW98-59	0.08	0.04	0.0025	0.1156	0.0006	0.05	0.0007	0.1315	0.007	0.0006	0.4775	0.0152	0.0004	0.0004
HLW98-61	0.077	0.04	0.0049	0.1224	0.0003	0.05	0.0012	0.1391	0.0076	0.0046	0.4708	0.0147	0.0002	0
HLW99-01	0	0.05	0.07	0.02	0.01	0.035	0.02	0.05	0.03	0	0.55	0	0.0025	0.002
HLW99-02	0	0.2	0	0.125	0.01	0	0	0.2	0	0.027	0.3	0	0.0025	0.002

Appendix A. Glass Composition and TCLP Release Data

RPP-WTP HLW Formulation (Kot and Pegg 2001)

Glass ID	BaO	Bi2O3	CdO	CeO2	Cl	CoO	Cr2O3	Cs2O	CuO	F	Gd2O3	La2O3	MnO2	MnO
HLW98-04	0.0024	0.0005	0.0024	0.0024	0.0024	0.0009	0.0014	0.0024		0.0005		0.0047	0.0047	
HLW98-05	0.0023	0.0005	0.0046	0.0023	0.0023	0.0009	0.0014	0.0023		0.0005		0.0046	0.0046	
HLW98-06	0.0043	0.0004	0.0034	0.0013	0.0009		0.0017	0.0017	0.0009	0.0009		0.0009	0.0043	
HLW98-07	0.0044	0.0004	0.0035	0.0013	0.0009		0.0018	0.0018	0.0009	0.0009		0.0009	0.0044	
HLW98-08	0.0044	0.0004	0.0035	0.0013	0.0009		0.0017	0.0063	0.0009	0.0009		0.0009	0.0044	
HLW98-09	0.004	0.0004	0.0032	0.0012	0.0008		0.0016	0.0032	0.0008	0.0008		0.0008	0.004	
HLW98-12	0.0006		0.0053	0.0012	0.0001		0.0009	0.0048	0.0004	0.0005		0.0037	0.0039	
HLW98-13	0.0005		0.0047	0.0011	0.0001		0.0008	0.0042	0.0004	0.0005		0.0032	0.0035	
HLW98-14	0.0059	0.0006	0.0004		0.0007		0.0018	0.0078				0.0004	0.0042	
HLW98-15	0.0059	0.0006	0.0004		0.0007		0.0018	0.0078				0.0004	0.0042	
HLW98-18	0.0006		0.0054	0.0012	0.0001		0.001	0.0044	0.0004	0.0006		0.0038	0.004	
HLW98-19	0.0062	0.0006	0.0004		0.0007		0.0019	0.0082				0.0004	0.0044	
HLW98-20	0.0061	0.0006	0.0004		0.0007		0.0018	0.0038				0.0004	0.0043	
HLW98-21	0.0005		0.0048	0.0011	0.0001		0.0009	0.0039	0.0004	0.0005		0.0033	0.0035	
HLW98-22	0.0036	0.0004	0.0002		0.0004		0.0011	0.0023				0.0003	0.0026	
HLW98-23	0.0033	0.0003	0.0002		0.0004		0.001	0.0021				0.0002	0.0023	
HLW98-24	0.0005		0.0048	0.0011	0.0001		0.0009	0.0039	0.0004	0.0005		0.0033	0.0035	
HLW98-25	0.0005		0.0047	0.0011	0.0001		0.0008	0.0038	0.0004	0.0005		0.0032	0.0192	
HLW98-26	0.0004		0.0039	0.0009	0.0001		0.0005	0.0008	0.0003	0.0004		0.0034	0.0271	
HLW98-27B	0.0004		0.0039	0.0009	0.0001		0.0005	0.0008	0.0003	0.0004		0.0034	0.0271	
HLW98-28	0.0004		0.0039	0.0009	0.0001	0	0.0005	0.0008	0.0003	0.0004		0.0034	0.0271	0
HLW98-29	0.0004		0.0039	0.0009	0.0001	0	0.0005	0.0008	0.0003	0.0004		0.0034	0.0271	0
HLW98-30	0.0004		0.0039	0.0009	0.0001	0	0.0005	0.0008	0.0003	0.0004		0.0034	0.0271	0
HLW98-31	0.0004		0.0037	0.0008	0.0001	0	0.0004	0.0008	0.0003	0.0004		0.0032	0	0.0303
HLW98-32A	0.0003		0.0078	0.0004	0.0001	0	0.0008	0.0009	0.0002	0.0001		0.0031	0.0141	0
HLW98-33	0.0006		0.0004	0.0003	0.0003	0	0.0015	0.0009	0	0.0003		0.001	0	0.0664
HLW98-34	0.0007		0.0004	0.0003	0.0002	0	0.0016	0.001	0	0.0002		0.0011	0	0.0444
HLW98-41	0.0003		0.0009	0.0012	0	0	0.002	0	0.0004	0		0.0003	0	0.0372
HLW98-42	0.0003		0.0081	0.0005	0	0	0.0008	0.0009	0.0002	0.0002		0.0032	0.0146	0
HLW98-43	0.0003		0.0008	0.0011	0	0	0.0019	0	0.0004	0		0.0003	0	0.0352
HLW98-44	0.0003	0	0.0008	0.0011	0	0	0.0019	0	0.0004	0		0.0003		0.0352
HLW98-47	0.0002	0	0.0007	0.001	0	0	0.0017	0	0.0003	0		0.0002		0.0311
HLW98-51R	0.0002	0	0.0006	0.0008	0	0	0.0014	0	0.0003	0		0.0002		0.0258
HLW98-54	0.0003		0.0081	0.0005	0	0	0.0008	0.0009	0.0002	0.0002		0.0032	0	0.0146
HLW98-58	0.0004	0	0.0137	0.0008	0.0005	0.0001	0.0011	0	0	0.0001		0.0031		0.0097
HLW98-59	0.0003		0.0082	0.0005	0.0002	0	0.0008	0.0009	0.0002	0.0002		0.0033	0	0.0147
HLW98-61	0.0004	0	0.0139	0.0006	0.0003	0.0001	0.0011	0	0.0003	0.0001		0.003		0.0103
HLW99-01	0.04	0.02	0.03	0.002	0.002	0.002	0	0.002	0.002	0.002		0.002	0.002	
HLW99-02	0	0	0	0.002	0.002	0.002	0.0045	0.002	0.002	0.002		0.002	0.002	

Appendix A. Glass Composition and TCLP Release Data

RPP-WTP HLW Formulation (Kot and Pegg 2001)

Glass ID	MoO	MoO3	Nd2O3	PbO	PdO	ReO2	Rh2O3	RuO2	Sb2O3	Sb2O5	SeO2	SnO	SnO2
HLW98-04			0.0047	0.0024						0.0005	0.0005		
HLW98-05			0.0046	0.0023						0.0005	0.0005		
HLW98-06				0.0043						0.0043	0.0026		
HLW98-07				0.0044						0.0044	0.0026		
HLW98-08			0.0044	0.0026						0.0022	0.0026		
HLW98-09			0.004	0.0024						0.002	0.0024		
HLW98-12				0.0005						0.003	0.0021		
HLW98-13				0.0004						0.0027	0.0019		
HLW98-14				0.0027									
HLW98-15				0.0027									
HLW98-18				0.0005						0.0031	0.0022		
HLW98-19				0.0028									
HLW98-20				0.0027									
HLW98-21				0.0004						0.0027	0.0019		
HLW98-22				0.0016									
HLW98-23				0.0015									
HLW98-24				0.0004						0.0027	0.0019		
HLW98-25				0.0004						0.0027	0.0019		
HLW98-26				0.0016						0.0022	0.0015		
HLW98-27B				0.0016						0.0022	0.0015		
HLW98-28			0	0.0016	0		0	0		0.0022	0.0015		0
HLW98-29			0	0.0016	0		0	0		0.0022	0.0015		0
HLW98-30			0	0.0016	0		0	0		0.0022	0.0015		0
HLW98-31			0	0.0015	0		0	0		0.0021	0.0015		0
HLW98-32A			0	0.0007	0		0	0		0.0034	0.0006		0
HLW98-33			0	0.002	0		0	0		0	0		0
HLW98-34			0	0.0022	0		0	0		0	0		0
HLW98-41			0.0008	0.0022	0.0002		0.0005	0.0002		0	0		0.001
HLW98-42			0	0.0007	0		0	0		0.0036	0.0006		0
HLW98-43			0.0008	0.0021	0.0002		0.0004	0.0002		0	0		0.0009
HLW98-44	0		0.0008	0.0021	0.0002		0.0004	0.0002		0	0		0.0009
HLW98-47	0		0.0007	0.0019	0.0001		0.0004	0.0002		0	0		0.0008
HLW98-51R	0		0.0006	0.0016	0.0001		0.0003	0.0002		0	0		0.0007
HLW98-54			0	0.0007	0		0	0		0.0036	0.0006		0
HLW98-58	0		0.0002	0.0003	0		0	0		0	0		0
HLW98-59			0	0.0007	0		0	0		0.0036	0.0006		0
HLW98-61	0		0.0022	0.0011	0.0001		0	0		0	0		0.0016
HLW99-01				0.01	0.0004		0.0008	0.0013		0.002	0.002		
HLW99-02				0	0.0004		0.0008	0.0013		0.002	0.002		

Appendix A. Glass Composition and TCLP Release Data

RPP-WTP HLW Formulation (Kot and Pegg 2001)

Glass ID	SO3	SrO	TeO2	ThO2	TiO2	Tl2O3	U3O8	UO2	UO3	V2O5	WO3	Y2O3	ZnO	Sum
HLW98-04	0.0024	0.0118	0.0005		0.0005	0.0005				0.0005			0.02	1.0003
HLW98-05	0.0023	0.0115	0.0005		0.0005	0.0005				0.0005	0		0.02	1.0007
HLW98-06	0.0021	0.0085	0.0013		0.0013	0.0021				0.0009	0.0009		0.02	1.0008
HLW98-07	0.0022	0.0088	0.0013		0.0013	0.0022				0.0009	0.0009		0.02	1.0000
HLW98-08	0.0022	0.0229	0.0014		0.0013	0.0022				0.0009	0.0009		0.02	1.0003
HLW98-09	0.002	0.0104	0.0012		0.0012	0.002				0.0008	0.0008		0.02	1.0001
HLW98-12	0.0038	0.0175	0.002		0.0009	0.006			0.005				0.02	1.0003
HLW98-13	0.0033	0.0156	0.0018		0.0008	0.0053			0.0044				0.02	1.0000
HLW98-14	0.0013	0.0275											0.02	0.9998
HLW98-15	0.0013	0.0275											0.02	0.9998
HLW98-18	0.0039	0.0143	0.0021		0.0009	0.0062							0.02	1.0002
HLW98-19	0.0014	0.029											0.02	0.9999
HLW98-20	0.0014	0.0116											0.02	1.0001
HLW98-21	0.0034	0.0125	0.0018		0.0008								0.02	1.0000
HLW98-22	0.0008	0.1013											0.02	1.0000
HLW98-23	0.0007	0.0917											0.02	1.0000
HLW98-24	0.0034	0.0125	0.0018		0.0008								0.02	1.0000
HLW98-25	0.0033	0.0117	0.0018		0.0008								0.02	1.0000
HLW98-26	0.0026	0.0245	0.0015		0.0007								0.02	1.0001
HLW98-27B	0.0026	0.0245	0.0015		0.0007								0.02	1.0001
HLW98-28	0.0026	0.0245	0.0015	0	0.0007			0					0.02	1.0001
HLW98-29	0.0026	0.0245	0.0015	0	0.0007			0					0.02	1.0001
HLW98-30	0.0026	0.0245	0.0015	0	0.0007			0					0.02	1.0001
HLW98-31	0.0025	0.0232	0.0014	0	0.0006			0					0.02	0.9998
HLW98-32A	0.0002	0.0226	0.0002	0	0			0					0.02	0.9999
HLW98-33	0.0003	0.1156	0	0	0.0004			0					0.02	0.9998
HLW98-34	0.0002	0.0735	0	0	0.0004			0					0.02	1.0000
HLW98-41	0	0.049	0	0.0591	0.0002			0.0521					0.02	0.9999
HLW98-42	0.0003	0.0234	0.0002	0	0			0.0087					0.02	1.0000
HLW98-43	0	0.0464	0	0.056	0.0002			0.0494					0.02	1.0000
HLW98-44	0	0.0464	0	0.056	0.0002	0		0.0494		0	0	0	0.02	1.0000
HLW98-47	0	0.041	0	0.0494	0.0002	0		0.0436		0	0	0	0.02	1.0000
HLW98-51R	0	0.034	0	0.041	0.0002	0		0.0362		0	0	0	0.02	0.9999
HLW98-54	0.0003	0.0234	0.0002	0	0			0.0087					0.02	1.0000
HLW98-58	0.0003	0.0136	0	0.0001	0.0001	0		0.0173		0	0	0.0001	0.0005	1.0001
HLW98-59	0.0003	0.0235	0.0002	0	0			0					0.02	1.0002
HLW98-61	0.0002	0.015	0	0.0001	0.0001	0		0.0162		0	0	0.0001	0.0004	1.0000
HLW99-01	0	0.002	0.002	0	0.01	0.002		0			0.002		0.02	1.0000
HLW99-02	0.0045	0.002	0.002	0.0018	0	0.002		0.0721			0.002		0.02	0.9999

Appendix A. Glass Composition and TCLP Release Data

RPP-WTP HLW Formulation (Kot and Pegg 2001)

Glass ID	TCLP B (mg/L)	TCLP Ag (mg/L)	TCLP As (mg/L)	TCLP Ba (mg/L)	TCLP Cd (mg/L)	TCLP Cr (mg/L)	TCLP Ni (mg/L)	TCLP Pb (mg/L)	TCLP Se (mg/L)	TCLP Zn (mg/L)
HLW98-04	1.391	0.013	0.05	0.097	0.067	0.019	0.05	0.087	0.0532	0.505
HLW98-05	1.226	0.015	0.05	0.082	0.116	0.012	0.04	0.09	0.0532	0.45
HLW98-06	0.804	0.014	0.05	0.112	0.072	0.01	0.07	0.08	0.0532	0.44
HLW98-07	0.67	0.017	0.05	0.098	0.06	<0.006	0.04	0.08	0.0532	0.35
HLW98-08	1.05	0.03	0.05	0.13	0.08	0.01	0.08	0.07	0.0532	0.46
HLW98-09	0.98	0.02	0.05	0.22	0.07	<0.01	0.06	0.06	0.0532	0.42
HLW98-12	1.04	0.02	0.05	0.03	0.11	0.01	0.06	<0.03	0.0532	0.401
HLW98-13	1.975	0.033	0.012	0.053	0.179	0.01	0.111	0.261	0.038	0.77
HLW98-14	1.92	0.037	0.075	0.303	0.05	0.02	0.05	0.11	0.0532	0.79
HLW98-15	1.96	0.029	0.08	0.224	0.03	0.01	0.03	0.1	0.0532	0.54
HLW98-18	0.128	0.002	0.017	0.026	0.076	0.011	0.031	<0.03	0.0532	0.007
HLW98-19	1.28	0.023	0.05	0.228	0.01	0.01	0.015	0.08	0.0532	0.529
HLW98-20	1.447	<0.004	0.05	0.208	0.009	0.008	0.032	0.09	0.0532	0.531
HLW98-21	0.492	<0.003	0.05	0.022	0.058	<0.006	0.04	0.036	0.0532	0.246
HLW98-22	1.48	<0.003	0.05	0.2	0.008	0.01	0.04	0.065	0.0532	0.59
HLW98-23	1.19	<0.003	0.05	0.16	0.004	<0.006	0.01	0.057	0.0532	0.51
HLW98-24	0.592	<0.003	0.05	0.027	0.071	<0.006	0.046	<0.03	0.0532	0.29
HLW98-25	0.723	0.014	0.05	0.039	0.091	0.009	0.06	<0.03	0.0532	0.343
HLW98-26	0.27	0.01	0.05	0.02	0.06	<0.006	0.06	0.04	0.0532	0.34
HLW98-27B	0.37	<.0031	0.05	0.04	0.09	0.03	0.11	0.06	0.0532	0.45
HLW98-28	0.17	<.0031	0.05	0.03	0.08	0.02	0.09	0.07	0.0532	0.37
HLW98-29	1.07	<.0031	0.05	0.03	0.08	0.01	0.1	0.04	0.0532	0.41
HLW98-30	0.71	0.01	0.06	0.16	0.15	0.01	0.15	0.03	0.0532	0.41
HLW98-31	0.62	<0.0031	0.05	0.03	0.07	0.02	0.09	0.03	0.09	0.33
HLW98-32A	0.458	<0.0031	0.061	0.097	0.172	<0.0055	0.088	0.026	0.0532	0.337
HLW98-33	0.402	0.07	0.05	0.118	0.014	0.007	0.034	0.203	0.0532	0.607
HLW98-34	0.891	0.064	0.05	0.193	0.079	0.012	0.107	0.081	0.0532	0.547
HLW98-41	0.976	0.02	0.05	0.126	0.082	0.024	0.291	0.162	0.0532	1.475
HLW98-42	1.456	0.02	NA	0.09	0.484	0.011	0.179	0.635	NA	0.692
HLW98-43	1.663	0.06	NA	0.122	0.077	0.017	0.213	0.242	NA	1.581
HLW98-44	2.087	0.065	NA	0.106	0.072	0.013	0.201	0.249	NA	1.449
HLW98-47	2.48	0.061	NA	0.106	0.066	0.011	0.183	0.232	NA	1.636
HLW98-51R	1.453	0.025	0.05	0.038	0.029	0.02	0.247	0.101	0.068	3.23
HLW98-54	0.98	0.014	0.05	0.041	0.203	0.014	0.187	0.06	0.062	1.479
HLW98-58	0.353	<0.0031	0.05	0.465	0.268	<0.0055	0.11	0.081	0.0532	0.13
HLW98-59	0.322	0.007	0.118	0.469	0.157	<0.0055	0.095	<0.0243	0.0532	0.422
HLW98-61	0.344	<0.0031	<0.049	0.994	0.19	<0.0055	0.079	0.034	<0.0532	0.207
HLW99-01	0.515	0.068	0.049	1.283	0.875	<0.0055	0.66	0.111	0.0532	0.598
HLW99-02	225.164	0.079	0.049	0.053	0.171	0.573	0.357	0.4	0.108	38.928

Appendix A. Glass Composition and TCLP Release Data

RPP-WTP HLW Formulation (Kot and Pegg 2001)

Glass ID	Al2O3	B2O3	CaO	Fe2O3	K2O	Li2O	MgO	Na2O	NiO	P2O5	SiO2	ZrO2	Ag2O	As2O3
HLW99-03	0.11	0.2	0	0.02	0.01	0.065	0.02	0.05	0.03	0	0.3	0.03	0.0025	0.002
HLW99-04	0.11	0.05	0	0.02	0.01	0.07	0	0.05	0	0.03	0.49	0.023	0.0025	0.002
HLW99-05	0	0.06	0	0.02	0.01	0.01	0.02	0.2	0.03	0.0184	0.31	0.1	0.0025	0.002
HLW99-06	0.11	0.05	0.07	0.02	0.01	0	0	0.2	0	0	0.48	0.005	0.0025	0.002
HLW99-07	0	0.2	0.07	0.02	0.01	0.035	0	0.15	0	0.0037	0.345	0.1	0.0025	0.002
HLW99-08	0	0.05	0.07	0.125	0.01	0.07	0	0.08	0	0.03	0.38	0.038	0.0025	0.002
HLW99-09	0	0.2	0.07	0.02	0.01	0.035	0.0173	0.05	0.0259	0.03	0.3	0	0.0025	0.002
HLW99-10	0	0.05	0.063	0.02	0.01	0	0	0.13	0	0.03	0.55	0	0.0025	0.002
HLW99-11	0.11	0.2	0.07	0.02	0.01	0.007	0	0.106	0	0.03	0.3	0	0.0025	0.002
HLW99-12	0.01	0.2	0.07	0.125	0.01	0.035	0	0.05	0	0	0.445	0	0.0025	0.002
HLW99-13	0	0.05	0	0.02	0.01	0	0.02	0.2	0.03	0.0061	0.48	0	0.0025	0.002
HLW99-14	0	0.2	0	0.125	0.01	0.035	0.02	0.05	0.03	0	0.3317	0.0333	0.0025	0.002
HLW99-15	0	0.2	0.035	0.02	0.01	0.01	0.02	0.2	0.03	0	0.31	0	0.0025	0.002
HLW99-16	0	0.05	0	0.125	0.01	0.07	0.0113	0.05	0.0169	0	0.55	0	0.0025	0.002
HLW99-17	0	0.05	0.07	0.02	0.01	0.01	0	0.2	0	0.03	0.363	0.1	0.0025	0.002
HLW99-18	0.11	0.07	0.07	0.02	0.01	0.01	0.0156	0.2	0.0234	0	0.3	0.03	0.0025	0.002
HLW99-19	0.085	0.2	0	0.125	0.01	0.053	0	0.05	0	0.03	0.3	0	0.0025	0.002
HLW99-20	0.053	0.09	0	0.02	0.01	0.07	0.02	0.08	0.03	0.03	0.34	0	0.0025	0.002
HLW99-21	0.065	0.05	0.07	0.02	0.01	0.07	0	0.075	0	0	0.535	0.05	0.0025	0.002
HLW99-22	0.04	0.2	0	0.023	0.01	0	0	0.15	0	0.03	0.3	0.1	0.0025	0.002
HLW99-23	0	0.05	0.07	0.02	0.01	0	0.0179	0.2	0.0268	0.03	0.33	0	0.0025	0.002
HLW99-24R	0	0.155	0.07	0.11	0.01	0	0	0.2	0	0	0.3	0.1	0.0025	0.002
HLW99-25	0.11	0.09	0.07	0.1	0.01	0.07	0.0094	0.08	0.0141	0	0.34	0	0.0025	0.002
HLW99-26	0	0.05	0	0.073	0.01	0.035	0.02	0.05	0.03	0.03	0.445	0	0.0025	0.002
HLW99-27	0	0.16	0.07	0.125	0.01	0.07	0.02	0.05	0.03	0	0.3	0	0.0025	0.002
HLW99-28	0.025	0.16	0.07	0.02	0.01	0	0.02	0.12	0.03	0	0.3	0.08	0.0025	0.002
HLW99-29	0	0.05	0	0.02	0.01	0.03	0.0123	0.13	0.0184	0	0.52	0.0867	0.0025	0.002
HLW99-30	0.04	0.125	0	0.02	0.01	0.01	0.0056	0.2	0.0084	0	0.395	0.1	0.0025	0.002
HLW99-31	0.11	0.183	0	0.02	0.01	0	0	0.2	0	0.03	0.3	0	0.0025	0.002
HLW99-32	0	0.05	0	0.125	0.01	0.0463	0.0029	0.1275	0.0043	0.03	0.3563	0.085	0.0025	0.002
HLW99-33	0	0.2	0.07	0.02	0.01	0.07	0	0.08	0	0.03	0.373	0	0.0025	0.002
HLW99-34	0	0.05	0	0.0297	0.01	0.07	0	0.08	0	0.03	0.53	0.0533	0.0025	0.002
HLW99-35	0.0914	0.05	0.04	0.07	0.01	0.0536	0	0.0729	0	0	0.5086	0.0486	0.0025	0.002
HLW99-36	0	0.2	0.0133	0.125	0.01	0.07	0.0017	0.08	0.0025	0	0.38	0.0533	0.0025	0.002
HLW99-37	0.11	0.07	0	0.02	0.01	0.05	0.0094	0.12	0.0141	0	0.49	0	0.0025	0.002
HLW99-38	0	0.05	0.07	0.02	0.01	0.07	0.0137	0.05	0.0206	0.03	0.41	0.0333	0.0025	0.002
HLW99-39	0	0.125	0.07	0.125	0.01	0.04	0.0013	0.14	0.0019	0	0.425	0	0.0025	0.002
HLW99-40	0.11	0.2	0	0.0675	0.01	0	0	0.12	0	0	0.4075	0.03	0.0025	0.002
HLW99-41	0.0516	0.1171	0.0303	0.0614	0.01	0.0317	0.0062	0.1129	0.0094	0.0124	0.3973	0.0322	0.0025	0.002

Appendix A. Glass Composition and TCLP Release Data

RPP-WTP HLW Formulation (Kot and Pegg 2001)

Glass ID	BaO	Bi2O3	CdO	CeO2	Cl	CoO	Cr2O3	Cs2O	CuO	F	Gd2O3	La2O3	MnO2	MnO
HLW99-03	0.04	0.02	0.03	0.002	0.002	0.002	0	0.002	0.002	0.002		0.002	0.002	
HLW99-04	0	0	0	0.002	0.002	0.002	0.005	0.002	0.002	0.002		0.002	0.002	
HLW99-05	0.04	0.02	0.03	0.002	0.002	0.002	0.0031	0.002	0.002	0.002		0.002	0.002	
HLW99-06	0	0	0	0.002	0.002	0.002	0	0.002	0.002	0.002		0.002	0.002	
HLW99-07	0	0	0	0.002	0.002	0.002	0.0006	0.002	0.002	0.002		0.002	0.002	
HLW99-08	0	0	0	0.002	0.002	0.002	0.005	0.002	0.002	0.002		0.002	0.002	
HLW99-09	0.0345	0.0173	0.0259	0.002	0.002	0.002	0.005	0.002	0.002	0.002		0.002	0.002	
HLW99-10	0	0	0	0.002	0.002	0.002	0.005	0.002	0.002	0.002		0.002	0.002	
HLW99-11	0	0	0	0.002	0.002	0.002	0.005	0.002	0.002	0.002		0.002	0.002	
HLW99-12	0	0	0	0.002	0.002	0.002	0	0.002	0.002	0.002		0.002	0.002	
HLW99-13	0.04	0.02	0.03	0.002	0.002	0.002	0.001	0.002	0.002	0.002		0.002	0.002	
HLW99-14	0.04	0.02	0.03	0.002	0.002	0.002	0	0.002	0.002	0.002		0.002	0.002	
HLW99-15	0.04	0.02	0.03	0.002	0.002	0.002	0	0.002	0.002	0.002		0.002	0.002	
HLW99-16	0.0225	0.0113	0.0169	0.002	0.002	0.002	0	0.002	0.002	0.002		0.002	0.002	
HLW99-17	0	0	0	0.002	0.002	0.002	0.005	0.002	0.002	0.002		0.002	0.002	
HLW99-18	0.0313	0.0156	0.0234	0.002	0.002	0.002	0	0.002	0.002	0.002		0.002	0.002	
HLW99-19	0	0	0	0.002	0.002	0.002	0.005	0.002	0.002	0.002		0.002	0.002	
HLW99-20	0.04	0.02	0.03	0.002	0.002	0.002	0.005	0.002	0.002	0.002		0.002	0.002	
HLW99-21	0	0	0	0.002	0.002	0.002	0	0.002	0.002	0.002		0.002	0.002	
HLW99-22	0	0	0	0.002	0.002	0.002	0.005	0.002	0.002	0.002		0.002	0.002	
HLW99-23	0.0358	0.0179	0.0268	0.002	0.002	0.002	0.005	0.002	0.002	0.002		0.002	0.002	
HLW99-24R	0	0	0	0.002	0.002	0.002	0	0.002	0.002	0.002		0.002	0.002	
HLW99-25	0.0188	0.0094	0.0141	0.002	0.002	0.002	0	0.002	0.002	0.002		0.002	0.002	
HLW99-26	0.04	0.02	0.03	0.002	0.002	0.002	0.005	0.002	0.002	0.002		0.002	0.002	
HLW99-27	0.04	0.02	0.03	0.002	0.002	0.002	0	0.002	0.002	0.002		0.002	0.002	
HLW99-28	0.04	0.02	0.03	0.002	0.002	0.002	0	0.002	0.002	0.002		0.002	0.002	
HLW99-29	0.0246	0.0123	0.0184	0.002	0.002	0.002	0	0.002	0.002	0.002		0.002	0.002	
HLW99-30	0.0113	0.0056	0.0084	0.002	0.002	0.002	0	0.002	0.002	0.002		0.002	0.002	
HLW99-31	0	0	0	0.002	0.002	0.002	0.005	0.002	0.002	0.002		0.002	0.002	
HLW99-32	0.0058	0.0029	0.0043	0.002	0.002	0.002	0.005	0.002	0.002	0.002		0.002	0.002	
HLW99-33	0	0	0	0.002	0.002	0.002	0.005	0.002	0.002	0.002		0.002	0.002	
HLW99-34	0	0	0	0.002	0.002	0.002	0.005	0.002	0.002	0.002		0.002	0.002	
HLW99-35	0	0	0	0.002	0.002	0.002	0	0.002	0.002	0.002		0.002	0.002	
HLW99-36	0.0033	0.0017	0.0025	0.002	0.002	0.002	0	0.002	0.002	0.002		0.002	0.002	
HLW99-37	0.0188	0.0094	0.0141	0.002	0.002	0.002	0	0.002	0.002	0.002		0.002	0.002	
HLW99-38	0.0274	0.0137	0.0206	0.002	0.002	0.002	0.005	0.002	0.002	0.002		0.002	0.002	
HLW99-39	0.0025	0.0013	0.0019	0.002	0.002	0.002	0	0.002	0.002	0.002		0.002	0.002	
HLW99-40	0	0	0	0.002	0.002	0.002	0	0.002	0.002	0.002		0.002	0.002	
HLW99-41	0.0125	0.0062	0.0094	0.002	0.002	0.002	0.0021	0.002	0.002	0.002		0.002	0.002	

Appendix A. Glass Composition and TCLP Release Data

RPP-WTP HLW Formulation (Kot and Pegg 2001)

Glass ID	MoO	MoO3	Nd2O3	PbO	PdO	ReO2	Rh2O3	RuO2	Sb2O3	Sb2O5	SeO2	SnO	SnO2
HLW99-03				0.01	0.0004		0.0008	0.0013		0.002	0.002		
HLW99-04				0	0.0004		0.0008	0.0013		0.002	0.002		
HLW99-05				0.01	0.0004		0.0008	0.0013		0.002	0.002		
HLW99-06				0	0.0004		0.0008	0.0013		0.002	0.002		
HLW99-07				0	0.0004		0.0008	0.0013		0.002	0.002		
HLW99-08				0	0.0004		0.0008	0.0013		0.002	0.002		
HLW99-09				0.0086	0.0004		0.0008	0.0013		0.002	0.002		
HLW99-10				0	0.0004		0.0008	0.0013		0.002	0.002		
HLW99-11				0	0.0004		0.0008	0.0013		0.002	0.002		
HLW99-12				0	0.0004		0.0008	0.0013		0.002	0.002		
HLW99-13				0.01	0.0004		0.0008	0.0013		0.002	0.002		
HLW99-14				0.01	0.0004		0.0008	0.0013		0.002	0.002		
HLW99-15				0.01	0.0004		0.0008	0.0013		0.002	0.002		
HLW99-16				0.0056	0.0004		0.0008	0.0013		0.002	0.002		
HLW99-17				0	0.0004		0.0008	0.0013		0.002	0.002		
HLW99-18				0.0078	0.0004		0.0008	0.0013		0.002	0.002		
HLW99-19				0	0.0004		0.0008	0.0013		0.002	0.002		
HLW99-20				0.01	0.0004		0.0008	0.0013		0.002	0.002		
HLW99-21				0	0.0004		0.0008	0.0013		0.002	0.002		
HLW99-22				0	0.0004		0.0008	0.0013		0.002	0.002		
HLW99-23				0.0089	0.0004		0.0008	0.0013		0.002	0.002		
HLW99-24R				0	0.0004		0.0008	0.0013		0.002	0.002		
HLW99-25				0.0047	0.0004		0.0008	0.0013		0.002	0.002		
HLW99-26				0.01	0.0004		0.0008	0.0013		0.002	0.002		
HLW99-27				0.01	0.0004		0.0008	0.0013		0.002	0.002		
HLW99-28				0.01	0.0004		0.0008	0.0013		0.002	0.002		
HLW99-29				0.0061	0.0004		0.0008	0.0013		0.002	0.002		
HLW99-30				0.0028	0.0004		0.0008	0.0013		0.002	0.002		
HLW99-31				0	0.0004		0.0008	0.0013		0.002	0.002		
HLW99-32				0.0014	0.0004		0.0008	0.0013		0.002	0.002		
HLW99-33				0	0.0004		0.0008	0.0013		0.002	0.002		
HLW99-34				0	0.0004		0.0008	0.0013		0.002	0.002		
HLW99-35				0	0.0004		0.0008	0.0013		0.002	0.002		
HLW99-36				0.0008	0.0004		0.0008	0.0013		0.002	0.002		
HLW99-37				0.0047	0.0004		0.0008	0.0013		0.002	0.002		
HLW99-38				0.0069	0.0004		0.0008	0.0013		0.002	0.002		
HLW99-39				0.0006	0.0004		0.0008	0.0013		0.002	0.002		
HLW99-40				0	0.0004		0.0008	0.0013		0.002	0.002		
HLW99-41				0.0031	0.0004		0.0008	0.0013		0.002	0.002		

Appendix A. Glass Composition and TCLP Release Data

RPP-WTP HLW Formulation (Kot and Pegg 2001)

Glass ID	SO3	SrO	TeO2	ThO2	TiO2	Tl2O3	U3O8	UO2	UO3	V2O5	WO3	Y2O3	ZnO	Sum
HLW99-03	0	0.002	0.002	0	0.01	0.002		0			0.002		0.02	1.0000
HLW99-04	0.005	0.002	0.002	0.002	0	0.002		0.08			0.002		0.02	1.0000
HLW99-05	0.0031	0.002	0.002	0.0012	0.01	0.002		0.0492			0.002		0.02	1.0000
HLW99-06	0	0.002	0.002	0	0	0.002		0			0.002		0.02	1.0000
HLW99-07	0.0006	0.002	0.002	0.0002	0	0.002		0.0098			0.002		0.02	0.9999
HLW99-08	0.005	0.002	0.002	0.002	0	0.002		0.08			0.002		0.02	1.0000
HLW99-09	0.005	0.002	0.002	0.002	0.0086	0.002		0.08			0.002		0.02	1.0001
HLW99-10	0.005	0.002	0.002	0.002	0	0.002		0.08			0.002		0.02	1.0000
HLW99-11	0.005	0.002	0.002	0.002	0	0.002		0.08			0.002		0.02	1.0000
HLW99-12	0	0.002	0.002	0	0	0.002		0			0.002		0.02	1.0000
HLW99-13	0.001	0.002	0.002	0.0004	0.01	0.002		0.0164			0.002		0.02	0.9999
HLW99-14	0	0.002	0.002	0	0.01	0.002		0			0.002		0.02	1.0000
HLW99-15	0	0.002	0.002	0	0.01	0.002		0			0.002		0.02	1.0000
HLW99-16	0	0.002	0.002	0	0.0056	0.002		0			0.002		0.02	1.0001
HLW99-17	0.005	0.002	0.002	0.002	0	0.002		0.08			0.002		0.02	1.0000
HLW99-18	0	0.002	0.002	0	0.0078	0.002		0			0.002		0.02	0.9999
HLW99-19	0.005	0.002	0.002	0.002	0	0.002		0.08			0.002		0.02	1.0000
HLW99-20	0.005	0.002	0.002	0.002	0.01	0.002		0.08			0.002		0.02	1.0000
HLW99-21	0	0.002	0.002	0	0	0.002		0			0.002		0.02	1.0000
HLW99-22	0.005	0.002	0.002	0.002	0	0.002		0.08			0.002		0.02	1.0000
HLW99-23	0.005	0.002	0.002	0.002	0.0089	0.002		0.08			0.002		0.02	1.0000
HLW99-24R	0	0.002	0.002	0	0	0.002		0			0.002		0.02	1.0000
HLW99-25	0	0.002	0.002	0	0.0047	0.002		0			0.002		0.02	1.0002
HLW99-26	0.005	0.002	0.002	0.002	0.01	0.002		0.08			0.002		0.02	1.0000
HLW99-27	0	0.002	0.002	0	0.01	0.002		0			0.002		0.02	1.0000
HLW99-28	0	0.002	0.002	0	0.01	0.002		0			0.002		0.02	1.0000
HLW99-29	0	0.002	0.002	0	0.0061	0.002		0			0.002		0.02	0.9999
HLW99-30	0	0.002	0.002	0	0.0028	0.002		0			0.002		0.02	0.9999
HLW99-31	0.005	0.002	0.002	0.002	0	0.002		0.08			0.002		0.02	1.0000
HLW99-32	0.005	0.002	0.002	0.002	0.0014	0.002		0.08			0.002		0.02	1.0001
HLW99-33	0.005	0.002	0.002	0.002	0	0.002		0.08			0.002		0.02	1.0000
HLW99-34	0.005	0.002	0.002	0.002	0	0.002		0.08			0.002		0.02	1.0000
HLW99-35	0	0.002	0.002	0	0	0.002		0			0.002		0.02	1.0001
HLW99-36	0	0.002	0.002	0	0.0008	0.002		0			0.002		0.02	0.9999
HLW99-37	0	0.002	0.002	0	0.0047	0.002		0			0.002		0.02	1.0002
HLW99-38	0.005	0.002	0.002	0.002	0.0069	0.002		0.08			0.002		0.02	1.0001
HLW99-39	0	0.002	0.002	0	0.0006	0.002		0			0.002		0.02	1.0001
HLW99-40	0	0.002	0.002	0	0	0.002		0			0.002		0.02	1.0000
HLW99-41	0.0021	0.002	0.002	0.0008	0.0031	0.002		0.0332			0.002		0.02	1.0000

Appendix A. Glass Composition and TCLP Release Data

RPP-WTP HLW Formulation (Kot and Pegg 2001)

Glass ID	TCLP B (mg/L)	TCLP Ag (mg/L)	TCLP As (mg/L)	TCLP Ba (mg/L)	TCLP Cd (mg/L)	TCLP Cr (mg/L)	TCLP Ni (mg/L)	TCLP Pb (mg/L)	TCLP Se (mg/L)	TCLP Zn (mg/L)
HLW99-03	21.066	0.363	0.055	12.084	8.776	<0.0055	7.382	0.727	0.0532	5.47
HLW99-04	1.841	0.029	0.148	0.13	0.075	0.008	0.064	0.171	0.0532	0.942
HLW99-05	25.881	0.085	0.25	35.742	33.345	1.165	29.936	1.552	0.355	20.134
HLW99-06	0.854	0.09	0.049	0.013	0.006	<0.0055	<0.0079	<0.0243	0.0532	0.813
HLW99-07	177.237	0.088	0.406	0.139	0.18	0.056	0.275	0.502	0.708	40.201
HLW99-08	2.654	0.169	0.089	0.408	0.269	0.022	0.252	0.12	0.121	1.547
HLW99-09	141.596	0.023	0.205	26.083	53.865	0.089	49.261	1.991	0.402	39.512
HLW99-10	1.057	0.087	1.487	0.134	0.076	0.041	0.063	0.153	0.081	0.764
HLW99-11	14.524	0.256	0.049	0.099	0.026	0.073	0.071	0.178	0.164	3.577
HLW99-12	4.293	0.1	0.074	0.197	0.12	<0.0055	0.097	<0.0243	0.0532	1.084
HLW99-13	5.238	0.388	0.049	8.764	6.645	0.026	5.047	2.024	0.266	4.531
HLW99-14	6.386	0.079	0.049	3.804	2.648	0.008	1.945	0.211	0.075	1.63
HLW99-15	203.424	0.577	2.768	99.555	47.236	0.073	65.141	4.868	0.806	12.33
HLW99-16	0.323	0.064	0.049	0.404	0.276	<0.0055	0.207	<0.0243	0.0532	0.309
HLW99-17	19.453	0.028	0.219	0.053	0.057	1.43	0.102	0.185	0.719	16.94
HLW99-18	13.183	0.736	0.053	17.703	11.891	0.02	8.929	0.912	0.195	9.45
HLW99-19	3.47	0.07	0.049	0.048	0.011	0.021	0.022	0.082	0.138	0.96
HLW99-20	20.595	0.128	0.277	17.5	17.884	0.085	14.79	1.998	0.423	10.72
HLW99-21	0.504	0.026	0.049	0.089	0.048	<.0055	0.023	0.049	0.056	0.625
HLW99-22	15.398	0.392	0.049	0.29	0.188	0.085	0.2	0.105	0.185	4.481
HLW99-23	45.81	0.079	0.627	28.944	43.541	4.222	53.192	0.35	1.333	13.138
HLW99-24R	72.622	0.125	0.06	0.27	0.088	0.021	0.141	0.22	0.106	22.953
HLW99-25	3.728	0.072	0.049	2.239	1.626	0.011	0.967	0.156	0.0532	2.102
HLW99-26	0.789	0.033	0.049	2.344	1.521	0.037	1.24	0.492	0.138	1.102
HLW99-27	63.791	0.025	0.063	41.818	30.943	0.006	23.934	0.781	0.0532	18.43
HLW99-28	32.197	0.179	0.103	20.759	16.978	0.009	14.359	0.888	0.085	9.841
HLW99-29	0.589	0.086	0.049	0.719	0.482	<.0055	0.389	0.114	0.0532	0.611
HLW99-30	7.428	0.333	0.049	1.832	1.444	<0.0055	0.962	0.072	0.0532	3.187
HLW99-31	48.052	0.254	0.087	0.111	0.082	0.582	0.203	0.362	0.419	13.152
HLW99-32	1.186	0.088	0.049	0.303	0.185	0.033	0.133	0.079	0.116	1.024
HLW99-33	235.448	0.109	2.427	0.025	0.007	0.085	0.072	0.564	1.917	9.783
HLW99-34	0.0796	0.057	NA	0.041	0.019	0.025	0.011	0.168	NA	0.812
HLW99-35	0.323	0.057	0.049	0.026	0.007	<.0055	<.0079	0.086	0.0532	0.435
HLW99-36	12.656	0.059	0.049	0.666	0.423	<.0055	0.308	0.118	0.0532	3.867
HLW99-37	0.713	0.049	0.049	0.538	0.362	<.0055	0.297	0.126	0.0532	0.596
HLW99-38	5.876	0.678	0.398	8.047	6.407	0.104	5.539	1.188	0.198	5.482
HLW99-39	60.722	0.03	0.157	3.292	2.498	0.014	2.135	0.164	0.095	23.696
HLW99-40	2.496	0.073	0.064	0.011	<0.0027	<0.0055	<0.0079	<0.0243	0.0532	0.607
HLW99-41	3.505	0.194	0.049	1.051	0.759	0.014	0.647	0.162	0.0532	1.475

Appendix A. Glass Composition and TCLP Release Data

RPP-WTP HLW Formulation (Kot and Pegg 2001)

Glass ID	Al2O3	B2O3	CaO	Fe2O3	K2O	Li2O	MgO	Na2O	NiO	P2O5	SiO2	ZrO2	Ag2O	As2O3
HLW99-42	0.11	0.1775	0.045	0.02	0.01	0.035	0	0.05	0	0	0.4675	0.03	0.0025	0.002
HLW99-43	0.085	0.2	0.07	0.125	0.01	0.0675	0	0.085	0	0	0.3025	0	0.0025	0.002
HLW99-44	0.085	0.07	0.07	0.125	0.01	0.01	0	0.2	0	0.0184	0.3	0	0.0025	0.002
HLW99-45	0.1067	0.16	0.07	0.02	0.01	0.07	0.0004	0.05	0.0006	0.03	0.3	0.0333	0.0025	0.002
HLW99-46	0	0.1158	0.07	0.02	0.01	0.07	0.02	0.08	0.03	0	0.3658	0.0533	0.0025	0.002
HLW99-47	0.05	0.05	0.035	0.125	0.01	0.03	0	0.095	0	0	0.55	0	0.0025	0.002
HLW99-48	0.11	0.065	0	0.085	0.01	0	0.02	0.2	0.03	0	0.315	0	0.0025	0.002
HLW99-49	0.0425	0.065	0	0.125	0.01	0	0.0029	0.2	0.0043	0.03	0.315	0.0425	0.0025	0.002
HLW99-50	0.05	0.06	0	0.02	0.01	0.07	0	0.05	0	0.025	0.55	0.0333	0.0025	0.002
HLW99-51R	0	0.2	0.07	0.02	0.01	0	0	0.2	0	0.03	0.3	0.023	0.0025	0.002
HLW99-52	0.025	0.2	0	0.02	0.01	0	0.02	0.16	0.03	0	0.37	0	0.0025	0.002
HLW99-53	0	0.05	0.07	0.125	0.01	0	0.0124	0.12	0.0186	0.015	0.41	0	0.0025	0.002
HLW99-54	0.11	0.05	0	0.02	0.01	0.035	0.0138	0.12	0.0206	0	0.49	0	0.0025	0.002
HLW99-55	0.04	0.05	0.07	0.07	0.01	0.01	0.0094	0.2	0.0141	0	0.32	0.1	0.0025	0.002
HLW99-56R	0.0367	0.05	0	0.125	0.01	0.07	0.02	0.05	0.03	0	0.41	0.0333	0.0025	0.002
HLW99-57	0	0.05	0	0.125	0.01	0.01	0	0.2	0	0	0.47	0.08	0.0025	0.002
HLW99-58	0.11	0.2	0.07	0.02	0.01	0	0.0044	0.2	0.0066	0	0.3	0	0.0025	0.002
HLW99-59	0.11	0.05	0.065	0.02	0.01	0.07	0.02	0.05	0.03	0	0.41	0	0.0025	0.002
HLW99-60	0	0.135	0	0.125	0.01	0.0233	0.0135	0.0733	0.0203	0.03	0.3483	0	0.0025	0.002
HLW99-61	0.025	0.2	0	0.02	0.01	0	0.02	0.16	0.03	0	0.37	0	0.0025	0.002
HLW99-62	0	0.05	0	0.02	0.01	0.03	0.0123	0.13	0.0184	0	0.52	0.0867	0.0025	0.002
HLW99-63	0.0516	0.1171	0.0303	0.0614	0.01	0.0317	0.0062	0.1129	0.0094	0.0124	0.3973	0.0322	0.0025	0.002
HLW99-64	0.053	0.09	0	0.02	0.01	0.07	0.02	0.08	0.03	0.03	0.34	0	0.0025	0.002
HLW99-65	0.11	0.183	0	0.02	0.01	0	0	0.2	0	0.03	0.3	0	0.0025	0.002
HLW99-66	0.0735	0.0525	0.021	0.021	0.0105	0.0315	0	0.0992	0	0.0013	0.5008	0.0315	0.0026	0.0021
HLW99-67	0.0735	0.0525	0.021	0.1176	0.0105	0.0315	0	0.0525	0	0.0013	0.3146	0.0315	0.0026	0.0021
HLW99-68	0.0735	0.0525	0.021	0.1313	0.0105	0.0315	0.0131	0.0704	0.0197	0.0013	0.3145	0.0315	0.0026	0.0021
HLW99-69	0.0735	0.0525	0.021	0.021	0.0105	0.0315	0.0131	0.0525	0.0197	0.0013	0.3146	0.0315	0.0026	0.0021
HLW99-70	0.0735	0.0525	0.021	0.021	0.0105	0.0315	0	0.1139	0	0.0013	0.3495	0.0315	0.0026	0.0021
HLW99-71	0.0735	0.0525	0.021	0.1313	0.0105	0.0315	0	0.0771	0	0.0013	0.4127	0.0315	0.0026	0.0021
HLW99-72	0.0735	0.0525	0.021	0.021	0.0105	0.0315	0.0131	0.0781	0.0197	0.0013	0.4169	0.0315	0.0026	0.0021
HLW99-73	0.0736	0.0525	0.021	0.021	0.0105	0.0315	0	0.1412	0	0.0013	0.4586	0.0315	0.0026	0.0021
HLW99-74	0.0735	0.0525	0.021	0.1313	0.0105	0.0315	0.0066	0.0525	0.0098	0.0013	0.3146	0.0315	0.0026	0.0021
HLW99-75	0.0735	0.0525	0.021	0.1313	0.0105	0.0315	0.0088	0.1051	0.0132	0.0013	0.3142	0.0315	0.0026	0.0021
HLW99-76	0.0735	0.0525	0.021	0.021	0.0105	0.0315	0.0131	0.1051	0.0197	0.0013	0.3142	0.0315	0.0026	0.0021
HLW99-77	0.0735	0.0525	0.021	0.1313	0.0105	0.0315	0	0.1051	0	0.0013	0.3142	0.0315	0.0026	0.0021
HLW99-78	0.0735	0.0525	0.021	0.0562	0.0105	0.0315	0.0044	0.0788	0.0066	0.0013	0.3144	0.0315	0.0026	0.0021
HLW99-79	0.0735	0.0525	0.021	0.021	0.0105	0.0315	0	0.0718	0	0.0013	0.3917	0.0315	0.0026	0.0021
HLW99-80	0.07	0.1	0.02	0.0725	0.01	0.03	0.0125	0.05	0.0188	0.0025	0.3	0.03	0.0025	0.002

RPP-WTP HLW Formulation (Kot and Pegg 2001)

Appendix A. Glass Composition and TCLP Release Data

RPP-WTP HLW Formulation (Kot and Pegg 2001)

Glass ID	BaO	Bi2O3	CdO	CeO2	Cl	CoO	Cr2O3	Cs2O	CuO	F	Gd2O3	La2O3	MnO2	MnO
HLW99-42	0	0	0	0.002	0.002	0.002	0	0.002	0.002	0.002		0.002	0.002	
HLW99-43	0	0	0	0.002	0.002	0.002	0	0.002	0.002	0.002		0.002	0.002	
HLW99-44	0	0	0	0.002	0.002	0.002	0.0031	0.002	0.002	0.002		0.002	0.002	
HLW99-45	0.0008	0.0004	0.0006	0.002	0.002	0.002	0.005	0.002	0.002	0.002		0.002	0.002	
HLW99-46	0.04	0.02	0.03	0.002	0.002	0.002	0	0.002	0.002	0.002		0.002	0.002	
HLW99-47	0	0	0	0.002	0.002	0.002	0	0.002	0.002	0.002		0.002	0.002	
HLW99-48	0.04	0.02	0.03	0.002	0.002	0.002	0	0.002	0.002	0.002		0.002	0.002	
HLW99-49	0.0058	0.0029	0.0043	0.002	0.002	0.002	0.005	0.002	0.002	0.002		0.002	0.002	
HLW99-50	0	0	0	0.002	0.002	0.002	0.0042	0.002	0.002	0.002		0.002	0.002	
HLW99-51R	0	0	0	0.002	0.002	0.002	0.005	0.002	0.002	0.002		0.002	0.002	
HLW99-52	0.04	0.02	0.03	0.002	0.002	0.002	0	0.002	0.002	0.002		0.002	0.002	
HLW99-53	0.0248	0.0124	0.0186	0.002	0.002	0.002	0.0025	0.002	0.002	0.002		0.002	0.002	
HLW99-54	0.0275	0.0138	0.0206	0.002	0.002	0.002	0	0.002	0.002	0.002		0.002	0.002	
HLW99-55	0.0188	0.0094	0.0141	0.002	0.002	0.002	0	0.002	0.002	0.002		0.002	0.002	
HLW99-56R	0.04	0.02	0.03	0.002	0.002	0.002	0	0.002	0.002	0.002		0.002	0.002	
HLW99-57	0	0	0	0.002	0.002	0.002	0	0.002	0.002	0.002		0.002	0.002	
HLW99-58	0.0088	0.0044	0.0066	0.002	0.002	0.002	0	0.002	0.002	0.002		0.002	0.002	
HLW99-59	0.04	0.02	0.03	0.002	0.002	0.002	0	0.002	0.002	0.002		0.002	0.002	
HLW99-60	0.027	0.0135	0.0203	0.002	0.002	0.002	0.005	0.002	0.002	0.002		0.002	0.002	
HLW99-61	0.04	0.02	0.03	0.002	0.002	0.002	0	0.002	0.002	0.002		0.002	0.002	
HLW99-62	0.0246	0.0123	0.0184	0.002	0.002	0.002	0	0.002	0.002	0.002		0.002	0.002	
HLW99-63	0.0125	0.0062	0.0094	0.002	0.002	0.002	0.0021	0.002	0.002	0.002		0.002	0.002	
HLW99-64	0.04	0.02	0.03	0.002	0.002	0.002	0.005	0.002	0.002	0.002		0.002	0.002	
HLW99-65	0	0	0	0.002	0.002	0.002	0.005	0.002	0.002	0.002		0.002	0.002	
HLW99-66	0	0	0	0.0021	0.0021	0.0063	0.0021	0.0021	0.0021	0.0021		0.0021	0.0373	
HLW99-67	0	0	0	0.0021	0.0021	0.0063	0.0021	0.0021	0.0021	0.0021		0.0021	0.0912	
HLW99-68	0.0263	0.0131	0.0197	0.0021	0.0021	0.0063	0.0021	0.0021	0.0021	0.0021		0.0021	0.0373	
HLW99-69	0.0263	0.0131	0.0197	0.0021	0.0021	0.0063	0.0021	0.0021	0.0021	0.0021		0.0021	0.0878	
HLW99-70	0	0	0	0.0021	0.0021	0.0063	0.0021	0.0021	0.0021	0.0021		0.0021	0.0912	
HLW99-71	0	0	0	0.0021	0.0021	0.0063	0.0021	0.0021	0.0021	0.0021		0.0021	0.0373	
HLW99-72	0.0263	0.0131	0.0197	0.0021	0.0021	0.0063	0.0021	0.0021	0.0021	0.0021		0.0021	0.0373	
HLW99-73	0	0	0	0.0021	0.0021	0.0063	0.0021	0.0021	0.0021	0.0021		0.0021	0.0373	
HLW99-74	0.0131	0.0066	0.0098	0.0021	0.0021	0.0063	0.0021	0.0021	0.0021	0.0021		0.0021	0.0651	
HLW99-75	0.0176	0.0088	0.0132	0.0021	0.0021	0.0063	0.0021	0.0021	0.0021	0.0021		0.0021	0.0373	
HLW99-76	0.0263	0.0131	0.0197	0.0021	0.0021	0.0063	0.0021	0.0021	0.0021	0.0021		0.0021	0.0672	
HLW99-77	0	0	0	0.0021	0.0021	0.0063	0.0021	0.0021	0.0021	0.0021		0.0021	0.0651	
HLW99-78	0.0088	0.0044	0.0066	0.0021	0.0021	0.0063	0.0021	0.0021	0.0021	0.0021		0.0021	0.0912	
HLW99-79	0	0	0	0.0021	0.0021	0.0063	0.0021	0.0021	0.0021	0.0021		0.0021	0.0912	
HLW99-80	0.025	0.0125	0.0188	0.002	0.002	0.002	0.002	0.002	0.002	0.002		0.002	0.0629	

RPP-WTP HLW Formulation (Kot and Pegg 2001)

Appendix A. Glass Composition and TCLP Release Data

RPP-WTP HLW Formulation (Kot and Pegg 2001)

Glass ID	MoO	MoO3	Nd2O3	PbO	PdO	ReO2	Rh2O3	RuO2	Sb2O3	Sb2O5	SeO2	SnO	SnO2
HLW99-42				0	0.0004		0.0008	0.0013		0.002	0.002		
HLW99-43				0	0.0004		0.0008	0.0013		0.002	0.002		
HLW99-44				0	0.0004		0.0008	0.0013		0.002	0.002		
HLW99-45				0.0002	0.0004		0.0008	0.0013		0.002	0.002		
HLW99-46				0.01	0.0004		0.0008	0.0013		0.002	0.002		
HLW99-47				0	0.0004		0.0008	0.0013		0.002	0.002		
HLW99-48				0.01	0.0004		0.0008	0.0013		0.002	0.002		
HLW99-49				0.0014	0.0004		0.0008	0.0013		0.002	0.002		
HLW99-50				0	0.0004		0.0008	0.0013		0.002	0.002		
HLW99-51R				0	0.0004		0.0008	0.0013		0.002	0.002		
HLW99-52				0.01	0.0004		0.0008	0.0013		0.002	0.002		
HLW99-53				0.0062	0.0004		0.0008	0.0013		0.002	0.002		
HLW99-54				0.0069	0.0004		0.0008	0.0013		0.002	0.002		
HLW99-55				0.0047	0.0004		0.0008	0.0013		0.002	0.002		
HLW99-56R				0.01	0.0004		0.0008	0.0013		0.002	0.002		
HLW99-57				0	0.0004		0.0008	0.0013		0.002	0.002		
HLW99-58				0.0022	0.0004		0.0008	0.0013		0.002	0.002		
HLW99-59				0.01	0.0004		0.0008	0.0013		0.002	0.002		
HLW99-60				0.0068	0.0004		0.0008	0.0013		0.002	0.002		
HLW99-61				0.01	0.0004		0.0008	0.0013		0.002	0.002		
HLW99-62				0.0061	0.0004		0.0008	0.0013		0.002	0.002		
HLW99-63				0.0031	0.0004		0.0008	0.0013		0.002	0.002		
HLW99-64				0.01	0.0004		0.0008	0.0013		0.002	0.002		
HLW99-65				0	0.0004		0.0008	0.0013		0.002	0.002		
HLW99-66				0	0.0004		0.0008	0.0014		0.0021	0.0021		
HLW99-67				0	0.0004		0.0008	0.0014		0.0021	0.0021		
HLW99-68				0.0066	0.0004		0.0008	0.0014		0.0021	0.0021		
HLW99-69				0.0066	0.0004		0.0008	0.0014		0.0021	0.0021		
HLW99-70				0	0.0004		0.0008	0.0014		0.0021	0.0021		
HLW99-71				0	0.0004		0.0008	0.0014		0.0021	0.0021		
HLW99-72				0.0066	0.0004		0.0008	0.0014		0.0021	0.0021		
HLW99-73				0	0.0004		0.0008	0.0014		0.0021	0.0021		
HLW99-74				0.0033	0.0004		0.0008	0.0014		0.0021	0.0021		
HLW99-75				0.0044	0.0004		0.0008	0.0014		0.0021	0.0021		
HLW99-76				0.0066	0.0004		0.0008	0.0014		0.0021	0.0021		
HLW99-77				0	0.0004		0.0008	0.0014		0.0021	0.0021		
HLW99-78				0.0022	0.0004		0.0008	0.0014		0.0021	0.0021		
HLW99-79				0	0.0004		0.0008	0.0014		0.0021	0.0021		
HLW99-80				0.0063	0.0004		0.0008	0.0013		0.002	0.002		

RPP-WTP HLW Formulation (Kot and Pegg 2001)

Appendix A. Glass Composition and TCLP Release Data

RPP-WTP HLW Formulation (Kot and Pegg 2001)

Glass ID	SO3	SrO	TeO2	ThO2	TiO2	Tl2O3	U3O8	UO2	UO3	V2O5	WO3	Y2O3	ZnO	Sum
HLW99-42	0	0.002	0.002	0	0	0.002		0			0.002		0.02	1.0000
HLW99-43	0	0.002	0.002	0	0	0.002		0			0.002		0.02	1.0000
HLW99-44	0.0031	0.002	0.002	0.0012	0	0.002		0.0492			0.002		0.02	1.0000
HLW99-45	0.005	0.002	0.002	0.002	0.0002	0.002		0.08			0.002		0.02	1.0002
HLW99-46	0	0.002	0.002	0	0.01	0.002		0			0.002		0.02	0.9999
HLW99-47	0	0.002	0.002	0	0	0.002		0			0.002		0.02	1.0000
HLW99-48	0	0.002	0.002	0	0.01	0.002		0			0.002		0.02	1.0000
HLW99-49	0.005	0.002	0.002	0.002	0.0014	0.002		0.08			0.002		0.02	1.0000
HLW99-50	0.0042	0.002	0.002	0.0017	0	0.002		0.0667			0.002		0.02	1.0001
HLW99-51R	0.005	0.002	0.002	0.002	0	0.002		0.08			0.002		0.02	1.0000
HLW99-52	0	0.002	0.002	0	0.01	0.002		0			0.002		0.02	1.0000
HLW99-53	0.0025	0.002	0.002	0.001	0.0062	0.002		0.04			0.002		0.02	1.0002
HLW99-54	0	0.002	0.002	0	0.0069	0.002		0			0.002		0.02	1.0001
HLW99-55	0	0.002	0.002	0	0.0047	0.002		0			0.002		0.02	1.0002
HLW99-56R	0	0.002	0.002	0	0.01	0.002		0			0.002		0.02	1.0000
HLW99-57	0	0.002	0.002	0	0	0.002		0			0.002		0.02	1.0000
HLW99-58	0	0.002	0.002	0	0.0022	0.002		0			0.002		0.02	1.0002
HLW99-59	0	0.002	0.002	0	0.01	0.002		0			0.002		0.02	1.0000
HLW99-60	0.005	0.002	0.002	0.002	0.0068	0.002		0.08			0.002		0.02	1.0001
HLW99-61	0	0.002	0.002	0	0.01	0.002		0			0.002		0.02	1.0000
HLW99-62	0	0.002	0.002	0	0.0061	0.002		0			0.002		0.02	0.9999
HLW99-63	0.0021	0.002	0.002	0.0008	0.0031	0.002		0.0332			0.002		0.02	1.0000
HLW99-64	0.005	0.002	0.002	0.002	0.01	0.002		0.08			0.002		0.02	1.0000
HLW99-65	0.005	0.002	0.002	0.002	0	0.002		0.08			0.002		0.02	1.0000
HLW99-66	0.0026	0.0572	0.0021	0	0	0.0021		0			0.0021		0.021	0.9997
HLW99-67	0.0026	0.1398	0.0021	0	0	0.0021		0			0.0021		0.021	0.9999
HLW99-68	0.0026	0.0572	0.0021	0	0.0066	0.0021		0			0.0021		0.021	1.0000
HLW99-69	0.0026	0.1348	0.0021	0	0.0066	0.0021		0			0.0021		0.021	1.0000
HLW99-70	0.0026	0.1399	0.0021	0	0	0.0021		0			0.0021		0.021	0.9997
HLW99-71	0.0026	0.0572	0.0021	0	0	0.0021		0			0.0021		0.021	0.9998
HLW99-72	0.0026	0.0572	0.0021	0	0.0066	0.0021		0			0.0021		0.021	0.9998
HLW99-73	0.0026	0.0573	0.0021	0	0	0.0021		0			0.0021		0.021	0.9997
HLW99-74	0.0026	0.0998	0.0021	0	0.0033	0.0021		0			0.0021		0.021	1.0000
HLW99-75	0.0026	0.0572	0.0021	0	0.0044	0.0021		0			0.0021		0.021	0.9997
HLW99-76	0.0026	0.103	0.0021	0	0.0066	0.0021		0			0.0021		0.021	0.9998
HLW99-77	0.0026	0.0999	0.0021	0	0	0.0021		0			0.0021		0.021	0.9998
HLW99-78	0.0026	0.1399	0.0021	0	0.0022	0.0021		0			0.0021		0.021	0.9999
HLW99-79	0.0026	0.1399	0.0021	0	0	0.0021		0			0.0021		0.021	0.9998
HLW99-80	0.0025	0.0966	0.002	0	0.0063	0.002		0			0.002		0.02	1.0002

RPP-WTP HLW Formulation (Kot and Pegg 2001)

Appendix A. Glass Composition and TCLP Release Data

RPP-WTP HLW Formulation (Kot and Pegg 2001)

Glass ID	TCLP B (mg/L)	TCLP Ag (mg/L)	TCLP As (mg/L)	TCLP Ba (mg/L)	TCLP Cd (mg/L)	TCLP Cr (mg/L)	TCLP Ni (mg/L)	TCLP Pb (mg/L)	TCLP Se (mg/L)	TCLP Zn (mg/L)
HLW99-42	1.566	0.05	0.086	0.082	0.045	<0.0055	0.025	<0.0243	0.0532	0.504
HLW99-43	17.098	0.109	0.071	0.025	<0.0027	<0.0055	<0.0079	0.033	0.0532	4.6
HLW99-44	4.656	0.492	0.049	0.031	0.007	0.157	0.038	0.101	0.068	3.237
HLW99-45	6.689	0.209	NA	0.116	0.067	0.076	0.079	0.09	NA	2.138
HLW99-46	88.62	0.372	0.425	58.931	56.468	0.038	53.415	0.397	0.563	34.913
HLW99-47	0.34	0.058	0.049	0.005	<0.0027	<0.0055	<0.0079	<0.0243	0.079	0.273
HLW99-48	2.481	0.216	0.049	4.356	3.162	<0.0055	1.456	0.297	0.072	0.016
HLW99-49	2.35	0.197	0.375	1.213	0.408	5.363	0.334	0.06	0.062	1.479
HLW99-50	0.588	0.045	NA	0.031	0.013	0.016	0.014	1.497	NA	0.843
HLW99-51R	143.318	0.174	2.363	0.19	<0.0027	4.729	0.234	0.777	1.851	8.813
HLW99-52	169.871	0.206	0.499	76.9	68.73	0.022	62.646	4.361	0.789	43.693
HLW99-53	2.09	0.205	0.049	1.943	1.146	0.017	0.778	0.284	0.125	1.214
HLW99-54	0.991	0.047	0.098	0.742	0.484	<0.0055	0.39	0.148	0.084	0.436
HLW99-55	5.286	0.227	0.094	5.618	4.049	0.019	2.2	0.482	0.056	5.131
HLW99-56R	0.946	0.109	0.051	1.488	0.987	<0.0055	0.466	0.282	0.0532	0.624
HLW99-57	0.606	0.046	0.049	0.031	0.004	<0.0055	<0.0079	<0.0243	0.071	0.55
HLW99-58	156.24	0.054	0.189	7.817	13.979	0.05	12.915	0.681	0.958	37.847
HLW99-59	1.469	0.128	0.049	2.346	1.678	<0.0055	1.296	0.506	0.088	1.022
HLW99-60	4.134	0.056	0.074	2.242	1.553	0.019	0.862	0.369	0.072	1.489
HLW99-61	182.763	0.072	0.291	77.997	67.006	0.019	63.71	3.922	0.951	44.108
HLW99-62	0.621	0.054	0.056	0.699	0.451	<0.0055	0.352	0.148	0.0532	0.459
HLW99-63	2.587	0.129	0.049	1.238	0.524	0.017	0.381	0.143	0.17	1.109
HLW99-64	13.46	0.448	0.201	10.856	11.492	0.123	9.62	1.352	0.338	6.956
HLW99-65	31.332	0.368	0.054	0.833	0.151	0.318	0.255	0.166	0.27	8.745
HLW99-66	0.55	0.064	0.065	0.48	<0.0027	<0.0055	<0.0079	<0.0243	0.105	0.614
HLW99-67	1.196	0.15	0.049	0.575	<0.0027	0.01	0.01	0.078	0.111	1.145
HLW99-68	1.039	0.137	0.049	1.571	0.956	<0.0055	0.147	0.311	0.0532	1.01
HLW99-69	2.502	0.309	0.049	3.725	2.592	0.037	1.738	0.828	0.094	2.521
HLW99-70	5.927	0.519	0.099	1.097	0.006	0.102	0.026	0.416	0.124	5.859
HLW99-71	0.577	0.069	0.061	0.46	<0.0027	<0.0055	0.008	<0.0243	0.065	0.591
HLW99-72	0.85	0.105	0.11	1.511	0.848	0.015	0.584	0.268	0.0532	0.871
HLW99-73	1.555	0.187	0.063	0.883	<0.0027	0.041	0.016	0.042	0.0532	1.622
HLW99-74	1.207	0.148	0.063	1.64	0.562	0.028	0.134	0.203	0.062	1.105
HLW99-75	1.646	0.208	0.212	2.195	1.102	0.032	0.374	0.29	0.057	1.606
HLW99-76	9.672	1.097	0.149	11.832	10.328	0.127	7.274	1.554	0.248	11.355
HLW99-77	1.578	0.213	0.164	1.022	0.029	0.018	0.022	0.039	0.105	1.473
HLW99-78	2.59	0.326	<0.049	2.29	0.918	0.024	0.579	0.246	<0.0532	2.427
HLW99-79	1.76	0.203	0.214	1.2	0.006	0.034	<0.0079	0.124	0.144	1.774
HLW99-80	4.331	0.249	0.128	3.673	2.343	0.027	1.287	0.641	0.172	2.127

RPP-WTP HLW Formulation (Kot and Pegg 2001)

Appendix A. Glass Composition and TCLP Release Data

Glass ID	Al2O3	B2O3	CaO	Fe2O3	K2O	Li2O	MgO	Na2O	NiO	P2O5	SiO2	ZrO2	Ag2O	As2O3
HLW99-81	0.0736	0.0525	0.021	0.021	0.0105	0.0315	0	0.1276	0	0.0013	0.404	0.0315	0.0026	0.0021
HLW99-82	0.07	0.1	0.02	0.056	0.01	0.03	0.0125	0.1072	0.0188	0.0025	0.3288	0.03	0.0025	0.002
HLW99-83	0.07	0.1	0.02	0.0804	0.01	0.03	0	0.0672	0	0.0025	0.369	0.03	0.0025	0.002
HLW99-84	0.07	0.1	0.02	0.02	0.01	0.03	0.0073	0.0674	0.011	0.0025	0.3698	0.03	0.0025	0.002
HLW99-85	0.07	0.1	0.02	0.0725	0.01	0.03	0.0063	0.0739	0.0094	0.0025	0.3956	0.03	0.0025	0.002
HLW99-86	0.07	0.1	0.02	0.02	0.01	0.03	0	0.0944	0	0.0025	0.4776	0.03	0.0025	0.002
HLW99-87	0.07	0.1	0.02	0.0535	0.01	0.03	0.0042	0.075	0.0063	0.0025	0.3	0.03	0.0025	0.002
HLW99-88	0.07	0.1	0.02	0.125	0.01	0.03	0.0125	0.067	0.0188	0.0025	0.3	0.03	0.0025	0.002
HLW99-89	0.07	0.1	0.02	0.125	0.01	0.03	0	0.0734	0	0.0025	0.3936	0.03	0.0025	0.002
HLW99-90R	0.07	0.1	0.02	0.125	0.01	0.03	0	0.1	0	0.0025	0.3	0.03	0.0025	0.002
HLW99-91	0.07	0.1	0.02	0.112	0.01	0.03	0	0.05	0	0.0025	0.3	0.03	0.0025	0.002
HLW99-92	0.07	0.1	0.02	0.02	0.01	0.03	0.0125	0.05	0.0188	0.0025	0.3	0.03	0.0025	0.002
HLW99-93R2	0.07	0.1	0.02	0.02	0.01	0.03	0	0.1084	0	0.0025	0.3336	0.03	0.0025	0.002
HLW99-94	0.07	0.1	0.02	0.02	0.01	0.03	0	0.1344	0	0.0025	0.4376	0.03	0.0025	0.002
HLW99-95	0.07	0.1	0.02	0.02	0.01	0.03	0	0.1344	0	0.0025	0.4376	0.03	0.0025	0.002
HLW99-96	0.07	0.1	0.02	0.125	0.01	0.03	0.0063	0.05	0.0094	0.0025	0.3	0.03	0.0025	0.002
HLW99-97	0.07	0.1	0.02	0.125	0.01	0.03	0.0084	0.1	0.0126	0.0025	0.3	0.03	0.0025	0.002
HLW99-98R	0.07	0.1	0.02	0.02	0.01	0.03	0.0125	0.1	0.0188	0.0025	0.3	0.03	0.0025	0.002
HLW99-99	0.07	0.1	0.02	0.02	0.01	0.03	0	0.0684	0	0.0025	0.3736	0.03	0.0025	0.002
HLW99-100	0.07	0.1	0.02	0.02	0.01	0.03	0	0.1214	0	0.0025	0.3856	0.03	0.0025	0.002

LANL Glasses (Vienna et al. 1998)

LANL-A	0.050007	0.060009	0.066975	0.019067	0.016633	0.050007	0.076408	0.122696	0.00178		0.532038			
LANL-B	0.006818	0.060009	0.066975	0.019067	0.016633	0.050007	0.076408	0.119189	0.00178		0.578734			
LANL-C	0.006818	0.060009	0.066975	0.019067	0.050007	0.050007	0.076408	0.097645	0.00178		0.566904			
LANL-D	0.050007	0.150021	0.066975	0.019067	0.016633	0	0.076408	0.165327	0.00178		0.449401			
LANL-E	0.050007	0.150021	0.066975	0.019067	0.049998	0	0.076408	0.143789	0.00178		0.437574			
LANL-F	0.050007	0.150021	0.066975	0.019067	0.016633	0.050007	0.076408	0.053844	0.00178		0.510877			
LANL-G	0.006818	0.150021	0.066975	0.019067	0.016633	0	0.076408	0.16182	0.00178		0.496097			
LANL-H	0.006818	0.150021	0.066975	0.019067	0.016633	0.050007	0.076408	0.050337	0.00178		0.557573			
LANL-I	0.050024	0.150021	0.120017	0.019067	0.016633	0	0.076408	0.121258	0.00178		0.44041			
LANL-J	0.050024	0.150021	0.066975	0.019067	0.016633	0	0.120017	0.139325	0.00178		0.431776			
LANL-K	0.050011	0.150032	0.100469	0.028602	0.024951	0	0.11462	0.102931	0.002671		0.419141			
LANL-L	0.050024	0.150021	0.066975	0.050007	0.016633	0	0.076408	0.150441	0.00178		0.433329			
LANL-M	0.050024	0.150021	0.066975	0.019067	0.016633	0	0.076408	0.134838	0.00178		0.430025			
LANL-N	0.050024	0.050007	0.066975	0.019067	0.049998	0.050007	0.076408	0.108809	0.00178		0.522544			
LANL-O	0.050024	0.150021	0.066975	0.019067	0.049998	0.050007	0.076408	0.032307	0.00178		0.499032			
LANL-P	0.006818	0.150021	0.120022	0.019067	0.016633	0.050007	0.076408	0.007824	0.00178		0.547038			
LANL-Q	0.006818	0.050007	0.120022	0.019067	0.016633	0.050007	0.076408	0.082765	0.00178		0.572112			

Appendix A. Glass Composition and TCLP Release Data

Glass ID	BaO	Bi2O3	CdO	CeO2	Cl	CoO	Cr2O3	Cs2O	CuO	F	Gd2O3	La2O3	MnO2	MnO
HLW99-81	0	0	0	0.0021	0.0021	0.0063	0.0021	0.0021	0.0021	0.0021		0.0021	0.0643	
HLW99-82	0.025	0.0125	0.0188	0.002	0.002	0.002	0.002	0.002	0.002	0.002		0.002	0.0355	
HLW99-83	0	0	0	0.002	0.002	0.002	0.002	0.002	0.002	0.002		0.002	0.0653	
HLW99-84	0.0146	0.0073	0.011	0.002	0.002	0.002	0.002	0.002	0.002	0.002		0.002	0.0657	
HLW99-85	0.0125	0.0063	0.0094	0.002	0.002	0.002	0.002	0.002	0.002	0.002		0.002	0.0355	
HLW99-86	0	0	0	0.002	0.002	0.002	0.002	0.002	0.002	0.002		0.002	0.0355	
HLW99-87	0.0084	0.0042	0.0063	0.002	0.002	0.002	0.002	0.002	0.002	0.002		0.002	0.0868	
HLW99-88	0.025	0.0125	0.0188	0.002	0.002	0.002	0.002	0.002	0.002	0.002		0.002	0.0355	
HLW99-89	0	0	0	0.002	0.002	0.002	0.002	0.002	0.002	0.002		0.002	0.0355	
HLW99-90R	0	0	0	0.002	0.002	0.002	0.002	0.002	0.002	0.002		0.002	0.062	
HLW99-91	0	0	0	0.002	0.002	0.002	0.002	0.002	0.002	0.002		0.002	0.0868	
HLW99-92	0.025	0.0125	0.0188	0.002	0.002	0.002	0.002	0.002	0.002	0.002		0.002	0.0837	
HLW99-93R2	0	0	0	0.002	0.002	0.002	0.002	0.002	0.002	0.002		0.002	0.0868	
HLW99-94	0	0	0	0.002	0.002	0.002	0.002	0.002	0.002	0.002		0.002	0.0355	
HLW99-95	0	0	0	0.002	0.002	0.002	0.002	0.002	0.002	0.002		0.002	0.0355	
HLW99-96	0.0125	0.0063	0.0094	0.002	0.002	0.002	0.002	0.002	0.002	0.002		0.002	0.062	
HLW99-97	0.0168	0.0084	0.0126	0.002	0.002	0.002	0.002	0.002	0.002	0.002		0.002	0.0355	
HLW99-98R	0.025	0.0125	0.0188	0.002	0.002	0.002	0.002	0.002	0.002	0.002		0.002	0.0639	
HLW99-99	0	0	0	0.002	0.002	0.002	0.002	0.002	0.002	0.002		0.002	0.0868	
HLW99-100	0	0	0	0.002	0.002	0.002	0.002	0.002	0.002	0.002		0.002	0.0612	

LANL Glasses (Vienna et al. 1998)

LANL-A	4E-05		2E-05	0.0019			0.00226							
LANL-B	4E-05		2E-05	0.0019			0.00226							
LANL-C	4E-05		2E-05	0.0019			0.00226							
LANL-D	4E-05		2E-05	0.0019			0.00226							
LANL-E	4E-05		2E-05	0.0019			0.00226							
LANL-F	4E-05		2E-05	0.0019			0.00226							
LANL-G	4E-05		2E-05	0.0019			0.00226							
LANL-H	4E-05		2E-05	0.0019			0.00226							
LANL-I	4E-05		2E-05	0.0019			0.00226							
LANL-J	4E-05		2E-05	0.0019			0.00226							
LANL-K	6E-05		3E-05	0.00285			0.003391							
LANL-L	4E-05		2E-05	0.0019			0.00226							
LANL-M	4E-05		2E-05	0.0019			0.00226							
LANL-N	4E-05		2E-05	0.0019			0.00226							
LANL-O	4E-05		2E-05	0.0019			0.00226							
LANL-P	4E-05		2E-05	0.0019			0.00226							
LANL-Q	4E-05		2E-05	0.0019			0.00226							

Appendix A. Glass Composition and TCLP Release Data

Glass ID	MoO	MoO3	Nd2O3	PbO	PdO	ReO2	Rh2O3	RuO2	Sb2O3	Sb2O5	SeO2	SnO	SnO2
HLW99-81				0	0.0004		0.0008	0.0014		0.0021	0.0021		
HLW99-82				0.0063	0.0004		0.0008	0.0013		0.002	0.002		
HLW99-83				0	0.0004		0.0008	0.0013		0.002	0.002		
HLW99-84				0.0037	0.0004		0.0008	0.0013		0.002	0.002		
HLW99-85				0.0031	0.0004		0.0008	0.0013		0.002	0.002		
HLW99-86				0	0.0004		0.0008	0.0013		0.002	0.002		
HLW99-87				0.0021	0.0004		0.0008	0.0013		0.002	0.002		
HLW99-88				0.0063	0.0004		0.0008	0.0013		0.002	0.002		
HLW99-89				0	0.0004		0.0008	0.0013		0.002	0.002		
HLW99-90R				0	0.0004		0.0008	0.0013		0.002	0.002		
HLW99-91				0	0.0004		0.0008	0.0013		0.002	0.002		
HLW99-92				0.0063	0.0004		0.0008	0.0013		0.002	0.002		
HLW99-93R2				0	0.0004		0.0008	0.0013		0.002	0.002		
HLW99-94				0	0.0004		0.0008	0.0013		0.002	0.002		
HLW99-95				0	0.0004		0.0008	0.0013		0.002	0.002		
HLW99-96				0.0031	0.0004		0.0008	0.0013		0.002	0.002		
HLW99-97				0.0042	0.0004		0.0008	0.0013		0.002	0.002		
HLW99-98R				0.0063	0.0004		0.0008	0.0013		0.002	0.002		
HLW99-99				0	0.0004		0.0008	0.0013		0.002	0.002		
HLW99-100				0	0.0004		0.0008	0.0013		0.002	0.002		

LANL Glasses (Vienna et al. 1998)

LANL-A			0	0.000161									
LANL-B			0	0.000161									
LANL-C			0	0.000161									
LANL-D			0	0.000161									
LANL-E			0	0.000161									
LANL-F			0	0.000161									
LANL-G			0	0.000161									
LANL-H			0	0.000161									
LANL-I			0	0.000161									
LANL-J			0	0.000161									
LANL-K			0	0.000241									
LANL-L			0	0.000161									
LANL-M			0	0.050008									
LANL-N			0	0.000161									
LANL-O			0	0.000161									
LANL-P			0	0.000161									
LANL-Q			0	0.000161									

Appendix A. Glass Composition and TCLP Release Data

Glass ID	SO3	SrO	TeO2	ThO2	TiO2	Tl2O3	U3O8	UO2	UO3	V2O5	WO3	Y2O3	ZnO	Sum
HLW99-81	0.0026	0.0986	0.0021	0	0	0.0021		0			0.0021		0.021	0.9998
HLW99-82	0.0025	0.0545	0.002	0	0.0063	0.002		0			0.002		0.02	1.0002
HLW99-83	0.0025	0.1001	0.002	0	0	0.002		0			0.002		0.02	1.0000
HLW99-84	0.0025	0.1007	0.002	0	0.0037	0.002		0			0.002		0.02	1.0002
HLW99-85	0.0025	0.0545	0.002	0	0.0031	0.002		0			0.002		0.02	1.0001
HLW99-86	0.0025	0.0545	0.002	0	0	0.002		0			0.002		0.02	1.0000
HLW99-87	0.0025	0.1332	0.002	0	0.0021	0.002		0			0.002		0.02	1.0001
HLW99-88	0.0025	0.0545	0.002	0	0.0063	0.002		0			0.002		0.02	1.0002
HLW99-89	0.0025	0.0545	0.002	0	0	0.002		0			0.002		0.02	1.0000
HLW99-90R	0.0025	0.095	0.002	0	0	0.002		0			0.002		0.02	1.0000
HLW99-91	0.0025	0.1332	0.002	0	0	0.002		0			0.002		0.02	1.0000
HLW99-92	0.0025	0.1283	0.002	0	0.0063	0.002		0			0.002		0.02	1.0002
HLW99-93R2	0.0025	0.1332	0.002	0	0	0.002		0			0.002		0.02	1.0000
HLW99-94	0.0025	0.0545	0.002	0	0	0.002		0			0.002		0.02	1.0000
HLW99-95	0.0025	0.0545	0.002	0	0	0.002		0			0.002		0.02	1.0000
HLW99-96	0.0025	0.095	0.002	0	0.0031	0.002		0			0.002		0.02	1.0001
HLW99-97	0.0025	0.0545	0.002	0	0.0042	0.002		0			0.002		0.02	1.0002
HLW99-98R	0.0025	0.0981	0.002	0	0.0063	0.002		0			0.002		0.02	1.0002
HLW99-99	0.0025	0.1332	0.002	0	0	0.002		0			0.002		0.02	1.0000
HLW99-100	0.0025	0.0938	0.002	0	0	0.002		0			0.002		0.02	1.0000

LANL Glasses (Vienna et al. 1998)

LANL-A														1.0000
LANL-B														1.0000
LANL-C														1.0000
LANL-D														1.0000
LANL-E														1.0000
LANL-F														1.0000
LANL-G														1.0000
LANL-H														1.0000
LANL-I														1.0000
LANL-J														1.0000
LANL-K														1.0000
LANL-L														1.0000
LANL-M														1.0000
LANL-N														1.0000
LANL-O														1.0000
LANL-P														1.0000
LANL-Q														1.0000

Appendix A. Glass Composition and TCLP Release Data

Glass ID	TCLP B (mg/L)	TCLP Ag (mg/L)	TCLP As (mg/L)	TCLP Ba (mg/L)	TCLP Cd (mg/L)	TCLP Cr (mg/L)	TCLP Ni (mg/L)	TCLP Pb (mg/L)	TCLP Se (mg/L)	TCLP Zn (mg/L)
HLW99-81	2.171	0.254	0.049	1.169	0.101	0.019	0.039	0.124	0.072	2.155
HLW99-82	5.748	0.334	0.049	4.458	2.875	0.02	2.089	0.69	0.0532	2.823
HLW99-83	1.971	0.111	0.105	1.019	0.016	<0.0055	<0.0079	0.044	0.0532	1.097
HLW99-84	4.03	0.231	0.172	2.512	1.2	<0.0055	0.937	0.388	0.055	2.171
HLW99-85	1.374	0.081	0.238	1.373	0.337	0.036	0.27	0.115	0.0532	0.0779
HLW99-86	1.232	0.07	0.049	0.816	0.011	0.035	0.039	<0.0243	0.121	0.73
HLW99-87	9.597	0.559	0.122	2.737	1.64	0.073	1.171	0.583	0.0532	4.627
HLW99-88	2.92	0.233	0.055	2.659	1.508	<0.0055	0.399	0.416	0.0532	1.376
HLW99-89	1.027	0.105	0.049	0.807	0.017	0.015	<0.0079	<0.0243	0.0532	0.649
HLW99-90R	3.254	0.201	0.049	0.767	<0.0027	0.02	0.015	0.085	0.0532	1.714
HLW99-91	2.96	0.18	<0.049	0.819	0.011	<0.0055	<0.0079	0.066	<0.0532	1.627
HLW99-92	8.366	0.527	0.063	6.268	4.021	0.04	3.913	1.016	<0.0532	4.434
HLW99-93R2	15.072	0.739	0.224	1.415	<0.0027	0.081	0.019	0.233	0.081	8.326
HLW99-94	4.177	0.253	0.083	1.206	0.072	0.019	0.061	0.055	<0.0532	2.307
HLW99-95	3.212	0.195	0.083	0.974	<0.0027	0.018	<0.0079	<0.0243	0.064	1.812
HLW99-96	2.499	0.164	<0.0490	1.605	0.616	<0.0055	0.212	0.147	0.075	1.151
HLW99-97	3.446	0.225	<0.0490	2.453	1.151	<0.0055	0.523	0.275	<0.0532	1.781
HLW99-98R	16.871	0.605	0.072	10.716	8.643	0.081	7.903	1.292	0.081	9.125
HLW99-99	4.592	0.267	<0.0490	1.262	0.018	0.024	0.009	0.077	0.125	2.486
HLW99-100	15.874	0.795	0.186	1.627	0.02	0.072	0.022	0.227	0.12	8.829

LANL Glasses (Vienna et al. 1998)

LANL-A	13.1253			0.03444	0.0387	0.12057	1.02933			
LANL-B	1.45275			0.01434			0.12591			
LANL-C	3.29358			0.01746			0.19824			
LANL-D	115.7718			0.08067		0.09246	3.09501			
LANL-E	108.32994			0.07389		0.13149	2.97954			
LANL-F	4.89279			0.01152			0.09693			
LANL-G	117.61176			0.10524			3.26493			
LANL-H	5.23701			0.01797			0.11772			
LANL-I	98.60685			0.09222			2.60763			
LANL-J	93.5427			0.08604		0.09345	2.64261			
LANL-K	66.37953			0.06129		0.06411	2.81679			
LANL-L	53.05995			0.0501			1.51941			
LANL-M	71.20971			0.07347			2.15244	26.95101		
LANL-N	19.5414			0.0687	0.02127	0.26736	1.79145			
LANL-O	17.78376			0.03249		0.06102	0.59286			
LANL-P	19.70343			0.03777		0.06111	0.65973			
LANL-Q	1.06527			0.01227			0.11706			

Appendix A. Glass Composition and TCLP Release Data

LANL Glasses (Vienna et al. 1998)

Glass ID	Al2O3	B2O3	CaO	Fe2O3	K2O	Li2O	MgO	Na2O	NiO	P2O5	SiO2	ZrO2	Ag2O	As2O3
LANL-R	0.006818	0.050007	0.066975	0.019067	0.016633	0.050007	0.120017	0.100836	0.00178		0.563478			
LANL-S	0.010228	0.050011	0.100469	0.028602	0.024951	0.050011	0.11462	0.064717	0.002671		0.547148			
LANL-T	0.050024	0.050007	0.066975	0.019067	0.050007	0.050007	0.120017	0.0828	0.00178		0.504934			
LANL-U	0.006821	0.116772	0.066977	0.019072	0.016632	0.058656	0.076418	0.056506	0.00178		0.575988			
LANL-U	0.006821	0.116772	0.066977	0.019072	0.016632	0.058656	0.076418	0.056506	0.00178		0.575988			
LANL-V	0	0.200002	0	0.120001	0.150002	0.0309	0	0.069101	0.00024		0.429004			
LANL-X	0.12	0.2	0.12	0	0	0.0823	0	0	0.00971		0.4377			
LANL-Y	0	0.2	0.12	0.12	0	0.052	0	0	0.00971		0.468			
LANL-Z	0.12	0.0218	0.12	0	0.15	0.1	0	0	0.00971		0.4482			
LANL-AA	0.12	0.02	0	0.12	0	0.0876	0.12	0.0924	0.00971		0.4			
LANL-AB	0.12	0.0536	0	0	0.15	0.1	0.12	0	0.00971		0.4164			
LANL-AC	0	0.02	0	0.120001	0	0.099701	0	0.150302	0.00024		0.609006			
LANL-AD	0.0416	0.02	0	0	0	0.0784	0	0.16	0.00971		0.66			
LANL-AE	0.120001	0.02	0.120001	0.120001	0.150002	0.0476	0	0	0.00024		0.421404			
LANL-AF	0.120001	0.200002	0	0.120001	0	0.0406	0.118401	0	0.00024		0.400004			
LANL-AG	0.120001	0.200002	0	0	0	0.099901	0	0	0.00024		0.579106			
LANL-AH	0	0.2	0	0	0.15	0	0	0.0968	0.00971		0.5132			
LANL-AI	0	0.02	0.12	0.12	0.15	0	0.12	0.0017	0.00971		0.4283			
LANL-AJ	0.12	0.02	0.12	0.12	0	0.0106	0	0.16	0.00971		0.4094			
LANL-AK	0	0.02	0	0.12	0	0.0889	0.12	0	0.00971		0.6111			

Plutonium Residue Glasses (Bulkley and Vienna 1997)

SRC-BL	0.05	0.06	0.049	0.016	0.03	0.04	0.02	0.1	0.005	0.003	0.45	0.03		
SRC-AI-1	0	0.063158	0.051579	0.016842	0.031579	0.042105	0.021053	0.105263	0.005263	0.003158	0.473684	0.031579		
SRC-AI-2	0.1	0.056842	0.046421	0.015158	0.028421	0.037895	0.018947	0.094737	0.004737	0.002842	0.426316	0.028421		
SRC-B-2	0.051064	0.04	0.050043	0.01634	0.030638	0.040851	0.020426	0.102128	0.005106	0.003064	0.459574	0.030638		
SRC-B-3	0.046809	0.12	0.045872	0.014979	0.028085	0.037447	0.018723	0.093617	0.004681	0.002809	0.421277	0.028085		
SRC-Ca-1	0.052576	0.063091	0	0.016824	0.031546	0.042061	0.02103	0.105152	0.005258	0.003155	0.473186	0.031546		
SRC-Ca-2	0.051525	0.06183	0.02	0.016488	0.030915	0.04122	0.02061	0.103049	0.005152	0.003091	0.463722	0.030915		
SRC-Ca-3	0.04837	0.058044	0.08	0.015478	0.029022	0.038696	0.019348	0.09674	0.004837	0.002902	0.435331	0.029022		
SRC-Ce-1	0.052356	0.062827	0.051309	0.016754	0.031414	0.041885	0.020942	0.104712	0.005236	0.003141	0.471204	0.031414		
SRC-Ce-2	0.051047	0.061257	0.050026	0.016335	0.030628	0.040838	0.020419	0.102094	0.005105	0.003063	0.459424	0.030628		
SRC-Ce-3	0.048953	0.058743	0.047974	0.015665	0.029372	0.039162	0.019581	0.097906	0.004895	0.002937	0.440576	0.029372		
SRC-K-1	0.051546	0.061856	0.050515	0.016495	0	0.041237	0.020619	0.103093	0.005155	0.003093	0.463918	0.030928		
SRC-K-2	0.048454	0.058144	0.047485	0.015505	0.06	0.038763	0.019381	0.096907	0.004845	0.002907	0.436082	0.029072		
SRC-Li-1	0.052083	0.0625	0.051042	0.016667	0.03125	0	0.020833	0.104167	0.005208	0.003125	0.46875	0.03125		
SRC-Li-2	0.051302	0.061563	0.050276	0.016417	0.030781	0.015	0.020521	0.102604	0.00513	0.003078	0.461719	0.030781		
SRC-Li-3	0.04974	0.059688	0.048745	0.015917	0.029844	0.045	0.019896	0.099479	0.004974	0.002984	0.447656	0.029844		
SRC-Na-1	0.055556	0.066667	0.054444	0.017778	0.033333	0.044444	0.022222	0	0.005556	0.003333	0.5	0.033333		

Appendix A. Glass Composition and TCLP Release Data

LANL Glasses (Vienna et al. 1998)

Glass ID	BaO	Bi2O3	CdO	CeO2	Cl	CoO	Cr2O3	Cs2O	CuO	F	Gd2O3	La2O3	MnO2	MnO
LANL-R	4E-05		2E-05	0.0019			0.00226							
LANL-S	6E-05		3E-05	0.00285			0.003391							
LANL-T	4E-05		2E-05	0.0019			0.00226							
LANL-U	4E-05		2E-05	0.0019			0.00226							
LANL-U	4E-05		2E-05	0.0019			0.00226							
LANL-V	0		0	4E-05			0.00047							
LANL-X	0.00011		0	0.00167			0.01891							
LANL-Y	0.00011		0	0.00167			0.01891							
LANL-Z	0.00011		0	0.00167			0.01891							
LANL-AA	0.00011		0	0.00167			0.01891							
LANL-AB	0.00011		0	0.00167			0.01891							
LANL-AC	0		0	4E-05			0.00047							
LANL-AD	0.00011		0	0.00167			0.01891							
LANL-AE	0		0	4E-05			0.00047							
LANL-AF	0		0	4E-05			0.00047							
LANL-AG	0		0	4E-05			0.00047							
LANL-AH	0.00011		0	0.00167			0.01891							
LANL-AI	0.00011		0	0.00167			0.01891							
LANL-AJ	0.00011		0	0.00167			0.01891							
LANL-AK	0.00011		0	0.00167			0.01891							

Plutonium Residue Glasses (Bulkley and Vienna 1997)

SRC-BL	0.0022			0.045	0.005		0.004	0.01	0.0004	0.001	0.045			
SRC-AI-1	0.002316			0.047368	0.005263		0.004211	0.010526	0.000421	0.001053	0.047368			
SRC-AI-2	0.002084			0.042632	0.004737		0.003789	0.009474	0.000379	0.000947	0.042632			
SRC-B-2	0.002247			0.045957	0.005106		0.004085	0.010213	0.000409	0.001021	0.045957			
SRC-B-3	0.00206			0.042128	0.004681		0.003745	0.009362	0.000374	0.000936	0.042128			
SRC-Ca-1	0.002313			0.047319	0.005258		0.004206	0.010515	0.000421	0.001052	0.047319			
SRC-Ca-2	0.002267			0.046372	0.005152		0.004122	0.010305	0.000412	0.00103	0.046372			
SRC-Ca-3	0.002128			0.043533	0.004837		0.00387	0.009674	0.000387	0.000967	0.043533			
SRC-Ce-1	0.002304			0	0.005236		0.004188	0.010471	0.000419	0.001047	0.04712			
SRC-Ce-2	0.002246			0.025	0.005105		0.004084	0.010209	0.000408	0.001021	0.045942			
SRC-Ce-3	0.002154			0.065	0.004895		0.003916	0.009791	0.000392	0.000979	0.044058			
SRC-K-1	0.002268			0.046392	0.005155		0.004124	0.010309	0.000412	0.001031	0.046392			
SRC-K-2	0.002132			0.043608	0.004845		0.003876	0.009691	0.000388	0.000969	0.043608			
SRC-Li-1	0.002292			0.046875	0.005208		0.004167	0.010417	0.000417	0.001042	0.046875			
SRC-Li-2	0.002257			0.046172	0.00513		0.004104	0.01026	0.00041	0.001026	0.046172			
SRC-Li-3	0.002189			0.044766	0.004974		0.003979	0.009948	0.000398	0.000995	0.044766			
SRC-Na-1	0.002444			0.05	0.005556		0.004444	0.011111	0.000444	0.001111	0.05			

Appendix A. Glass Composition and TCLP Release Data

LANL Glasses (Vienna et al. 1998)

Glass ID	MoO	MoO3	Nd2O3	PbO	PdO	ReO2	Rh2O3	RuO2	Sb2O3	Sb2O5	SeO2	SnO	SnO2
LANL-R			0	0.000161									
LANL-S			0	0.000241									
LANL-T			0	0.000161									
LANL-U			0	0.00016									
LANL-U			0	0.00016									
LANL-V			0.00023	1E-05									
LANL-X			0.0091	0.0005									
LANL-Y			0.0091	0.0005									
LANL-Z			0.0091	0.0005									
LANL-AA			0.0091	0.0005									
LANL-AB			0.0091	0.0005									
LANL-AC			0.00023	1E-05									
LANL-AD			0.0091	0.0005									
LANL-AE			0.00023	1E-05									
LANL-AF			0.00023	1E-05									
LANL-AG			0.00023	1E-05									
LANL-AH			0.0091	0.0005									
LANL-AI			0.0091	0.0005									
LANL-AJ			0.0091	0.0005									
LANL-AK			0.0091	0.0005									

Plutonium Residue Glasses (Bulkley and Vienna 1997)

SRC-BL		0.0064	0.008	0.01								0	
SRC-AI-1		0.006737	0.008421	0.010526								0	
SRC-AI-2		0.006063	0.007579	0.009474								0	
SRC-B-2		0.006536	0.00817	0.010213								0	
SRC-B-3		0.005991	0.007489	0.009362								0	
SRC-Ca-1		0.00673	0.008412	0.010515								0	
SRC-Ca-2		0.006595	0.008244	0.010305								0	
SRC-Ca-3		0.006191	0.007739	0.009674								0	
SRC-Ce-1		0.006702	0.008377	0.010471								0	
SRC-Ce-2		0.006534	0.008168	0.010209								0	
SRC-Ce-3		0.006266	0.007832	0.009791								0	
SRC-K-1		0.006598	0.008247	0.010309								0	
SRC-K-2		0.006202	0.007753	0.009691								0	
SRC-Li-1		0.006667	0.008333	0.010417								0	
SRC-Li-2		0.006567	0.008208	0.01026								0	
SRC-Li-3		0.006367	0.007958	0.009948								0	
SRC-Na-1		0.007111	0.008889	0.011111								0	

Appendix A. Glass Composition and TCLP Release Data

LANL Glasses (Vienna et al. 1998)

Glass ID	SO3	SrO	TeO2	ThO2	TiO2	Tl2O3	U3O8	UO2	UO3	V2O5	WO3	Y2O3	ZnO	Sum
LANL-R														1.0000
LANL-S														1.0000
LANL-T														1.0000
LANL-U														1.0000
LANL-U														1.0000
LANL-V														1.0000
LANL-X														1.0000
LANL-Y														1.0000
LANL-Z														1.0000
LANL-AA														1.0000
LANL-AB														1.0000
LANL-AC														1.0000
LANL-AD														1.0000
LANL-AE														1.0000
LANL-AF														1.0000
LANL-AG														1.0000
LANL-AH														1.0000
LANL-AI														1.0000
LANL-AJ														1.0000
LANL-AK														1.0000

Plutonium Residue Glasses (Bulkley and Vienna 1997)

SRC-BL					0.01									1.0000
SRC-AI-1					0.010526									1.0000
SRC-AI-2					0.009474									1.0000
SRC-B-2					0.010213									1.0000
SRC-B-3					0.009362									1.0000
SRC-Ca-1					0.010515									1.0000
SRC-Ca-2					0.010305									1.0000
SRC-Ca-3					0.009674									1.0000
SRC-Ce-1					0.010471									1.0000
SRC-Ce-2					0.010209									1.0000
SRC-Ce-3					0.009791									1.0000
SRC-K-1					0.010309									1.0000
SRC-K-2					0.009691									1.0000
SRC-Li-1					0.010417									1.0000
SRC-Li-2					0.01026									1.0000
SRC-Li-3					0.009948									1.0000
SRC-Na-1					0.011111									1.0000

Appendix A. Glass Composition and TCLP Release Data

LANL Glasses (Vienna et al. 1998)

Glass ID	TCLP B (mg/L)	TCLP Ag (mg/L)	TCLP As (mg/L)	TCLP Ba (mg/L)	TCLP Cd (mg/L)	TCLP Cr (mg/L)	TCLP Ni (mg/L)	TCLP Pb (mg/L)	TCLP Se (mg/L)	TCLP Zn (mg/L)
LANL-R	2.88666			0.02373		0.07278	0.29586			
LANL-S	1.36494			0.01716		0.08469	0.19932			
LANL-T	18.88569			0.05925	0.03909	0.3249	1.80783			
LANL-U	1.42386			0.0123			0.07074			
LANL-U	1.31898			0.01293			0.0771			
LANL-V	147.56388			0.01806			0.40101			
LANL-X	2.97198			0.01608		0.06102	0.37692			
LANL-Y	16.96671			0.06138		0.12033	2.24241			
LANL-Z	5.15775			0.06867		2.49396	3.4875			
LANL-AA	0.72159			0.02202		0.08667	0.31491			
LANL-AB	12.76827			0.03162		2.12643	4.27473			
LANL-AC	0.12081			0.01788						
LANL-AD	0.07827			0.01002			0.06963			
LANL-AE	0.12831			0.01293						
LANL-AF	0.90909			0.0147						
LANL-AG	0.52509			0.01161						
LANL-AH	80.91507			0.1371		3.10026	8.25039			
LANL-AI	2.34852			0.05286		0.54342	1.57932			
LANL-AJ	0.27108			0.01695		0.13329	0.07932			
LANL-AK	0.13272			0.01209			0.07623			

Plutonium Residue Glasses (Bulkley and Vienna 1997)

SRC-BL	0.41									
SRC-AI-1	0.5									
SRC-AI-2	0.27									
SRC-B-2	0.15									
SRC-B-3	1.24									
SRC-Ca-1	0.21									
SRC-Ca-2	0.24									
SRC-Ca-3	0.51									
SRC-Ce-1	0.58									
SRC-Ce-2	0.4									
SRC-Ce-3	0.35									
SRC-K-1	0.22									
SRC-K-2	0.39									
SRC-Li-1	0.2									
SRC-Li-2	0.24									
SRC-Li-3	0.43									
SRC-Na-1	0.19									

Appendix A. Glass Composition and TCLP Release Data

Plutonium Residue Glasses (Bulkley and Vienna 1997)

Glass ID	Al2O3	B2O3	CaO	Fe2O3	K2O	Li2O	MgO	Na2O	NiO	P2O5	SiO2	ZrO2	Ag2O	As2O3
SRC-Na-2	0.051111	0.061333	0.050089	0.016356	0.030667	0.040889	0.020444	0.08	0.005111	0.003067	0.46	0.030667		
SRC-Pb-1	0.050505	0.060606	0.049495	0.016162	0.030303	0.040404	0.020202	0.10101	0.005051	0.00303	0.454545	0.030303		
SRC-Pb-2	0.04798	0.057576	0.04702	0.015354	0.028788	0.038384	0.019192	0.09596	0.004798	0.002879	0.431818	0.028788		
SRC-Si-1	0.054545	0.065455	0.053455	0.017455	0.032727	0.043636	0.021818	0.109091	0.005455	0.003273	0.4	0.032727		
SRC-Si-2	0.040909	0.049091	0.040091	0.013091	0.024545	0.032727	0.016364	0.081818	0.004091	0.002455	0.55	0.024545		
SRC-Sn-1	0.049	0.0588	0.04802	0.01568	0.0294	0.0392	0.0196	0.098	0.0049	0.00294	0.441	0.0294		
SRC-Sn-2	0.048	0.0576	0.04704	0.01536	0.0288	0.0384	0.0192	0.096	0.0048	0.00288	0.432	0.0288		
SRC-Ti-1	0.050505	0.060606	0.049495	0.016162	0.030303	0.040404	0.020202	0.10101	0.005051	0.00303	0.454545	0.030303		
SRC-Ti-2	0.04798	0.057576	0.04702	0.015354	0.028788	0.038384	0.019192	0.09596	0.004798	0.002879	0.431818	0.028788		
SRC-Zr-1	0.051546	0.061856	0.050515	0.016495	0.030928	0.041237	0.020619	0.103093	0.005155	0.003093	0.463918	0		
SRC-Zr-2	0.048969	0.058763	0.04799	0.01567	0.029381	0.039175	0.019588	0.097938	0.004897	0.002938	0.440722	0.05		

SRS LLMW Glasses (Cicero-Herman 2002)

WETF-1	0.108797	0.163839	0.192348	0.025534	0.001855	8.61E-05	0.00849	0.10638	0.001393	0.01025	0.375105	2.7E-05		
WETF-2	0.11131	0.177138	0.192754	0.024419	0.001735	2.15E-05	0.008192	0.108006	0.001215	0.009609	0.350032	2.7E-05		
WETF-3	0.095476	0.06437	0.202184	0.018343	0.000617	0.044191	0.015074	0.093867	0.001088	0.012583	0.444055	0.006497		
WETF-7	0.162585	0.000397	0.199143	0.014135	0.030511	3.59E-05	0.008037	0.034437	0.000681	0.007062	0.501088	2.36E-05		
RFP-2	0.045021	0.153663	0.025055	0.054624	0.002646	2.15E-05	0.013631	0.108181	0.000753	0.000595	0.581262	0.001021		
RFP-4	0.04153	0.070359	0.024519	0.047528	0.003336	2.15E-05	0.015378	0.077532	0.000634	0.00058	0.706853	0.00075		
RFP-5	0.06587	0.157302	0.022578	0.052375	0.002553	2.15E-05	0.017633	0.100165	0.000662	0.000458	0.592964	0.000646		
RFP-6	0.05448	0.094499	0.091209	0.203027	0.001109	2.15E-05	0.08082	0.06474	0.001175	0.000458	0.429343	0.000958		
RFP-7	0.044492	0.095412	0.042965	0.104745	0.002378	2.15E-05	0.035051	0.078341	0.000927	0.000458	0.596194	0.001063		
RFP-8	0.026297	0.077263	0.133605	0.173151	0.002439	2.7E-05	0.058946	0.158311	0.001433	0.000574	0.363457	0.001645		
RFP-9	0.041756	0.09612	0.072632	0.168524	0.001577	2.15E-05	0.056161	0.082466	0.001175	0.000564	0.444946	0.000125		
RFP-10	0.041942	0.112435	0.061318	0.15579	0.001666	2.15E-05	0.051009	0.079321	0.000974	0.000534	0.494906	0.000125		
LANL-1	0.150751	0.252434	0.212226	0.044406	9.44E-05	2.15E-05	0.021984	0.104888	0.001629	0.000641	0.218644	8.08E-05		
LANL-3	0.073275	0.071916	0.284098	0.047252	0.000675	3.59E-05	0.028871	0.03725	0.000755	0.0009	0.452334	8.59E-05		
LANL-4	0.410996	0.000129	0.252038	0.081236	0.000345	3.23E-05	0.039476	0.005271	0.000165	0.000458	0.234318	0.001		
LANL-5	0.236194	0.000429	0.227258	0.069178	0.000366	8.61E-05	0.03263	0.008731	0.00109	0.001235	0.40877	0.000126		
LANL-6	0.147469	0.000569	0.220514	0.137056	0.000387	0.000237	0.05798	0.035942	0.000954	0.000839	0.371076	0.000147		
LANL-7	0.173154	0.000161	0.278982	0.050402	0.004676	2.87E-05	0.027865	0.000449	0.000721	0.000808	0.446358	7.58E-05		
LANL-8	0.087427	0.000215	0.165926	0.032383	0.029432	6.46E-05	0.016495	0.021307	0.000901	0.000717	0.647545	7.58E-05		
LANL-9	0.134438	0.000537	0.25125	0.039641	0.000169	2.15E-05	0.025565	0.000256	0.000734	0.000656	0.540544	7.58E-05		
LANL-13	0.100307	0.259207	0.233209	0.037515	0.000149	4.31E-05	0.02263	0.11467	0.001179	0.000641	0.216469	7.58E-05		

TRU Study (Crum et al. 1997)

TRU-AZ-1	0.03	0.08027	0.009613	0.042886	0.002659	0.04515	0.00259	0.11221	0.00067	0.00858	0.46058	0.113	0.000197	
TRU-NL-1	0.02351	0.08342	0.00999	0.044564	0.002763	0.01	0.002692	0.13	0.000696	0.00891	0.4786	0.10948	0.000205	
TRU-ZN-1	0.02211	0.07845	0.009395	0.041913	0.002599	0.04413	0.002532	0.13	0.000655	0.00838	0.45013	0.12	0.000193	

Appendix A. Glass Composition and TCLP Release Data

Plutonium Residue Glasses (Bulkley and Vienna 1997)

Glass ID	BaO	Bi2O3	CdO	CeO2	Cl	CoO	Cr2O3	Cs2O	CuO	F	Gd2O3	La2O3	MnO2	MnO
SRC-Na-2	0.002249			0.046	0.005111		0.004089	0.010222	0.000409	0.001022	0.046			
SRC-Pb-1	0.002222			0.045455	0.005051		0.00404	0.010101	0.000404	0.00101	0.045455			
SRC-Pb-2	0.002111			0.043182	0.004798		0.003838	0.009596	0.000384	0.00096	0.043182			
SRC-Si-1	0.0024			0.049091	0.005455		0.004364	0.010909	0.000436	0.001091	0.049091			
SRC-Si-2	0.0018			0.036818	0.004091		0.003273	0.008182	0.000327	0.000818	0.036818			
SRC-Sn-1	0.002156			0.0441	0.0049		0.00392	0.0098	0.000392	0.00098	0.0441			
SRC-Sn-2	0.002112			0.0432	0.0048		0.00384	0.0096	0.000384	0.00096	0.0432			
SRC-Ti-1	0.002222			0.045455	0.005051		0.00404	0.010101	0.000404	0.00101	0.045455			
SRC-Ti-2	0.002111			0.043182	0.004798		0.003838	0.009596	0.000384	0.00096	0.043182			
SRC-Zr-1	0.002268			0.046392	0.005155		0.004124	0.010309	0.000412	0.001031	0.046392			
SRC-Zr-2	0.002155			0.044072	0.004897		0.003918	0.009794	0.000392	0.000979	0.044072			

SRS LLMW Glasses (Cicero-Herman 2002)

WETF-1	0.000466		8.75E-06	0.000246			0.002236		0.000789				4.75E-05	
WETF-2	0.000373		8.75E-06	0.000233			0.001973		0.000688				0	
WETF-3	0.000361		1.14E-05	0.000246			0.001959		0.000701				0	
WETF-7	0.000676		8.75E-06	0.000909			0.000207		0.000655				0.000622	
RFP-2	2.61E-05		5.33E-05				0.000805		1.41E-05				0.000153	
RFP-4	4.09E-05		3.05E-05				0.00058		1.41E-05				0.000153	
RFP-5	0		3.05E-05				0.000608		1.41E-05				0.0001	
RFP-6	0		0.000388				0.000978		1.41E-05				0.000227	
RFP-7	0		0.000137				0.000729		1.41E-05				0.0002	
RFP-8	0		0.000339				0.001189		1.76E-05				0.000159	
RFP-9	0		0.000346				0.001136		1.41E-05				0.000158	
RFP-10	0		0.000366				0.000935		1.41E-05				0.000195	
LANL-1	0.00047		0.00033	0.001425			0.000982		1.25E-05				0.00057	
LANL-3	0.000602		0.000242	0.001159			0.000683		1.25E-05				3.17E-05	
LANL-4	0.000419		9.63E-05	0.000246			0.001434		4.19E-05				0.000111	
LANL-5	0.000365		0.000236	0.002244			0.001027		2.09E-05				0.000264	
LANL-6	0.000489		0.000324	0.000348			0.001151		3.34E-05				0.000269	
LANL-7	0.000637		0.000268	0.000246			0.00084		1.25E-05				1.58E-05	
LANL-8	0.000466		0.000231	0.000246			0.001087		8.35E-05				0.000744	
LANL-9	0.000474		0.000321	0.000246			0.000734		1.25E-05				2.64E-05	
LANL-13	0.000951		0.000622	0.000246			0.000906		1.25E-05				3.17E-05	

TRU Study (Crum et al. 1997)

TRU-AZ-1	0.000433	0.05334		0			0.003546		0.000158	0.004137		0.010638		0.01704
TRU-NL-1	0.00045	0.05543		0			0.003685		0.000164	0.004299		0.011054		0.017707
TRU-ZN-1	0.000424	0.05213		0			0.003465		0.000154	0.004043		0.010396		0.016654

Appendix A. Glass Composition and TCLP Release Data

Plutonium Residue Glasses (Bulkley and Vienna 1997)

Glass ID	MoO	MoO3	Nd2O3	PbO	PdO	ReO2	Rh2O3	RuO2	Sb2O3	Sb2O5	SeO2	SnO	SnO2
SRC-Na-2		0.006542	0.008178	0.010222								0	
SRC-Pb-1		0.006465	0.008081	0								0	
SRC-Pb-2		0.006141	0.007677	0.05								0	
SRC-Si-1		0.006982	0.008727	0.010909								0	
SRC-Si-2		0.005236	0.006545	0.008182								0	
SRC-Sn-1		0.006272	0.00784	0.0098								0.02	
SRC-Sn-2		0.006144	0.00768	0.0096								0.04	
SRC-Ti-1		0.006465	0.008081	0.010101								0	
SRC-Ti-2		0.006141	0.007677	0.009596								0	
SRC-Zr-1		0.006598	0.008247	0.010309								0	
SRC-Zr-2		0.006268	0.007835	0.009794								0	

SRS LLMW Glasses (Cicero-Herman 2002)

WETF-1				0.000452									
WETF-2				0.000215									
WETF-3				0.000215									
WETF-7				0.000215									
RFP-2				0.000215									
RFP-4				0.000215									
RFP-5				0.000215									
RFP-6				0.000215									
RFP-7				0.000215									
RFP-8				0.00027									
RFP-9				0.0053									
RFP-10				0.000205									
LANL-1				0.00056									
LANL-3				0.000596									
LANL-4				0.000242									
LANL-5				0.000689									
LANL-6				0.000725									
LANL-7				0.0007									
LANL-8				0.000406									
LANL-9				0.0006									
LANL-13				0.000697									

TRU Study (Crum et al. 1997)

TRU-AZ-1				0.001133									
TRU-NL-1				0.001177									
TRU-ZN-1				0.001107									

Appendix A. Glass Composition and TCLP Release Data

Plutonium Residue Glasses (Bulkley and Vienna 1997)

Glass ID	SO3	SrO	TeO2	ThO2	TiO2	Tl2O3	U3O8	UO2	UO3	V2O5	WO3	Y2O3	ZnO	Sum
SRC-Na-2					0.010222									1.0000
SRC-Pb-1					0.010101									1.0000
SRC-Pb-2					0.009596									1.0000
SRC-Si-1					0.010909									1.0000
SRC-Si-2					0.008182									1.0000
SRC-Sn-1					0.0098									1.0000
SRC-Sn-2					0.0096									1.0000
SRC-Ti-1					0									1.0000
SRC-Ti-2					0.05									1.0000
SRC-Zr-1					0.010309									1.0000
SRC-Zr-2					0.009794									1.0000

SRS LLMW Glasses (Cicero-Herman 2002)

WETF-1					0.000984								0.00112	1.0005
WETF-2					0.000784								0.001207	0.9899
WETF-3					5E-05								0.001245	1.0031
WETF-7					0.00035								0.000112	0.9619
RFP-2					0.001268								0.000481	0.9895
RFP-4					0.001562								0.000477	0.9921
RFP-5					0.001195								0.000581	1.0160
RFP-6					0.000734								0.000448	1.0248
RFP-7					0.001151								0.000531	1.0050
RFP-8					0.000369								0.00051	1.0000
RFP-9					0.000812								0.000514	0.9743
RFP-10					0.000878								0.000423	1.0031
LANL-1					1.67E-05								3.73E-05	1.0122
LANL-3					0.000467								1.24E-05	1.0013
LANL-4					0.000384								0.000205	1.0286
LANL-5					0.000595								1.24E-05	0.9915
LANL-6					0.000161								7.47E-05	0.9767
LANL-7					3.89E-05								0.000162	0.9866
LANL-8					0.000484								3.32E-05	1.0063
LANL-9					2.78E-05								1.24E-05	0.9963
LANL-13					3.34E-05								1.24E-05	0.9896

TRU Study (Crum et al. 1997)

TRU-AZ-1		0.000591											0.000512	0.9999
TRU-NL-1		0.000614											0.000532	0.9999
TRU-ZN-1		0.000578											0.000501	0.9999

Appendix A. Glass Composition and TCLP Release Data

Plutonium Residue Glasses (Bulkley and Vienna 1997)

Glass ID	TCLP B (mg/L)	TCLP Ag (mg/L)	TCLP As (mg/L)	TCLP Ba (mg/L)	TCLP Cd (mg/L)	TCLP Cr (mg/L)	TCLP Ni (mg/L)	TCLP Pb (mg/L)	TCLP Se (mg/L)	TCLP Zn (mg/L)
SRC-Na-2	0.27									
SRC-Pb-1	0.31									
SRC-Pb-2	0.36									
SRC-Si-1	0.55									
SRC-Si-2	0.11									
SRC-Sn-1	0.3									
SRC-Sn-2	0.25									
SRC-Ti-1	0.41									
SRC-Ti-2	0.27									
SRC-Zr-1	0.49									
SRC-Zr-2	0.32									

SRS LLMW Glasses (Cicero-Herman 2002)

WETF-1	27.59275			0.56925			0.16275			
WETF-2	43.27325			0.5655			0.1935			
WETF-3	9.31825			0.4075			0.0995			
WETF-7	2.328			0.84			0.171			
RFP-2	8.449			0.717	0.012	0.101				
RFP-4	0.503			0.729		0.091	0.103	0.353		
RFP-5	2.273			0.504		0.056	0.08			
RFP-6	1.624			0.931	0.013	0.054		0.408		
RFP-7	1.128			0.648	0.011	0.137		0.22		
RFP-8	222.91			0.386	2.196	3.078	0.407	0.431		
RFP-9	44.87			0.525	0.448	0.729	0.153	0.221		
RFP-10	2.849			0.608						
LANL-1	229.14			0.564	0.159		0.166			
LANL-3	22.432			0.764	0.347		0.307			
LANL-4				0.462	0.016					
LANL-5				0.384						
LANL-6				0.32	0.013					
LANL-7				0.506	0.028					
LANL-8	0.083			0.625				0.214		
LANL-9				0.398						
LANL-13	269.18			0.745	0.08		0.051			

TRU Study (Crum et al. 1997)

TRU-AZ-1	0.65		0.064	0.066						
TRU-NL-1	0.48	0.011		0.062	0.0029					
TRU-ZN-1	0.7		0.079	0.078		0.011		0.046		

Appendix A. Glass Composition and TCLP Release Data

TRU Study (Crum et al. 1997)

Glass ID	Al2O3	B2O3	CaO	Fe2O3	K2O	Li2O	MgO	Na2O	NiO	P2O5	SiO2	ZrO2	Ag2O	As2O3
TRU-ABZ-1	0.04	0.1	0.009159	0.040858	0.002534	0.04302	0.002468	0.1069	0.000638	0.00817	0.43881	0.12	0.000188	
TRU-NBZ-1	0.02271	0.06	0.009654	0.043065	0.002671	0.04534	0.002601	0.13	0.000673	0.00861	0.4625	0.12	0.000198	
TRU-B-2	0.0245	0.02	0.01041	0.04646	0.002881	0.04891	0.00281	0.12155	0.000726	0.00929	0.49891	0.11413	0.000213	
TRU-Li-2	0.02371	0.08413	0.01008	0.04495	0.002787	0.015	0.00272	0.1176	0.000702	0.00899	0.48272	0.11043	0.000206	
TRU-Si-1	0.02545	0.09032	0.01082	0.04825	0.002992	0.0508	0.00292	0.12625	0.000754	0.00965	0.41	0.11854	0.000222	
TRU-Si-3	0.02718	0.09644	0.01154	0.05152	0.003195	0.05425	0.00311	0.1348	0.000805	0.0103	0.37	0.12658	0.000237	
TRU-Zr-2	0.02263	0.08031	0.00962	0.0429	0.002661	0.04517	0.00259	0.11226	0.00067	0.00858	0.46078	0.12	0.000197	
TRU-Zr-3	0.02212	0.07848	0.00939	0.04193	0.0026	0.04415	0.00253	0.10971	0.000655	0.00839	0.45031	0.14	0.000193	
TRU-Zr-4	0.0216	0.07666	0.00917	0.04095	0.00254	0.04312	0.00247	0.10715	0.00064	0.00819	0.43984	0.16	0.000188	

SP3, SPx4, Misc. (Vienna et al. 2001)

c106b-2	0.144	0.1094	0.0018	0.0781	0	0.0599	0.0005	0.1311	0	0.0094	0.4501	0.0005	0.001496	0.00034
---------	-------	--------	--------	--------	---	--------	--------	--------	---	--------	--------	--------	----------	---------

Nepheline Precipitation Study (Li et al. 1997)

NP-Al-3	0.1768	0.0764	0.0107	0.0949	0.001	0.043	0.0065	0.1936	0.000662	0.009458	0.3664	0.0028	0.001324	0.000189
NP-Al-4	0.1929	0.0749	0.0105	0.093	0.0009	0.0421	0.0064	0.1898	0.000655	0.009356	0.3592	0.0027	0.00131	0.000187
NP-Na-1	0.1496	0.087	0.0122	0.1081	0.0011	0.0489	0.0074	0.133	0.000762	0.010881	0.4174	0.0032	0.001523	0.000218
NP-Na-2	0.147	0.0855	0.012	0.1062	0.0011	0.0481	0.0073	0.1481	0.000747	0.010678	0.4101	0.0031	0.001495	0.000214
NP-Li-1	0.1441	0.0838	0.0117	0.1041	0.001	0	0.0071	0.2123	0.000736	0.010508	0.4019	0.003	0.001471	0.00021
NP-Ca-1	0.1392	0.0809	0	0.1005	0.001	0.0455	0.0069	0.2051	0.000707	0.010102	0.3882	0.0029	0.001414	0.000202
NP-Fe-2	0.1408	0.0819	0.0115	0.0795	0.001	0.046	0.007	0.2075	0.000691	0.009864	0.3927	0.003	0.001381	0.000197

Appendix A. Glass Composition and TCLP Release Data

TRU Study (Crum et al. 1997)

Glass ID	BaO	Bi2O3	CdO	CeO2	Cl	CoO	Cr2O3	Cs2O	CuO	F	Gd2O3	La2O3	MnO2	MnO
TRU-ABZ-1	0.000413	0.05082		0			0.003378		0.00015	0.003941		0.010135		0.016234
TRU-NBZ-1	0.000435	0.05356		0			0.003561		0.000158	0.004154		0.010682		0.017111
TRU-B-2	0.000469	0.05778		0			0.003841		0.000171	0.004481		0.011523		0.018458
TRU-Li-2	0.000454	0.0559		0			0.003716		0.000165	0.004336		0.011149		0.017859
TRU-Si-1	0.000488	0.06001		1E-07			0.00399		0.000177	0.004654		0.011969		0.019172
TRU-Si-3	0.000521	0.06408		0			0.00426		0.000189	0.00497		0.01278		0.020472
TRU-Zr-2	0.000434	0.05336		1E-07			0.003547		0.000158	0.004139		0.010642		0.017048
TRU-Zr-3	0.000424	0.05215		0			0.003467		0.000154	0.004045		0.010401		0.01666
TRU-Zr-4	0.000414	0.05094		0			0.003386		0.00015	0.003951		0.010159		0.016273

SP3, SPx4, Misc. (Vienna et al. 2001)

c106b-2	0.000258	0	0	0	0		0.001692	0	0.000246	0		0		0.003853
---------	----------	---	---	---	---	--	----------	---	----------	---	--	---	--	----------

Nepheline Precipitation Study (Li et al. 1997)

NP-Al-3	0.003216		0.000189				0.001892		0.000284					0.003972
NP-Al-4	0.003181		0.000187				0.001871		0.000281					0.003929
NP-Na-1	0.0037		0.000218				0.002176		0.000326					0.00457
NP-Na-2	0.003631		0.000214				0.002136		0.00032					0.004485
NP-Li-1	0.003573		0.00021				0.002102		0.000315					0.004414
NP-Ca-1	0.003435		0.000202				0.00202		0.000303					0.004243
NP-Fe-2	0.003354		0.000197				0.001973		0.000296					0.004143

Appendix A. Glass Composition and TCLP Release Data

TRU Study (Crum et al. 1997)

Glass ID	MoO	MoO3	Nd2O3	PbO	PdO	ReO2	Rh2O3	RuO2	Sb2O3	Sb2O5	SeO2	SnO	SnO2
TRU-ABZ-1				0.001079									
TRU-NBZ-1				0.001137									
TRU-B-2				0.001227									
TRU-Li-2				0.001187									
TRU-Si-1				0.001274									
TRU-Si-3				0.001361									
TRU-Zr-2				0.001133									
TRU-Zr-3				0.001107									
TRU-Zr-4				0.001082									

SP3, SPx4, Misc. (Vienna et al. 2001)

c106b-2		0	0	0	0		0	0	0.002302		0.001198		
---------	--	---	---	---	---	--	---	---	----------	--	----------	--	--

Nepheline Precipitation Study (Li et al. 1997)

NP-Al-3				0.002648					0.001513		0.000757		
NP-Al-4				0.00262					0.001497		0.000748		
NP-Na-1				0.003047					0.001741		0.000871		
NP-Na-2				0.00299					0.001708		0.000854		
NP-Li-1				0.002942					0.001681		0.000841		
NP-Ca-1				0.002828					0.001616		0.000808		
NP-Fe-2				0.002762					0.001578		0.000789		

Appendix A. Glass Composition and TCLP Release Data

TRU Study (Crum et al. 1997)

Glass ID	SO3	SrO	TeO2	ThO2	TiO2	Tl2O3	U3O8	UO2	UO3	V2O5	WO3	Y2O3	ZnO	Sum
TRU-ABZ-1		0.000563											0.000488	0.9999
TRU-NBZ-1		0.000593											0.000514	0.9999
TRU-B-2		0.00064											0.000555	0.9999
TRU-Li-2		0.000619											0.000537	0.9999
TRU-Si-1		0.000665											0.000576	0.9999
TRU-Si-3		0.00071											0.000615	0.9999
TRU-Zr-2		0.000591											0.000512	0.9999
TRU-Zr-3		0.000578											0.000501	0.9999
TRU-Zr-4		0.000564											0.000489	0.9999

SP3, SPx4, Misc. (Vienna et al. 2001)

c106b-2	0	8.59E-05	0		0.000365		0				0	0	8.04E-05	0.9967
---------	---	----------	---	--	----------	--	---	--	--	--	---	---	----------	--------

Nepheline Precipitation Study (Li et al. 1997)

NP-Al-3		9.46E-05			0.001608								9.46E-05	1.0000
NP-Al-4		9.36E-05			0.001591								9.36E-05	1.0000
NP-Na-1		0.000109			0.00185								0.000109	1.0000
NP-Na-2		0.000107			0.001815								0.000107	1.0000
NP-Li-1		0.000105			0.001786								0.000105	1.0000
NP-Ca-1		0.000101			0.001717								0.000101	1.0000
NP-Fe-2		9.86E-05			0.001677								9.86E-05	1.0000

Appendix A. Glass Composition and TCLP Release Data

TRU Study (Crum et al. 1997)

Glass ID	TCLP B (mg/L)	TCLP Ag (mg/L)	TCLP As (mg/L)	TCLP Ba (mg/L)	TCLP Cd (mg/L)	TCLP Cr (mg/L)	TCLP Ni (mg/L)	TCLP Pb (mg/L)	TCLP Se (mg/L)	TCLP Zn (mg/L)
TRU-ABZ-1	0.8	0.0073		0.095	0.0027	0.009		0.053		
TRU-NBZ-1	0.53		0.065	0.073	0.003	0.015				
TRU-B-2	0.16	0.0066		0.11		0.0044				
TRU-Li-2	0.47			0.065		0.0091				
TRU-Si-1	1.1		0.075	0.084		0.023				
TRU-Si-3	1.7		0.071	0.12		0.013				
TRU-Zr-2	0.61		0.11	0.13		0.012				
TRU-Zr-3	0.62	0.008	0.044	0.085	0.0029	0.0099				
TRU-Zr-4	0.51			0.072		0.0074				

SP3, SPx4, Misc. (Vienna et al. 2001)

c106b-2	0.77	0.024		0.069						
---------	------	-------	--	-------	--	--	--	--	--	--

Nepheline Precipitation Study (Li et al. 1997)

NP-Al-3	2.9	0.061	0.11	0.41		0.079		0.12		
NP-Al-4	3	0.1		0.35	0.0024	0.099		0.25		
NP-Na-1	0.94	0.045	0.11	0.19				0.12		
NP-Na-2	1.2	0.044	0.058	0.21	0.004					
NP-Li-1	0.79	0.027		0.16				0.061		
NP-Ca-1	1.6	0.069	0.067	0.25		0.015		0.079	0.037	
NP-Fe-2	1.6	0.054		0.24		0.024		0.17		