



Pacific Northwest
NATIONAL LABORATORY

Proudly Operated by Battelle Since 1965

Watchmen 2.5.2 Release Notes

DT Keller
TJ Suckow
MW Cooper

April 27, 2020

DISCLAIMER

This report was prepared as an account of work sponsored by an agency of the United States Government. Neither the United States Government nor any agency thereof, nor Battelle Memorial Institute, nor any of their employees, makes **any warranty, express or implied, or assumes any legal liability or responsibility for the accuracy, completeness, or usefulness of any information, apparatus, product, or process disclosed, or represents that its use would not infringe privately owned rights.** Reference herein to any specific commercial product, process, or service by trade name, trademark, manufacturer, or otherwise does not necessarily constitute or imply its endorsement, recommendation, or favoring by the United States Government or any agency thereof, or Battelle Memorial Institute. The views and opinions of authors expressed herein do not necessarily state or reflect those of the United States Government or any agency thereof.

PACIFIC NORTHWEST NATIONAL LABORATORY
operated by
BATTELLE
for the
UNITED STATES DEPARTMENT OF ENERGY
under Contract DE-AC05-76RL01830

Printed in the United States of America

Available to DOE and DOE contractors from
the Office of Scientific and Technical Information,
P.O. Box 62, Oak Ridge, TN 37831-0062

www.osti.gov
ph: (865) 576-8401
fox: (865) 576-5728
email: reports@osti.gov

Available to the public from the National Technical Information Service
5301 Shawnee Rd., Alexandria, VA 22312
ph: (800) 553-NTIS (6847)
or (703) 605-6000
email: info@ntis.gov
Online ordering: <http://www.ntis.gov>

1 Changes since version 2.5.1

1.1 RASA State of Health (SOH) Parser Updated

Issue:

- RASA sensor data stream had unknown sensors that do not conform the original format structure. The RASA RMSSOH files do not report sensor data in the #PROCESS_SENSOR section, rather they report in a custom #RASAData section. Therefore, the additional sensors were not processed. This data was being stored into a separate SOH_RASA_DATA database table rather than being stored in the SOH_PROCESS_SENSOR with the rest of the #PROCESS_SENSOR data.
 - When Mothman attempts to process a RASA RMSSOH file and parse the table, it expects a set number of columns that correspond to specific sensors and a timestamp
 - As more sensors are added to RASA RMSSOH file and specifically the table, the Mothman parser is unable to process the table since it does not meet the predefined format, and thus the files are being placed into the error queue.
 - Because the number of sensors will likely change in the future, rather than updating the SOH_RASA_DATA table with additional columns each time the sensor collection is changed, the Mothman parser will dynamically parse the #RASAData section and ingest them into the SOH_PROCESS_SENSOR table.
 - This has the added benefit of all the SOH data being in a single table, allowing a single method to access SOH data, independent of system.

1.2 Various Fixes

- Fixed URL path for loading select images.
- Fixed the 30-keV (Region 4 – coincidence Gamma projection) graph interpreting the region incorrectly.
- Fixed the coding so an analyst is able to pass a measurement to another role.
- Fixed a bug causing 7-Region analysis results to be stored in the database as Bq/m³ instead of mBq/m³.
- Fixed a bug causing extremely verbose logging.
- Fixed a rare bug that could cause analysis code to no longer perform additional analysis.

1.3 Miscellaneous Changes

- Internet Explorer is no longer supported.

2 Upgrade

There are three parts to this upgrade, these upgrades need to be performed in order, without skipping any steps, or erroneous behavior may result.

2.1 Java Upgrade

The minimum required version of Java has been changed to Java 8.

- Run the following to determine if system is running Java 8 or higher:

```
java -version
```

- If the version is “1.8” or higher the remainder of this section can be skipped and proceed to the Database Upgrade instructions.

To install Java 8 (OpenJDK8)

- Run the following to install:

```
yum install -y java-1.8.0-openjdk
```

- Verify that system is pointing to OpenJDK 8:

```
java -version
```

If version returned is not 1.8.x_y then the new install has not been selected as the default version and the user will need to adjust the system's configuration.

- Run the following

```
alternatives --config java
```

- Sample response:

```
There are 4 programs which provide 'java'.
```

<i>Selection</i>	<i>Command</i>
<i>1</i>	<i>/usr/lib/jvm/jre-1.5.0-gcj/bin/java</i>
<i>*+ 2</i>	<i>/usr/lib/jvm/jre-1.6.0-openjdk.x86_64/bin/java</i>
<i>3</i>	<i>/usr/lib/jvm/jre-1.7.0-openjdk.x86_64/bin/java</i>
<i>4</i>	<i>/usr/lib/jvm/jre-1.8.0-openjdk.x86_64/bin/java</i>

```
Enter to keep the current selection[+], or type selection number:
```

- In the example the user should select 4
- Verify that system is now pointing to OpenJDK 8 by default

```
java -version
```

2.2 Database Upgrade

Perform the database upgrade, connecting with the SQL client of choice and run the following scripts.

Note: The script does not specify the Schema Name, so ensure you connect appropriately to avoid altering the wrong schema.

- SQLUpgrade2.5.2.sql

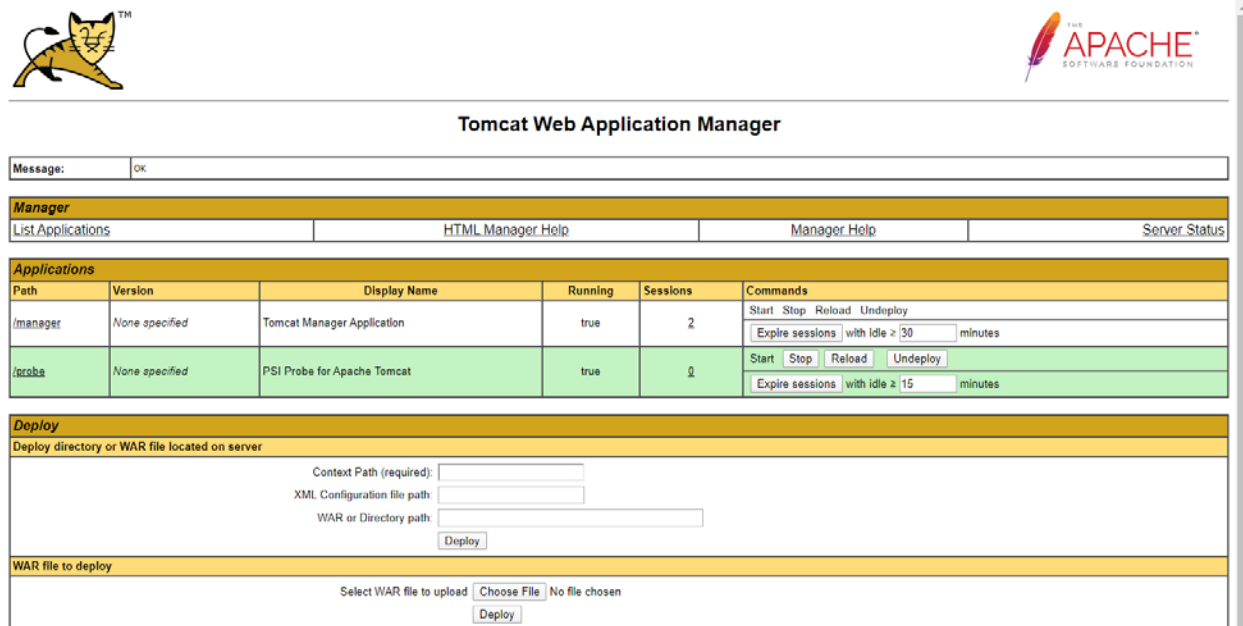
Note: If you have already run the above scripts, there is no need to run them again.

2.3 Executable Upgrade

The upgrade is completed by deploying the new WAR files and updating the Analysis Tools executables, see sections 2.3.1– 2.3.3.

2.3.1 Accessing the Tomcat Manager App

The easiest way to stop and update WAR deployments is via the /manager application on Tomcat.



The image shows the Tomcat Web Application Manager interface. At the top left is the Tomcat logo (a cat), and at the top right is the Apache Software Foundation logo. The title "Tomcat Web Application Manager" is centered. Below the title is a message box showing "Message: OK". The main content area is divided into several sections: "Manager" with links for "List Applications", "HTML Manager Help", "Manager Help", and "Server Status"; "Applications" table; "Deploy" section; and "WAR file to deploy" section.

Path	Version	Display Name	Running	Sessions	Commands
/manager	None specified	Tomcat Manager Application	true	2	Start Stop Reload Undeploy Expire sessions with idle > 30 minutes
/proba	None specified	PSI Probe for Apache Tomcat	true	0	Start Stop Reload Undeploy Expire sessions with idle > 15 minutes

Deploy
Deploy directory or WAR file located on server

Context Path (required):
XML Configuration file path:
WAR or Directory path:



WAR file to deploy

Select WAR file to upload No file chosen

Figure 1 Tomcat Web Application Manager

2.3.2 Stop the existing WAR deployments

The existing WARs should be stopped to avoid an erroneous analysis with an incompatible version of the analysis tools. Press the `Stop` button. Once WAR has stopped, press the `Undeploy` button.



Tomcat Web Application Manager

Message:

Manager

List Applications [HTML Manager Help](#) [Manager Help](#) [Server Status](#)

Applications

Path	Version	Display Name	Running	Sessions	Commands
/manager	None specified	Tomcat Manager Application	true	5	Start Stop Reload Undeploy Expire sessions with idle ≥ 30 minutes
/probe	None specified	PSI Probe for Apache Tomcat	true	0	Start Stop Reload Undeploy Expire sessions with idle ≥ 15 minutes
/webviewer2	None specified	Watchmen's Web Viewer - version 2.5.2	true	0	Start Stop Reload Undeploy Expire sessions with idle ≥ 360 minutes

Deploy

Deploy directory or WAR file located on server



Context Path (required):

XML Configuration file path:

WAR or Directory path:

Deploy

Figure 2 Webviewer Deployed and Running



Tomcat Web Application Manager

Message:

Manager

List Applications [HTML Manager Help](#) [Manager Help](#) [Server Status](#)

Applications

Path	Version	Display Name	Running	Sessions	Commands
/manager	None specified	Tomcat Manager Application	true	5	Start Stop Reload Undeploy Expire sessions with idle ≥ 30 minutes
/probe	None specified	PSI Probe for Apache Tomcat	true	0	Start Stop Reload Undeploy Expire sessions with idle ≥ 15 minutes
/webviewer2	None specified	Watchmen's Web Viewer - version 2.5.2	false	0	Start Stop Reload Undeploy

Deploy

Deploy directory or WAR file located on server

Context Path (required):

XML Configuration file path:

WAR or Directory path:

Deploy

Figure 3 Webviewer Stopped and Ready for Undeploy

2.3.3 Update the Analysis Tools

Once the AnalysisTools zip file has been placed into deployment system's filesystem, unpack and overwrite the existing AnalysisTools installation including the "plugins" folder (`unzip /path/to/file.zip -d /path/to/analysis/tools/installation/dir`).

2.3.4 Updating the WAR

Use "Select WAR file to upload" section (see Figure 1) to deploy the two WAR files (only one WAR can be deployed at a time via the dialog box). Press `Choose`, select a WAR, press `Open` and then press `Deploy`.

- mothman.war
- webviewer2.war

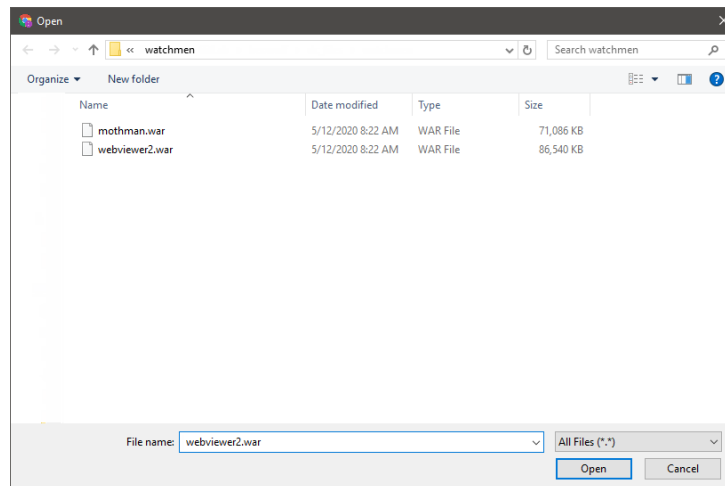
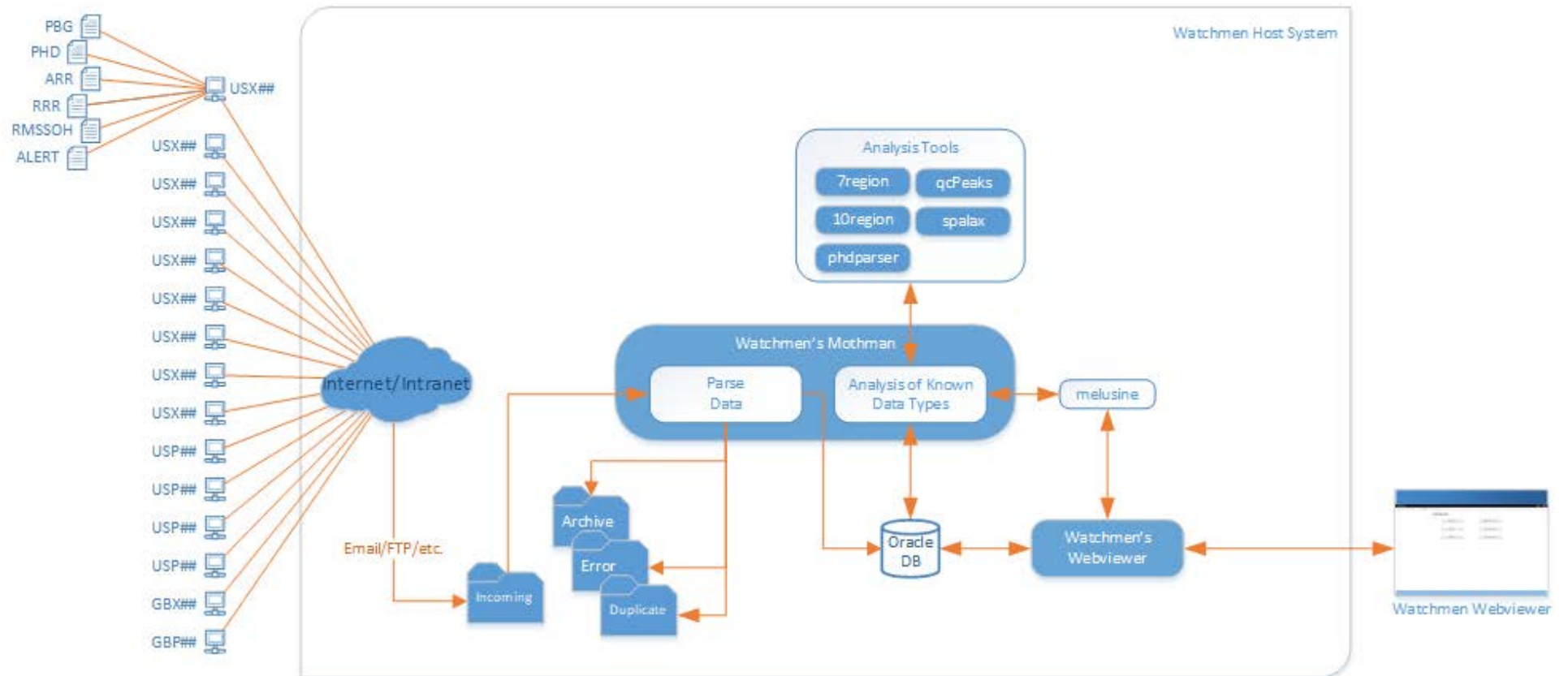


Figure 4 Manager Deploy Dialog Box

3 Block Diagram



4 Other Information

4.1 System Requirements

Web Browser: Chrome, or Firefox

Server:

RedHat Enterprise Linux 6+ or CENTOS 6+ 64bit

Java 8+ (note: Java 8 is not compatible with Apache Tomcat versions prior to 7.0.58)

Apache Tomcat 7/8/9

An Oracle Database

4.2 Known Issues

Chart legends are not printed correctly in Firefox and Internet Explorer (Workaround: Print from Chrome or take a screenshot of the chart)

A graphical glitch sometimes does not show the decimal point when viewing calibration data for a measurement. This is anticipated to be fixed in the Aug 2020 update.

5 Other Contributors Acknowledgement

RE Wilson



Pacific Northwest
NATIONAL LABORATORY

*Proudly Operated by **Battelle** Since 1965*

902 Battelle Boulevard
P.O. Box 999
Richland, WA 99352
1-888-375-PNNL (7665)

U.S. DEPARTMENT OF
ENERGY

www.pnnl.gov