

# An Economic Engine for Washington State

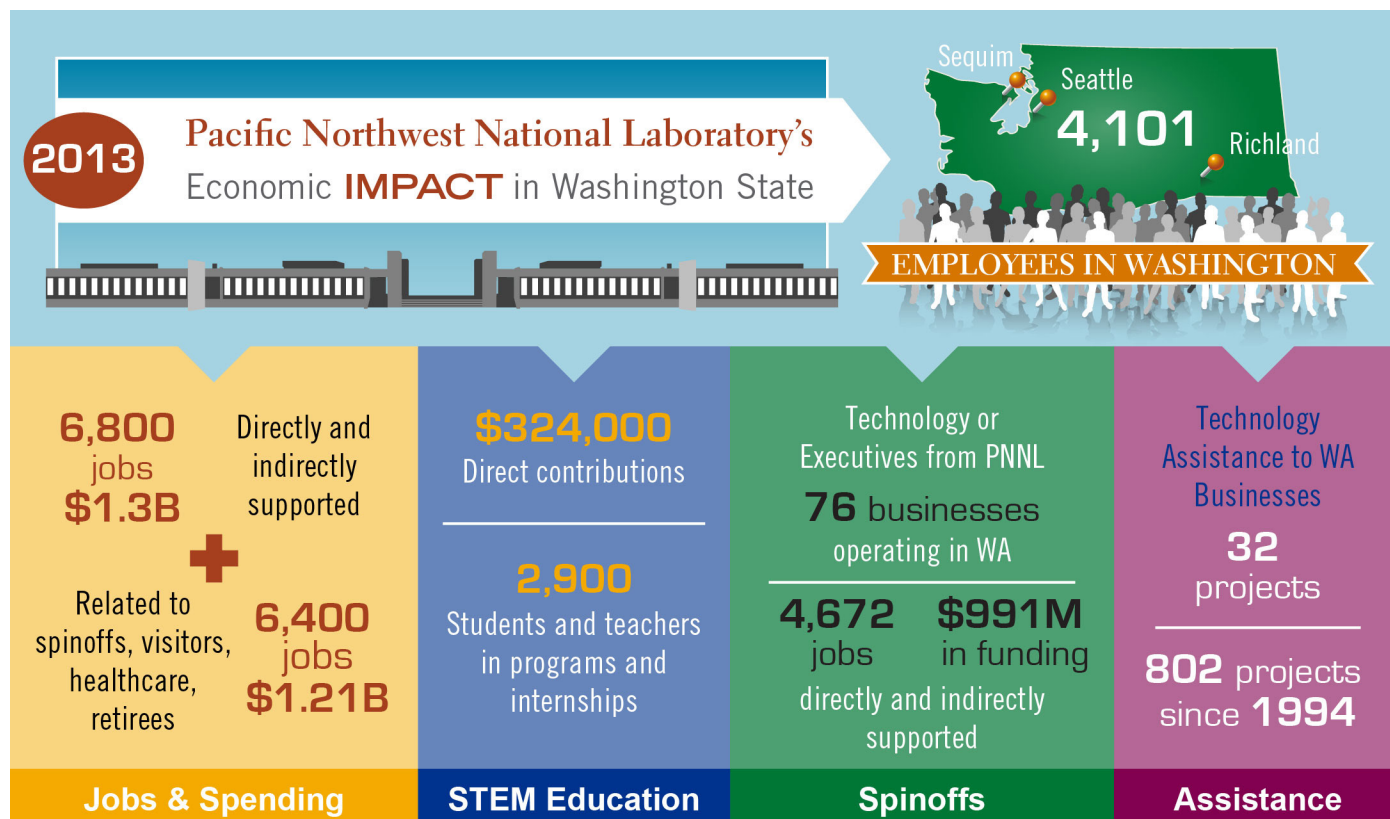
When Washington State leaders share their visions for a vibrant future, certain priorities rise to the top: jobs, education, and an environment that encourages innovation. The Department of Energy's Pacific Northwest National Laboratory contributes in important ways to these priorities.

Of course, PNNL is known for addressing America's most pressing issues in science, energy, the environment, and national security. But PNNL also delivers a less obvious, but significant benefit: economic impact. In Washington State, that impact shows up in funding and spending, jobs, wages, purchased goods and services, healthcare, visitor spending, spinoff companies, education support, and charitable contributions.

## JOB

PNNL is one of the largest scientific research centers in the state. Of PNNL's 4,344 staff, 94 percent reside in Washington State, including Richland, Seattle, and Sequim. The Laboratory directly and indirectly supported more than \$1.3 billion dollars and 6,800 jobs in the Washington State economy in 2013. This includes \$514 million in salaries and wages in the state.

The state also gained more than \$1.21 billion dollars and another 6,400 jobs through closely related economic activities. These include visitor spending, health care spending, spending by resident retirees, and spinoff companies.



## EDUCATION

U.S. businesses need a continuous pipeline of workers prepared for 21st-century challenges. Yet today, more than 23,000 science, technology, engineering, and math, or STEM, jobs go unfilled in Washington State. That's because workers don't have the required skill sets.

Staff at PNNL, and its operator, Battelle, are committed to STEM education in the state's K-12 schools, colleges, and universities. In fact, Battelle contributed \$324,000 specifically for STEM education in 2013.

This commitment to education is not just financial, but hands-on. Every year, hundreds of students and teachers increase their STEM literacy through PNNL's education programs. In addition, PNNL opens its doors to hundreds of college students, graduates, and faculty every year through fellowship and intern programs.

About 2,900 Washington state students and instructors at all levels participated in these education and internship programs in 2013. As a result, they are better equipped to contribute to—and compete in—Washington State's thriving innovation economy.

## INNOVATION FOR BUSINESS GROWTH

Like universities, PNNL “seeds” business growth. Some staff develop technologies that lead to new businesses. Some start their own companies. And hundreds of businesses have used technology assistance from PNNL for more than two decades.

Seventy six companies with technological or managerial roots in PNNL were operating in Washington in 2013. They had an estimated \$570 million of their sales and more than 2,200 employees in the state. Through a multiplier effect, these “roots” companies created an estimated total economic impact of 4,672 jobs and \$991 million in total economic output for Washington.



Proudly Operated by **Battelle** Since 1965



Delta High School, a STEM-focused institution, got started in 2009. Supporting partners included Battelle, PNNL, school districts, the State of Washington, and the Paul Allen Family Foundation.

Not only does PNNL help generate new businesses, but Washington companies are benefitting from federally funded technology and expertise. Researchers from PNNL conducted 32 technology assistance projects for Washington-based businesses in 2013, and a total of more than 800 projects for Washington businesses since 1994.

## ECONOMICALLY VIBRANT FUTURE

Taken all together, these economic contributions in jobs, education, and entrepreneurship tell an impressive story that goes beyond the value of science and technology achievements. It is clear that Washington research institutions like PNNL are a crucial part of the state's economic well-being and key to a vibrant future.

### Contact

**Pamela Hughes, Senior Advisor**

Office of Institutional Strategy, Science  
and Technology

Pacific Northwest National Laboratory  
Richland, WA

509.375.2619 | [pamela.hughes@pnnl.gov](mailto:pamela.hughes@pnnl.gov)

More information: “Economic Impact of Pacific Northwest National Laboratory on the State of Washington in Fiscal Year 2013,” <http://1.usa.gov/1w3TAMu>.